

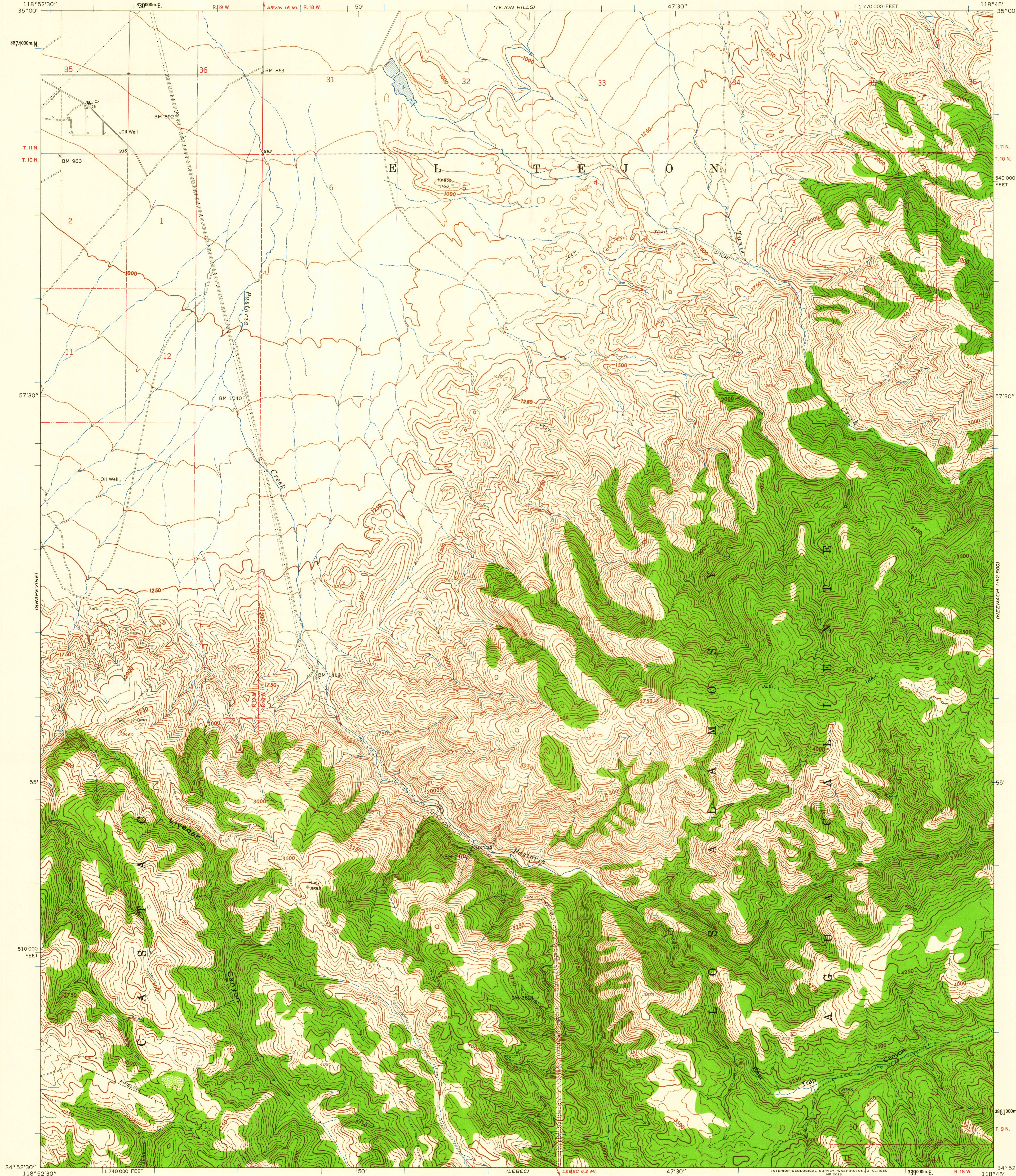
(METTER)

UNITED STATES
DEPARTMENT OF THE INTERIOR
GEOLOGICAL SURVEY

UNITED STATES
DEPARTMENT OF THE ARMY
CORPS OF ENGINEERS

PASTORIA CREEK QUADRANGLE
CALIFORNIA-KERN CO.
7.5 MINUTE SERIES (TOPOGRAPHIC)

(CUMMINGS MTN.)
1:62,500



(FRAZIER MTN.)

Mapped by the Army Map Service
Edited and published by the Geological Survey
Control by USC&GS and U. S. Forest Service
Topography from aerial photographs by photogrammetric methods
Aerial photographs taken 1942. Field check 1943
Revised by the Geological Survey 1958
Polyconic projection. 1927 North American datum
10,000-foot grid based on California coordinate system, zone 5
1000-meter Universal Transverse Mercator grid ticks,
zone 11, shown in blue
Dashed land lines indicate approximate locations
Dotted land lines were established by private survey
Unchecked elevations are shown in brown

TRUE NORTH
MAGNETIC NORTH
APPROXIMATE MEAN
DECLINATION, 1958

SCALE 1:24,000
1 0 1000 2000 3000 4000 5000 6000 7000 FEET
1 0 5 10 KILOMETER
CONTOUR INTERVAL 50 FEET
DATUM IS MEAN SEA LEVEL

USGS
Historical File
Topographic Division



ROAD CLASSIFICATION
Light-duty Unimproved dirt

U.S.G.S.
FILE COPY
TOPOGRAPHIC DIVISION

PASTORIA CREEK, CALIF.
N3452.5-W11845/7.5
1958

APR 20 1960

3055

FOR SALE BY U. S. GEOLOGICAL SURVEY, DENVER 25, COLORADO OR WASHINGTON 25, D. C.
A FOLDER DESCRIBING TOPOGRAPHIC MAPS AND SYMBOLS IS AVAILABLE ON REQUEST