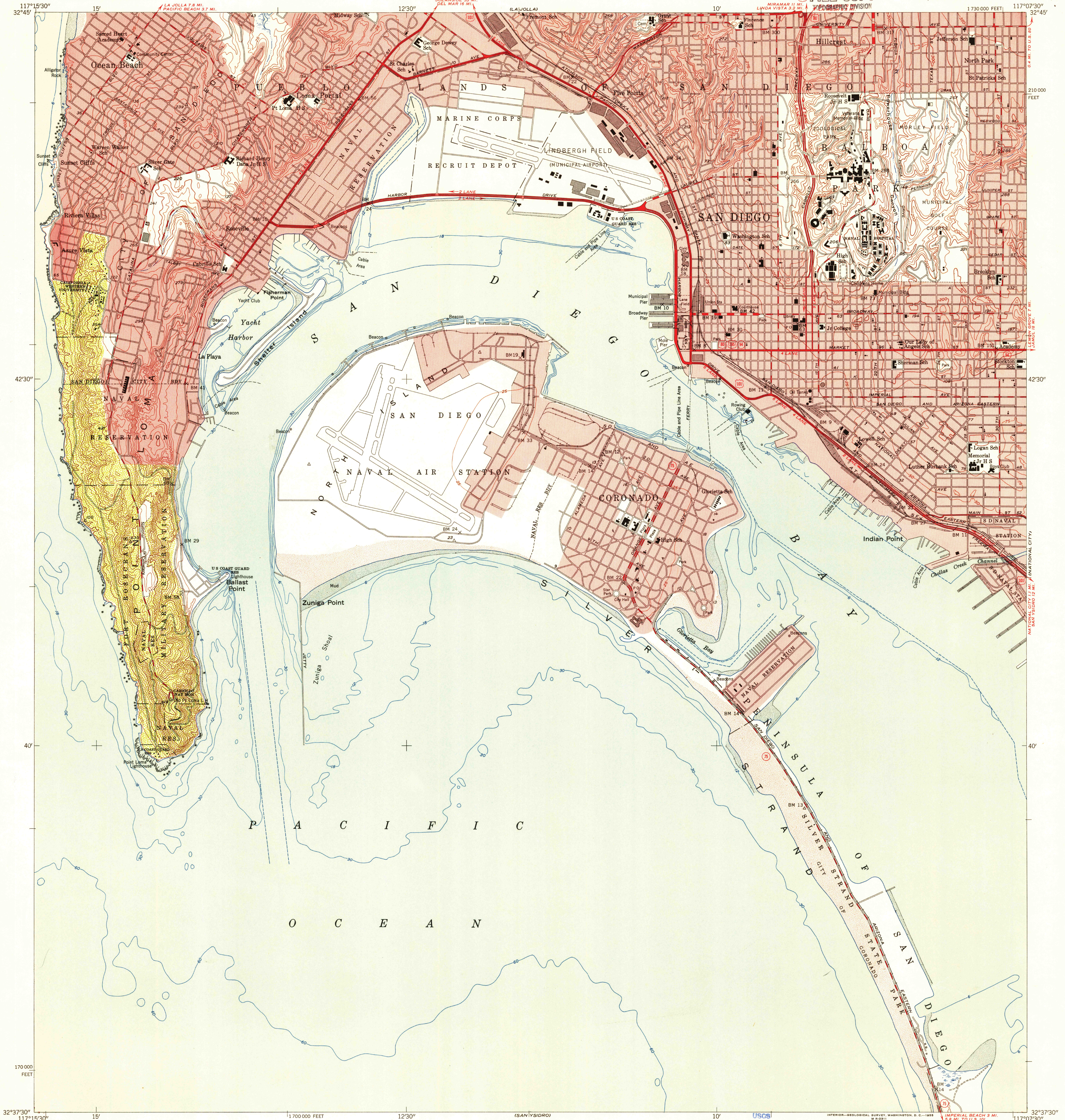


UNITED STATES
DEPARTMENT OF THE INTERIOR
GEOLOGICAL SURVEY

U.S.G.S.
FILE COPY
TOPOGRAPHIC DIVISION

POINT LOMA QUADRANGLE
CALIFORNIA—SAN DIEGO CO.
7.5 MINUTE SERIES (TOPOGRAPHIC)
NW 1/4 SAN DIEGO 15' QUADRANGLE



Mapped, edited, and published by the Geological Survey
Control by USGS and USC&GS
Topography by plane-table surveys 1938-1939
Culture and drainage revised from aerial photographs
taken 1950. Contour revision and field check 1953
Hydrography compiled from USC&GS Charts 5105 and 5107
Polyconic projection. 1927 North American datum
10,000-foot grid based on California coordinate system, zone 6
Red tint indicates areas in which only landmark buildings are shown
Land grant boundaries which follow the
shoreline are not shown

15°
TRUE NORTH
MAGNETIC NORTH
APPROXIMATE MEAN
DECLINATION, 1953

SCALE 1:24,000
1 0 1000 2000 3000 4000 5000 6000 7000 FEET
1 0 5 10 KILOMETER
CONTOUR INTERVAL 25 FEET
DATUM IS MEAN SEA LEVEL
DEPTH CURVES IN FEET—DATUM IS MEAN LOWER LOW WATER
SHORELINE SHOWN REPRESENTS THE APPROXIMATE LINE OF MEAN HIGH WATER
THE AVERAGE RANGE OF TIDE IS APPROXIMATELY 4 FEET

USGS
Historical File
Topographic Division
QUADRANGLE LOCATION

ROAD CLASSIFICATION
Heavy-duty ——— Light-duty ———
Medium-duty ——— Unimproved dirt ———
U. S. Route ——— State Route ———

U.S.G.S.
FILE COPY
TOPOGRAPHIC DIVISION

POINT LOMA, CALIF.
NW 1/4 SAN DIEGO 15' QUADRANGLE
N 23° 37' 30" W 117° 07' 30" 5/7.5 x 8

FOR SALE BY U. S. GEOLOGICAL SURVEY, FEDERAL CENTER, DENVER, COLORADO OR WASHINGTON 25, D. C.
A FOLDER DESCRIBING TOPOGRAPHIC MAPS AND SYMBOLS IS AVAILABLE ON REQUEST

NOV 8 1953