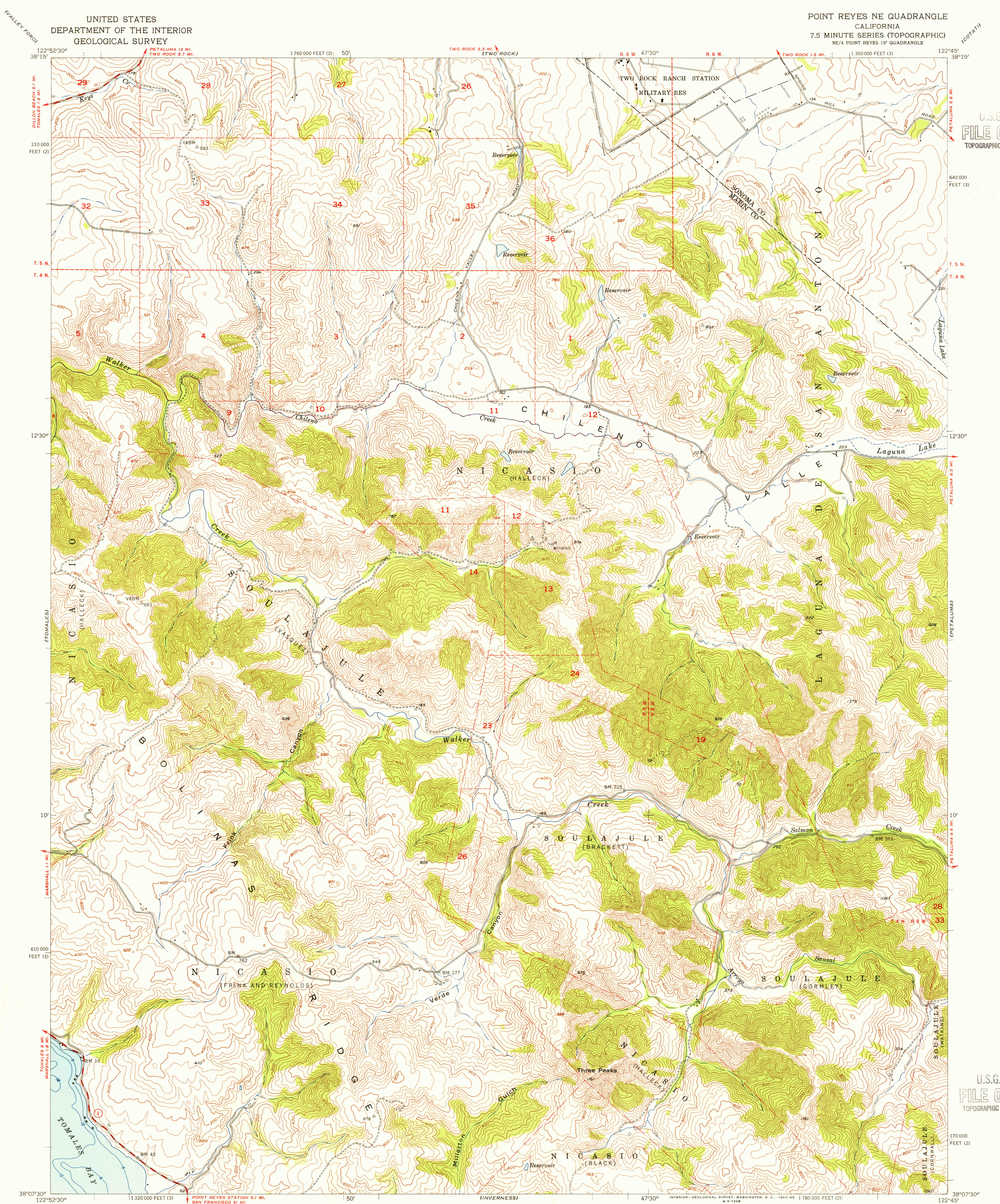


UNITED STATES  
DEPARTMENT OF THE INTERIOR  
GEOLOGICAL SURVEY

POINT REYES NE QUADRANGLE  
CALIFORNIA  
7.5 MINUTE SERIES (TOPOGRAPHIC)  
NE/4 POINT REYES 15' QUADRANGLE

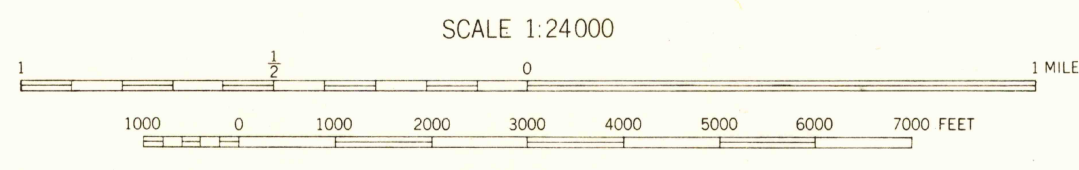
U.S.G.S.  
FILE COPY  
TOPOGRAPHIC DIVISION

U.S.G.S.  
FILE COPY  
TOPOGRAPHIC DIVISION



Mapped, edited, and published by the Geological Survey  
Control by USGS, USC&GS, and USCE  
Topography from aerial photographs by multiplex methods  
Aerial photographs taken 1952. Field check 1954  
Polyconic projection. 1927 North American datum  
10,000-foot grids based on California coordinate system, zones 2 and 3  
Hydrography compiled from USC&GS Chart 5603  
Dashed land lines indicate approximate locations  
Unchecked elevations are shown in brown

TRUE NORTH  
MAGNETIC NORTH  
APPROXIMATE MEAN  
DECLINATION, 1954



CONTOUR INTERVAL 40 FEET  
DATUM IS MEAN SEA LEVEL  
DEPTH CURVES IN FEET—DATUM IS MEAN LOWER LOW WATER  
SHORELINE SHOWN REPRESENTS THE APPROXIMATE LINE OF MEAN HIGH WATER  
THE AVERAGE RANGE OF TIDE IS APPROXIMATELY 4 FEET  
THIS MAP COMPLIES WITH NATIONAL MAP ACCURACY STANDARDS  
FOR SALE BY U. S. GEOLOGICAL SURVEY, FEDERAL CENTER, DENVER, COLORADO OR WASHINGTON 25, D. C.  
A FOLDER DESCRIBING TOPOGRAPHIC MAPS AND SYMBOLS IS AVAILABLE ON REQUEST

ROAD CLASSIFICATION  
Heavy-duty ——— Light-duty ———  
Medium-duty ——— Unimproved dirt ———  
U. S. Route ——— State Route ———  
QUADRANGLE LOCATION  
POINT REYES NE, CALIF.  
NE/4 POINT REYES 15' QUADRANGLE  
N 3807.5 — W 12245.75  
1954  
JUL 15 1955