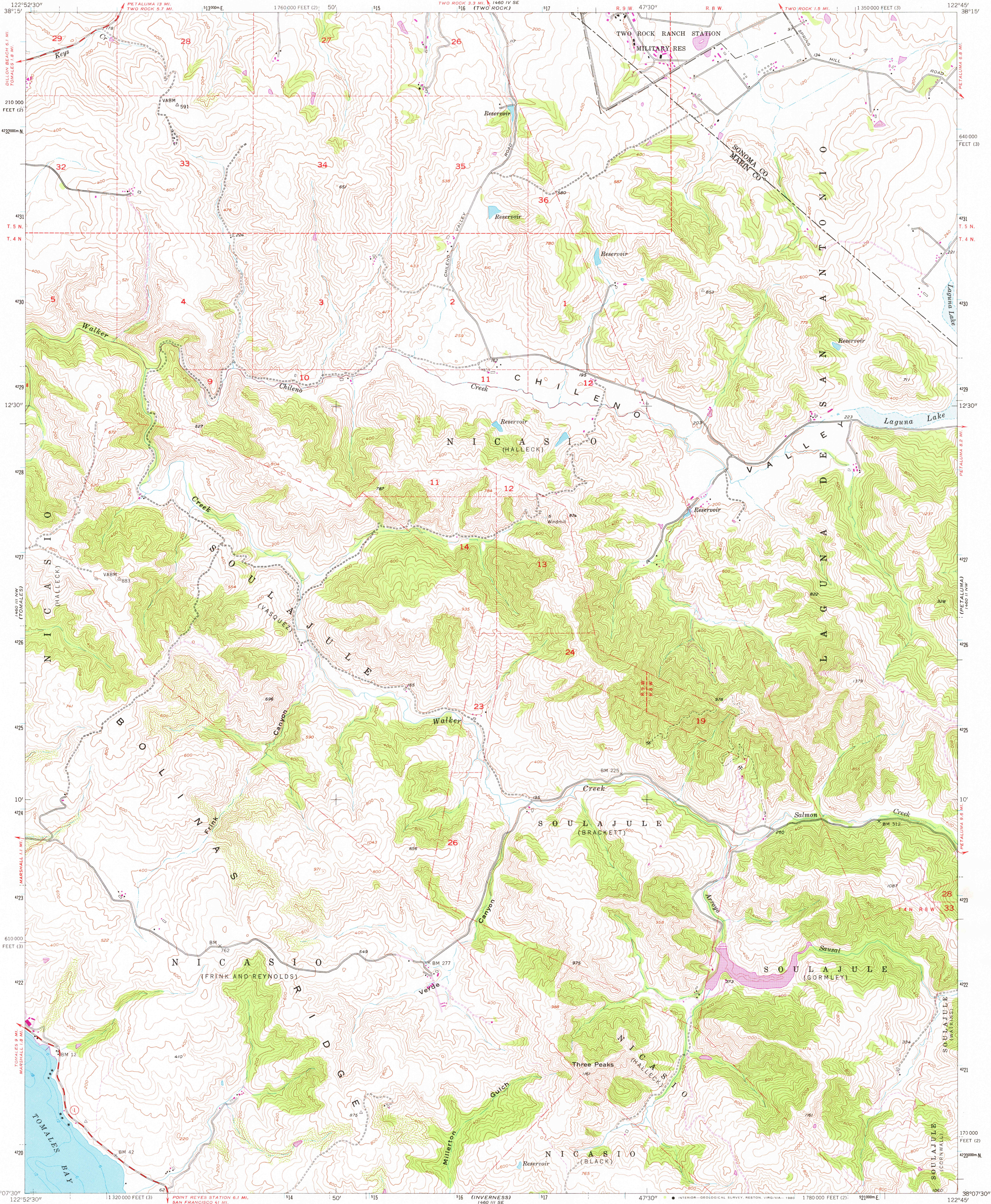


UNITED STATES
DEPARTMENT OF THE INTERIOR
GEOLOGICAL SURVEY

POINT REYES NE QUADRANGLE
CALIFORNIA
7.5 MINUTE SERIES (TOPOGRAPHIC)
NE/4 POINT REYES 15' QUADRANGLE



Maped, edited, and published by the Geological Survey

Control by USGS, USC&GS, and USCE

Topography from aerial photographs by multiplex methods
Aerial photographs taken 1952. Field check 1954

Polyconic projection. 1927 North American datum
10,000-foot grids based on California coordinate system, zones 2 and 3

Hydrography compiled from USC&GS Chart 5603

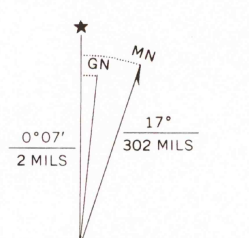
1000-meter Universal Transverse Mercator grid ticks,
zone 10, shown in blue

To place on the predicted North American Datum 1983
move the projection lines 16 meters north and
96 meters east as shown by dashed corner ticks

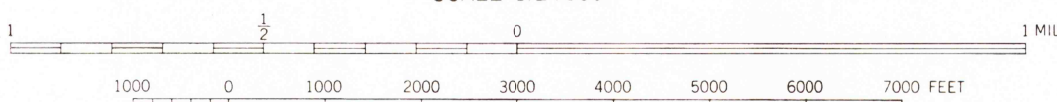
There may be private inholdings within the boundaries of
the National or State reservations shown on this map

Revisions shown in purple compiled from aerial photographs
taken 1971 and other source data. This information not
field checked.

UTM GRID AND 1971 MAGNETIC NORTH
DECLINATION AT CENTER OF SHEET



SCALE 1:24,000



CONTOUR INTERVAL 40 FEET
NATIONAL GEODETIC VERTICAL DATUM OF 1929
DEPTH CURVES IN FEET—DATUM IS MEAN LOWER LOW WATER
THE RELATIONSHIP BETWEEN THE TWO DATUMS IS VARIABLE
THE AVERAGE RANGE OF TIDE IS APPROXIMATELY 4 FEET

THIS MAP COMPLIES WITH NATIONAL MAP ACCURACY STANDARDS
FOR SALE BY U. S. GEOLOGICAL SURVEY, DENVER, COLORADO 80225, OR RESTON, VIRGINIA 22092
A FOLDER DESCRIBING TOPOGRAPHIC MAPS AND SYMBOLS IS AVAILABLE ON REQUEST

ROAD CLASSIFICATION



QUADRANGLE LOCATION
Map photoinspected 1976
No major culture or drainage changes observed

POINT REYES NE, CALIF. MAR 12 1981
NE/4 POINT REYES 15' QUADRANGLE
N 3807.5—W 12245/7.5
PHOTOINSPECTED 1976
1954
PHOTOREVISED 1971
DMA 1460 III NE—SERIES V895

1600