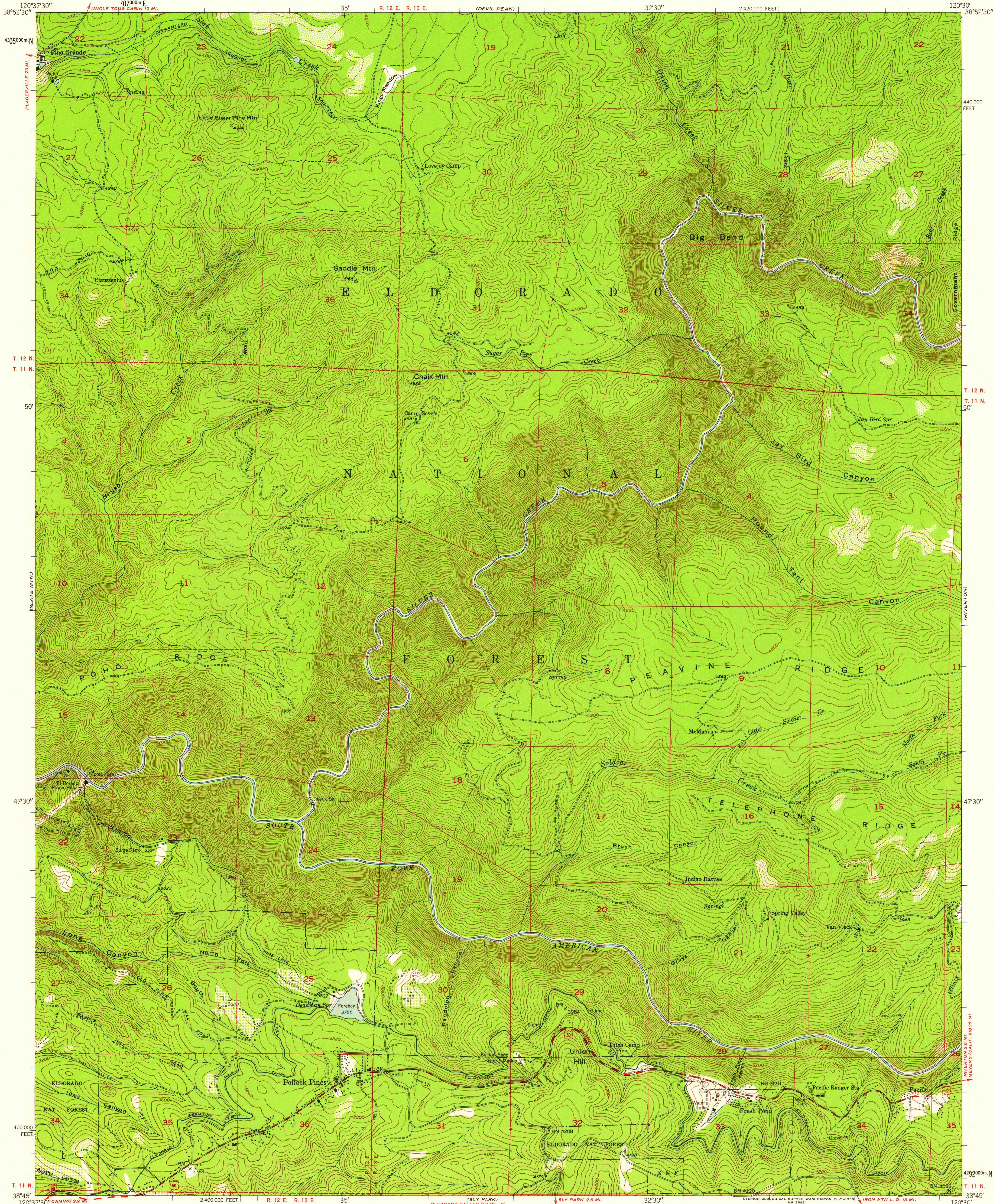


UNITED STATES
DEPARTMENT OF THE INTERIOR
GEOLOGICAL SURVEY

POLLOCK PINES QUADRANGLE
CALIFORNIA-EL DORADO CO
7.5 MINUTE SERIES (TOPOGRAPHIC)



Maped, edited, and published by the Geological Survey
Control by USGS and USC&GS

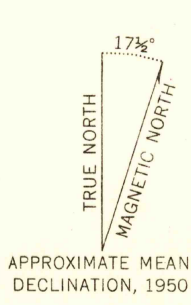
Topography from aerial photographs by multiplex methods
Aerial photographs taken 1948. Field check 1950

Polyconic projection. 1927 North American datum
10,000-foot grid based on California coordinate system,
zone 2

Dashed land lines indicate approximate location

Unchecked elevations are shown in brown

1000-meter Universal Transverse Mercator grid ticks,
zone 10, shown in blue



APPROXIMATE MEAN
DECLINATION, 1950

SCALE 1:24,000

1 0 1000 2000 3000 4000 5000 6000 7000 FEET

1 0 5 10 KILOMETER

CONTOUR INTERVAL 40 FEET
DATUM IS MEAN SEA LEVEL

THIS MAP COMPLIES WITH NATIONAL MAP ACCURACY STANDARDS
FOR SALE BY U. S. GEOLOGICAL SURVEY, DENVER 2, COLORADO OR WASHINGTON 25, D. C.
A FOLDER DESCRIBING TOPOGRAPHIC MAPS AND SYMBOLS IS AVAILABLE ON REQUEST

USGS
Historical File
Topographic Division

ROAD CLASSIFICATION
Heavy duty 4 LANE 16 LANE Light-duty
Medium duty 4 LANE 16 LANE Unimproved dirt
U. S. Route State Route

U.S.G.S.
FILE COPY
TOPOGRAPHIC DIVISION

POLLOCK PINES, CALIF.
N3845-W12030/7.5

1950

JUN 10 1958

2425