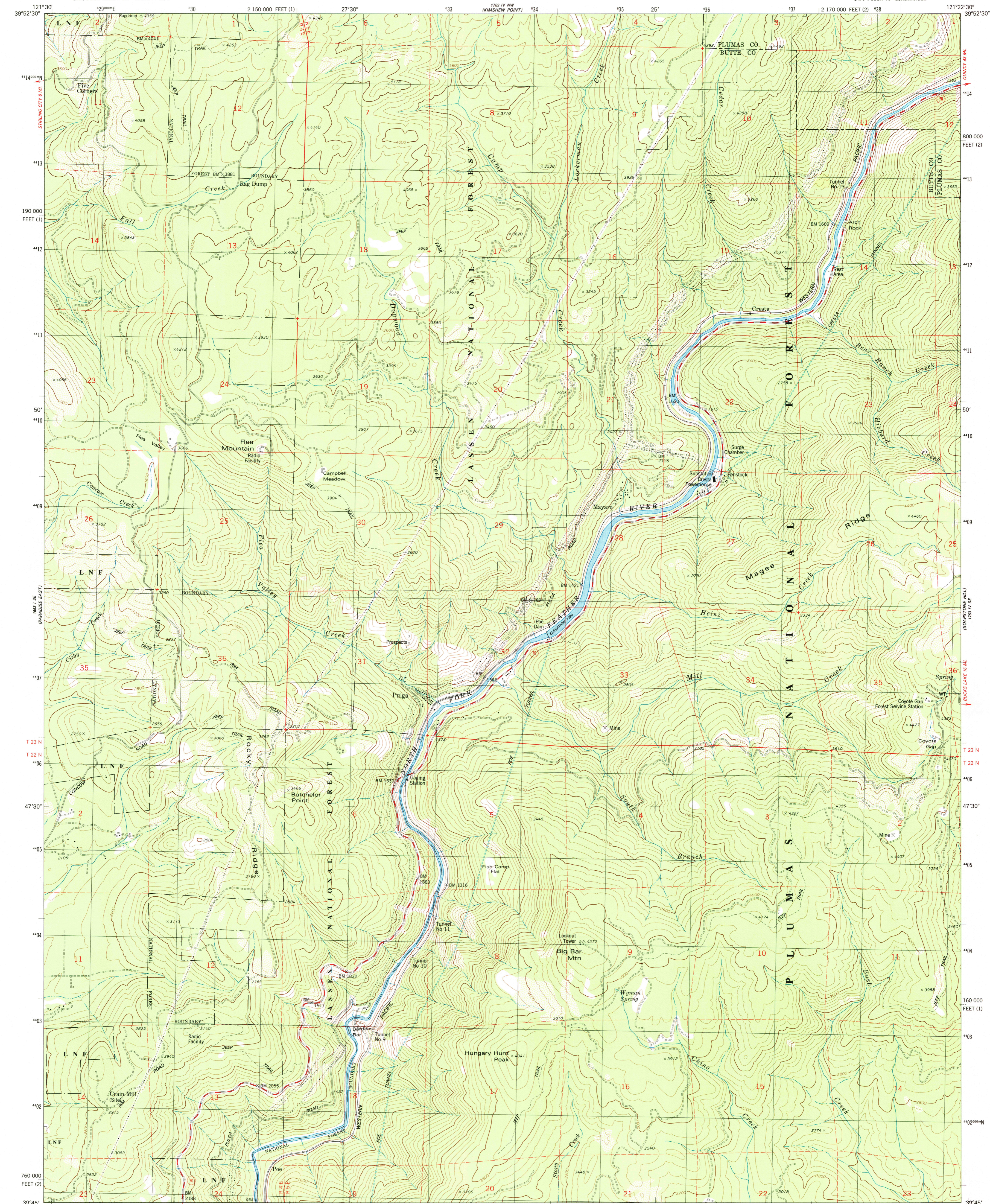
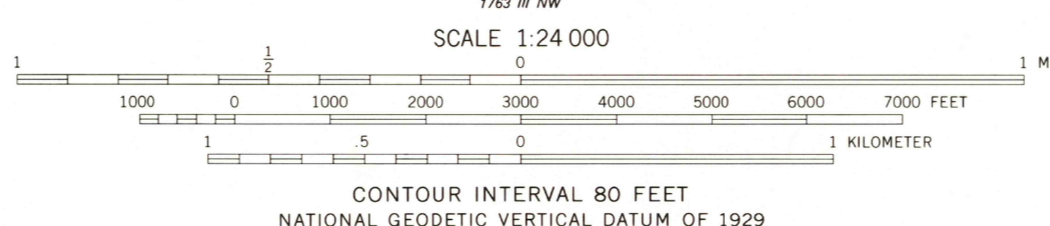
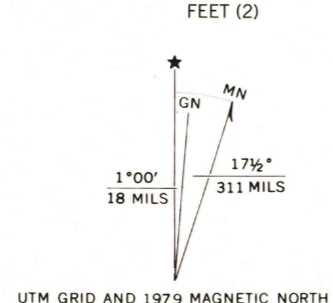


UNITED STATES
DEPARTMENT OF THE INTERIOR
GEOLOGICAL SURVEY

PULGA QUADRANGLE
CALIFORNIA
7.5 MINUTE SERIES (TOPOGRAPHIC)
SW/4 PULGA 15' QUADRANGLE



Mapped, edited, and published by the Geological Survey
Control by USGS and NOS/NOAA
Topography by photogrammetric methods from aerial
photographs taken 1973. Field checked 1974. Map edited 1979
Projection: California coordinate system, zone 2
(Lambert conformal conic)
10,000-foot grid ticks based on California coordinate
system, zones 2 and 1
1000-meter Universal Transverse Mercator grid, zone 10
1927 North American datum
To place on the predicted North American Datum 1983
move the projection lines 16 meters north and
91 meters east as shown by dashed corner ticks
There may be private inholdings within the boundaries of
the National or State reservations shown on this map



ROAD CLASSIFICATION
Primary highway, hard surface
Secondary highway, hard surface
Unimproved road
Interstate Route
U. S. Route
State Route
Light-duty road, hard or improved surface
Unimproved road

PULGA, CALIF.
SW/4 PULGA 15' QUADRANGLE
N3945-W12122.5/7.5

1979
DMA 1763 IV SW-SERIES Y895

REC'D FILE COPY
MAR 1 1989
U.S. GEOLOGICAL SURVEY