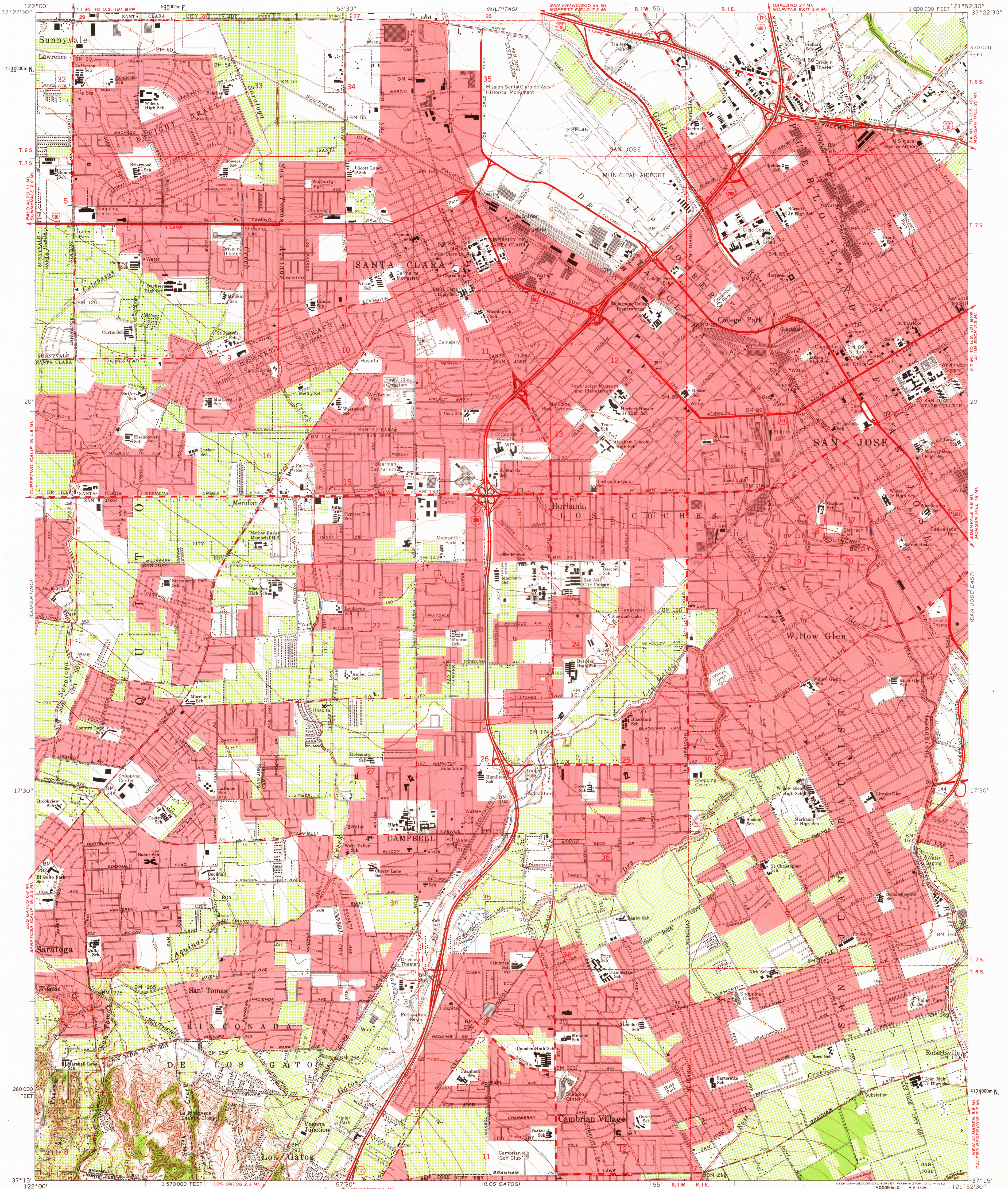


UNITED STATES
DEPARTMENT OF THE INTERIOR
GEOLOGICAL SURVEY

SAN JOSE WEST QUADRANGLE
CALIFORNIA-SANTA CLARA CO.
7.5 MINUTE SERIES (TOPOGRAPHIC)
SW/4 SAN JOSE 15' QUADRANGLE



Maped, edited, and published by the Geological Survey
with cooperation by the California Department of Water Resources
Control by USGS, USC&GS, and USCE

Topography from aerial photographs by photogrammetric methods
and by planetable surveys 1953. Aerial photographs taken 1948
Revised from aerial photographs and by planetable surveys 1961
Aerial photographs taken 1960

Polyconic projection. 1927 North American datum
10,000-foot grid based on California coordinate system, zone 3
1000-meter Universal Transverse Mercator grid ticks,
zone 10, shown in blue

Red tint indicates areas in which only landmark buildings are shown

Dashed land lines indicate approximate locations

The north two-thirds of this map lies within a subsidence area

TRUE NORTH
MAGNETIC NORTH
APPROXIMATE MEAN
DECLINATION, 1961

THIS MAP COMPLIES WITH NATIONAL MAP ACCURACY STANDARDS
FOR SALE BY U.S. GEOLOGICAL SURVEY, DENVER 25, COLORADO OR WASHINGTON 25, D. C.
A FOLDER DESCRIBING TOPOGRAPHIC MAPS AND SYMBOLS IS AVAILABLE ON REQUEST

USGS
Historical Files
Topographic Division



QUADRANGLE LOCATION

ROAD CLASSIFICATION
Heavy-duty ——— Light-duty ———
Medium-duty ——— Unimproved dirt ———
Interstate Route U.S. Route State Route

SAN JOSE WEST, CALIF.
SW/4 SAN JOSE 15' QUADRANGLE
N3715-W12152.5/7.5

1961

4120