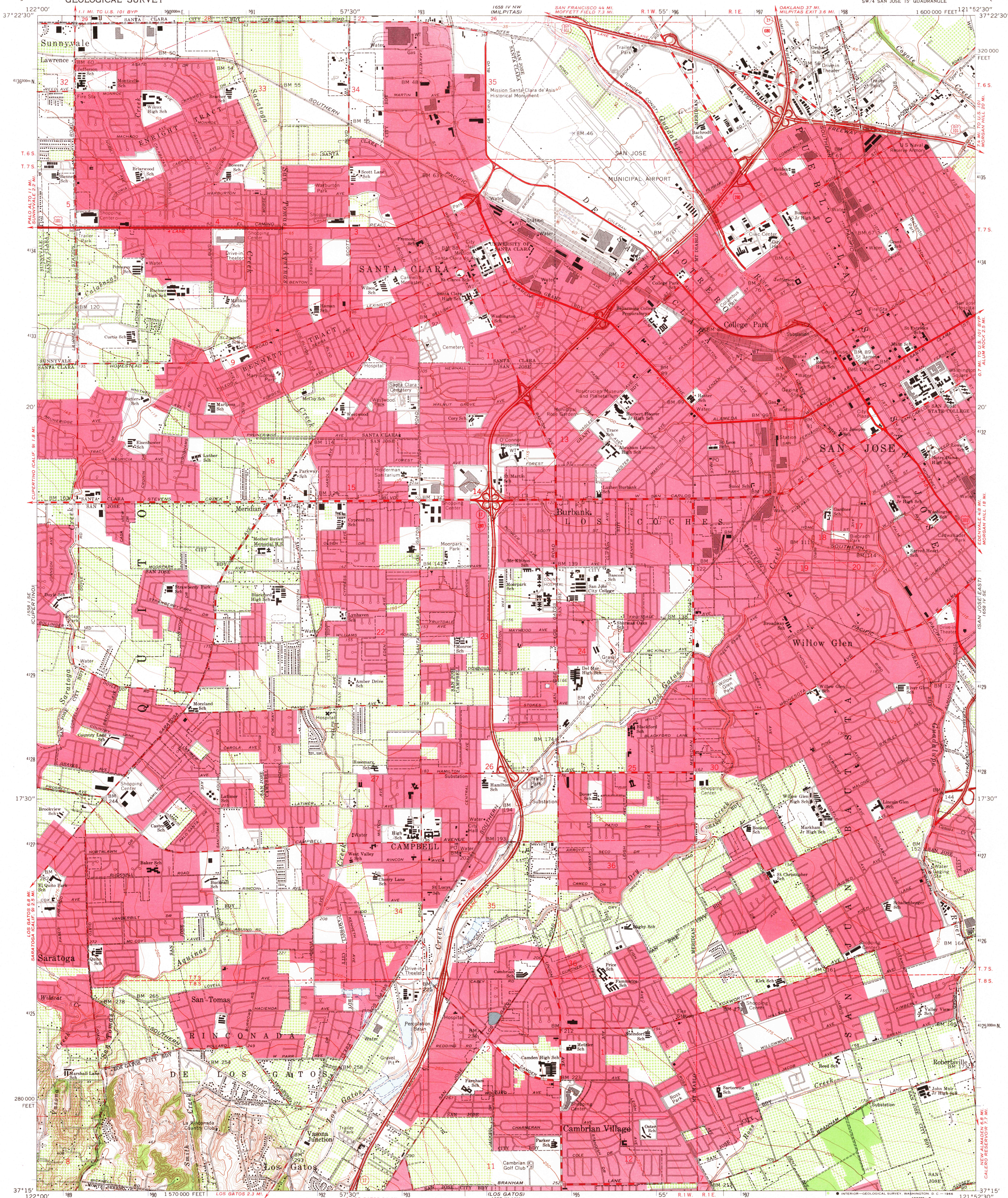


1559 NE VIEW
MOUNTAIN VIEW

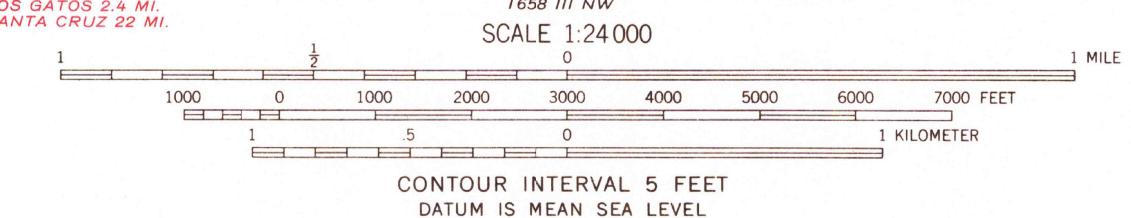
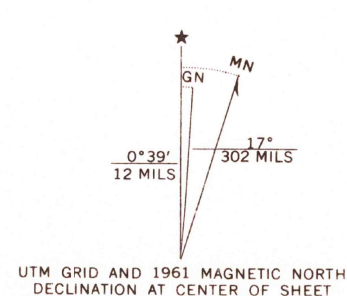
UNITED STATES
DEPARTMENT OF THE INTERIOR
GEOLOGICAL SURVEY

SAN JOSE WEST QUADRANGLE
CALIFORNIA—SANTA CLARA CO.
7.5 MINUTE SERIES (TOPOGRAPHIC)
SW/4 SAN JOSE 15' QUADRANGLE

1559 SE VIEW
MOUNTAIN VIEW



Mapped, edited, and published by the Geological Survey
with cooperation by the California Department of Water Resources
Control by USGS, USC&GS, and USCE
Topography from aerial photographs by photogrammetric methods
and by planetable surveys 1953. Aerial photographs taken 1948
Revised from aerial photographs and by planetable surveys 1961
Aerial photographs taken 1960
Polyconic projection. 1927 North American datum
10,000-foot grid based on California coordinate system, zone 3
1000-meter Universal Transverse Mercator grid ticks,
zone 10, shown in blue
Red tint indicates areas in which only landmark buildings are shown
Dashed land lines indicate approximate locations
The north two-thirds of this map lies within a subsidence area



USGS
Historical File
Topographic Division



QUADRANGLE LOCATION

ROAD CLASSIFICATION
Heavy-duty — Light-duty —
Medium-duty — Unimproved dirt —
Interstate Route — U.S. Route — State Route

U.S.G.S.
FILE COPY
TOPOGRAPHIC DIVISION

SAN JOSE WEST, CALIF.
SW/4 SAN JOSE 15' QUADRANGLE
N3715—W12152.5/7.5

1961
AMS 1658 IV SW—SERIES V895

11 665