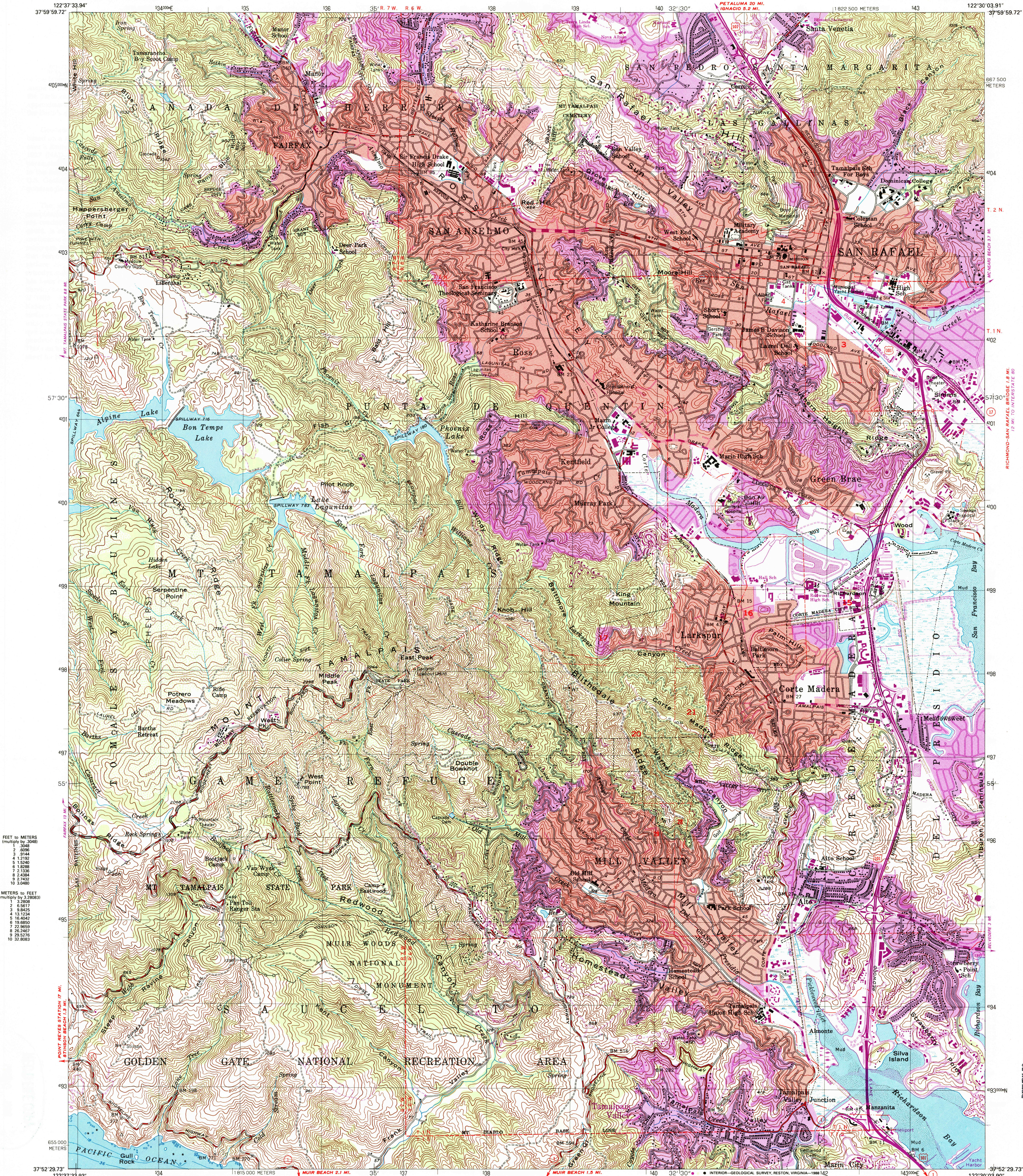


DEPARTMENT OF THE INTERIOR
UNITED STATES GEOLOGICAL SURVEY

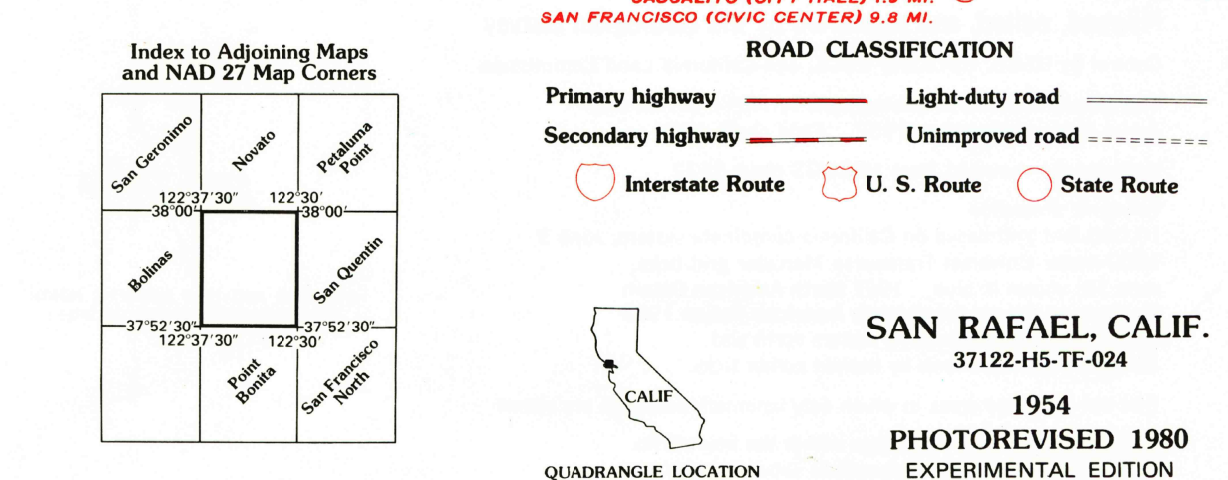
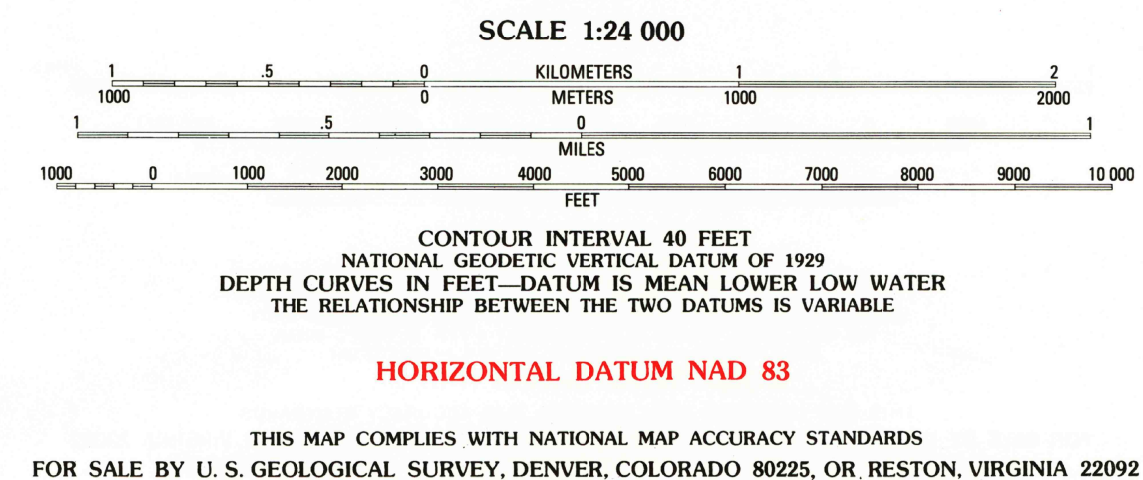
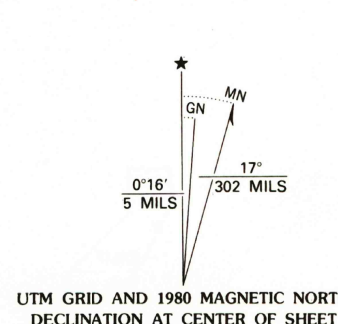
SAN RAFAEL QUADRANGLE
CALIFORNIA—MARIN CO.
7.5 MINUTE SERIES (TOPOGRAPHIC)



FEET TO METERS
(multiply by 0.3048)
1 3048
2 6096
3 9144
4 12192
5 15240
6 18288
7 21336
8 24384
9 27432
10 30480

METERS TO FEET
(multiply by 3.28083)
1 3.2808
2 6.5617
3 9.8425
4 13.1234
5 16.4042
6 19.6850
7 22.9659
8 26.2467
9 29.5276
10 32.8083

Produced by the United States Geological Survey
Control by USGS, NOS/NOAA, and California Land Commission. Topography by photogrammetric methods from aerial photographs taken 1952. Field check 1954. Hydrography compiled from NOS chart 5532. Shoreline shown represents the approximate line of mean high water. The mean range of tide is approximately 4 feet in Pacific Ocean and 5 feet in Richardson Bay and San Francisco Bay.
Projection and 1000-meter grid: Universal Transverse Mercator, zone 10. 2,500-meter grid based on California Coordinate System of 1983, zone 3. North American Datum 1983.
Projection and grids scaled to the corners of the existing map prepared on NAD 27. The average difference in position of the graticule between NAD 27 and NAD 83 is 8.13 meters in latitude and 96.06 meters in longitude. Their relationship may be determined by comparing the geographic values as shown for NAD 83 and as shown for NAD 27 in the index to adjoining maps diagram.
There may be private inholdings within the boundaries of the National or State reservations shown on this map.
Revisions shown in purple and woodland compiled from aerial photographs taken 1979 and other sources. This information not held checked. Map edited 1980.
Red tint indicates areas in which only landmark buildings are shown. Purple tint indicates extension of urban areas.



RETURN TO:
USGS AND HISTORICAL MAP ARCHIVES