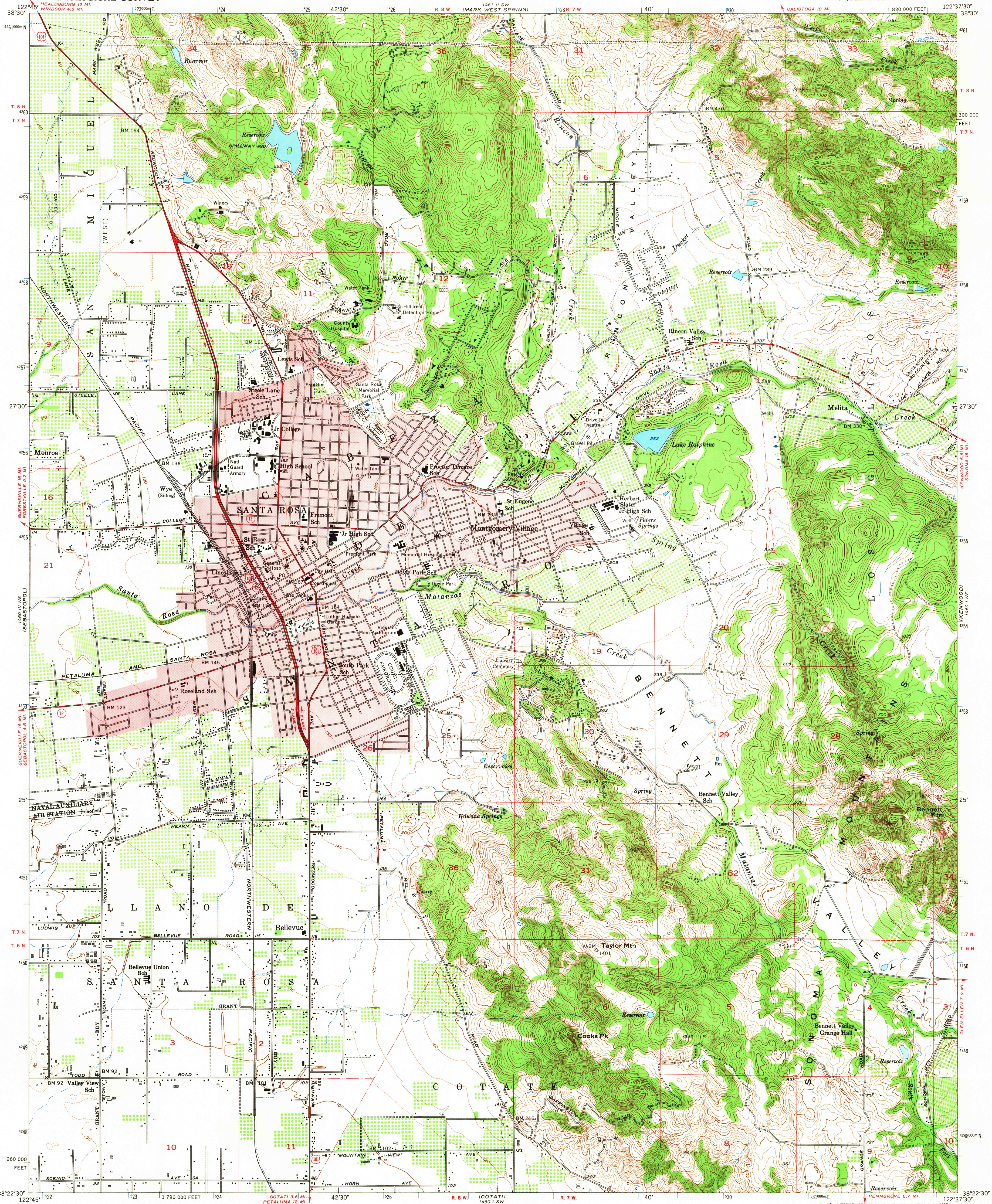


UNITED STATES  
DEPARTMENT OF THE INTERIOR  
GEOLOGICAL SURVEY

SANTA ROSA QUADRANGLE  
CALIFORNIA—SONOMA CO.  
7.5 MINUTE SERIES (TOPOGRAPHIC)  
NW/4 SANTA ROSA 15' QUADRANGLE



Maped, edited, and published by the Geological Survey

Control by USGS and USC&GS

Topography from aerial photographs by Kelsh plotter methods and by plane-table surveys 1954. Aerial photographs taken 1952

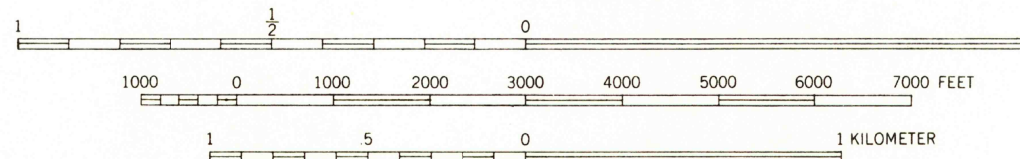
Polyconic projection. 1927 North American datum  
10,000-foot grid based on California coordinate system, zone 2

Red tint indicates areas in which only landmark buildings are shown

Dashed land lines indicate approximate locations

1000-meter Universal Transverse Mercator grid ticks,  
zone 10, shown in blue

SCALE 1:24,000



CONTOUR INTERVAL 20 FEET  
DASHED LINES REPRESENT HALF INTERVAL CONTOURS  
DATUM IS MEAN SEA LEVEL

USGS  
Historical File  
Topographic Division

ROAD CLASSIFICATION  
Heavy-duty ——— Light-duty ———  
Medium-duty ——— Unimproved dirt ———  
U. S. Route ——— State Route ———



QUADRANGLE LOCATION

U.S.G.S.  
FILE COPY  
TOPOGRAPHIC DIVISION

SANTA ROSA, CALIF.  
NW/4 SANTA ROSA 15' QUADRANGLE  
N3822.5-W12237.5/7.5

1954

AMS 1460 1 NW—SERIES V895