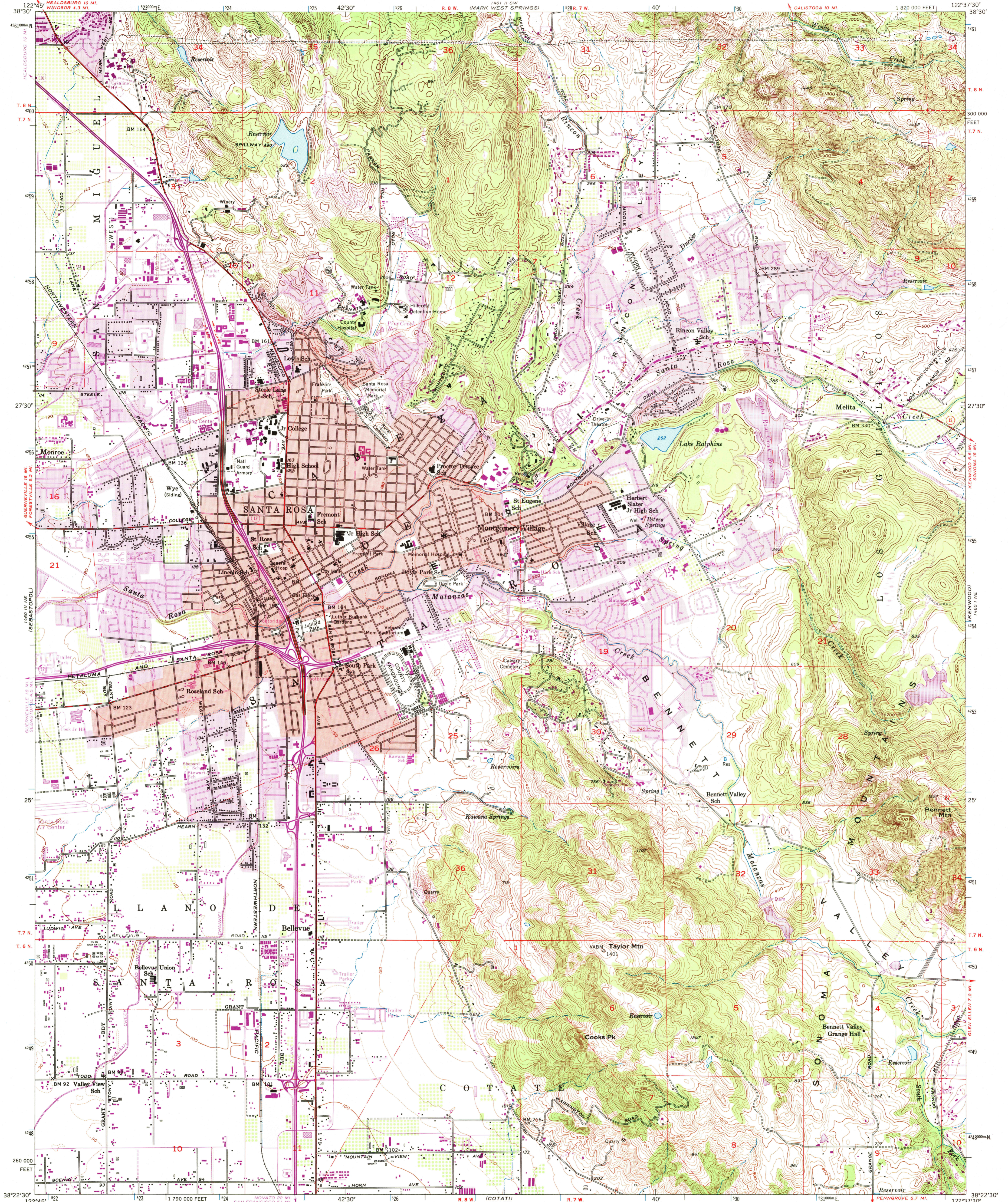
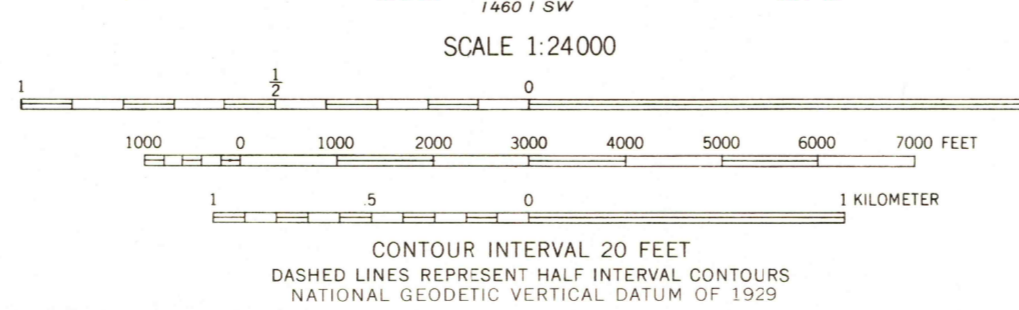
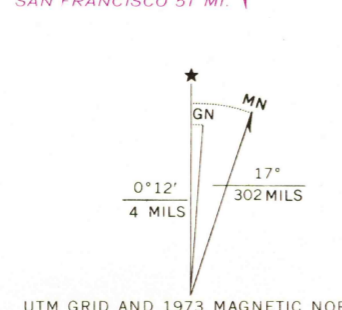


UNITED STATES
DEPARTMENT OF THE INTERIOR
GEOLOGICAL SURVEY

SANTA ROSA QUADRANGLE
CALIFORNIA—SONOMA CO.
7.5 MINUTE SERIES (TOPOGRAPHIC)
NW 1/4 SANTA ROSA 15' QUADRANGLE



Mapped, edited, and published by the Geological Survey
Control by USGS and USC&GS
Topography from aerial photographs by Kelsh plotter methods
and by plane-table surveys 1954. Aerial photographs taken 1952
Polyconic projection, 1927 North American datum
10,000-foot grid based on California coordinate system, zone 2
Red tint indicates areas in which only landmark buildings are shown
Dashed land lines indicate approximate locations
1000-meter Universal Transverse Mercator grid ticks,
zone 10, shown in blue
Revisions shown in purple compiled from aerial photographs
taken 1968 and 1973. This information not field checked
Purple tint indicates extension of urban areas



ROAD CLASSIFICATION

Heavy-duty	Light-duty
Medium-duty	Unimproved dirt
U. S. Route	State Route

QUADRANGLE LOCATION

SANTA ROSA, CALIF.
NW 1/4 SANTA ROSA 15' QUADRANGLE
N3822.5-W12237.5/7.5

1954
PHOTOREVISED 1968 AND 1973
AMS 1460 1 NW-SERIES V895

JUN 06 1975

THIS MAP COMPLIES WITH NATIONAL MAP ACCURACY STANDARDS
FOR SALE BY U. S. GEOLOGICAL SURVEY, DENVER, COLORADO 80225, OR RESTON, VIRGINIA 22092
A FOLDER DESCRIBING TOPOGRAPHIC MAPS AND SYMBOLS IS AVAILABLE ON REQUEST