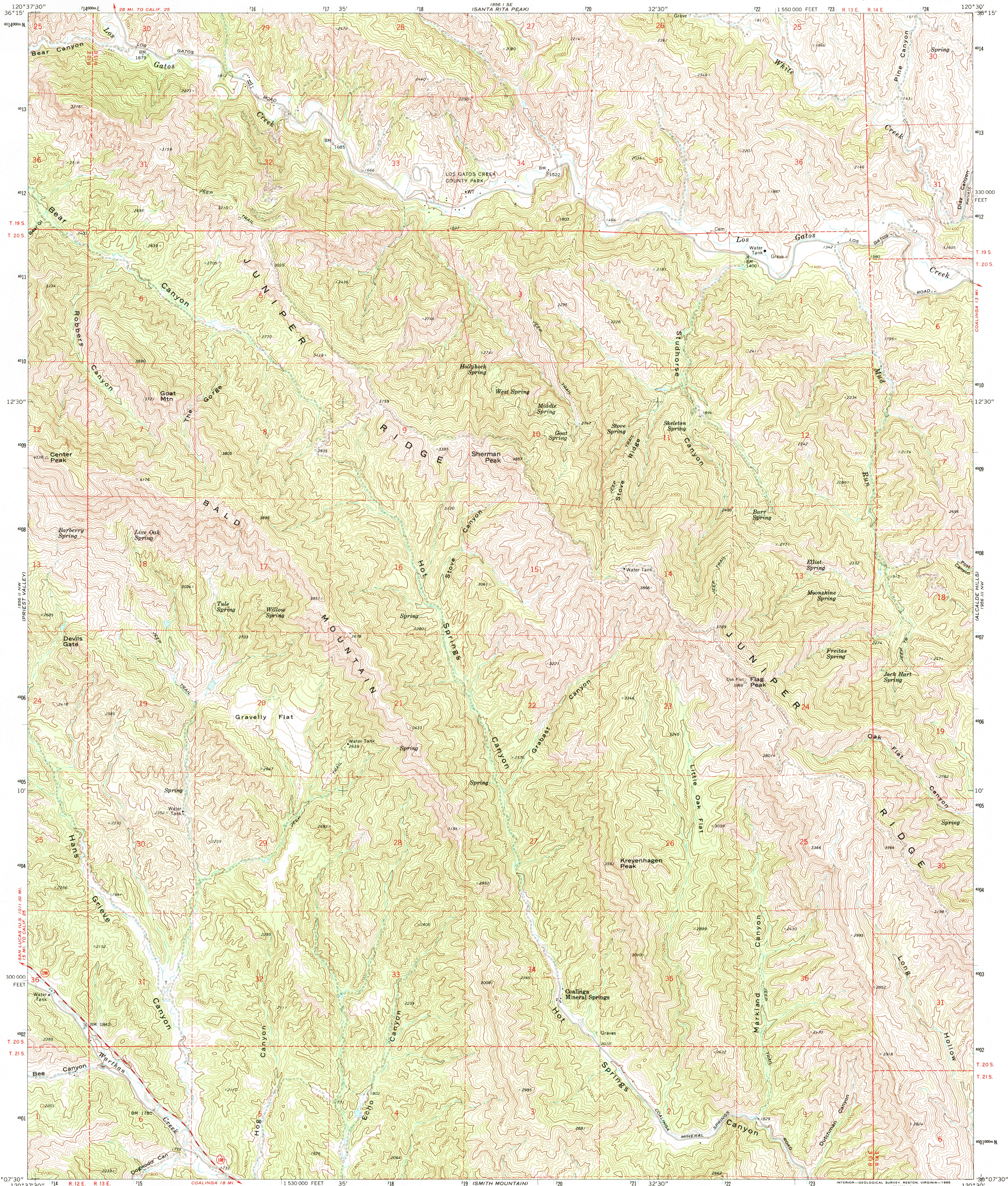
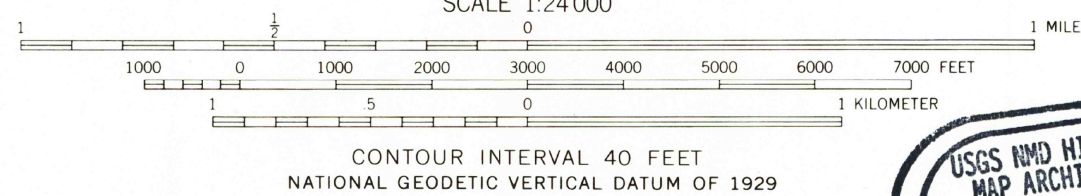
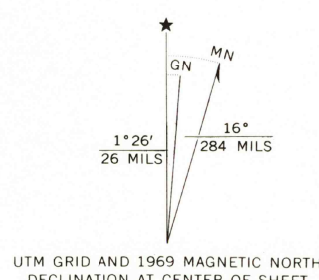


UNITED STATES  
DEPARTMENT OF THE INTERIOR  
GEOLOGICAL SURVEY

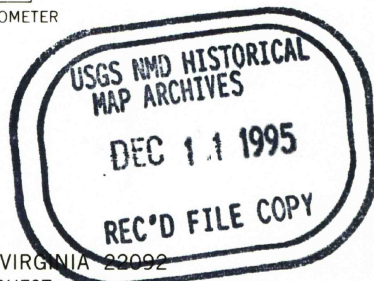
SHERMAN PEAK QUADRANGLE  
CALIFORNIA—FRESNO CO.  
7.5 MINUTE SERIES (TOPOGRAPHIC)  
NE/4 PRIEST VALLEY 15' QUADRANGLE



Mapped, edited, and published by the Geological Survey  
Control by USGS and USC&GS  
Topography by photogrammetric methods from aerial  
photographs taken 1967. Field checked 1969  
Polyconic projection. 1927 North American datum  
10,000-foot grid based on California coordinate system, zone 4  
1000-meter Universal Transverse Mercator grid ticks,  
zone 10, shown in blue  
To place on the predicted North American Datum 1983  
move the projection lines 8 meters north and  
90 meters east as shown by dashed corner ticks  
Fine red dashed lines indicate selected fence lines



THIS MAP COMPLIES WITH NATIONAL MAP ACCURACY STANDARDS  
FOR SALE BY U. S. GEOLOGICAL SURVEY, DENVER, COLORADO 80225, OR RESTON, VIRGINIA 20192  
A FOLDER DESCRIBING TOPOGRAPHIC MAPS AND SYMBOLS IS AVAILABLE ON REQUEST



Map photoinspected 1981  
No major culture or drainage changes observed

ROAD CLASSIFICATION	
Primary highway, hard surface	Light-duty road, hard or improved surface
Secondary highway, hard surface	Unimproved road
Interstate Route	U. S. Route
	State Route

SHERMAN PEAK, CALIF.  
NE/4 PRIEST VALLEY 15' QUADRANGLE  
36123-B5-TF-024

1969  
PHOTOINSPECTED 1981  
DMA 1856 II NE—SERIES V895

