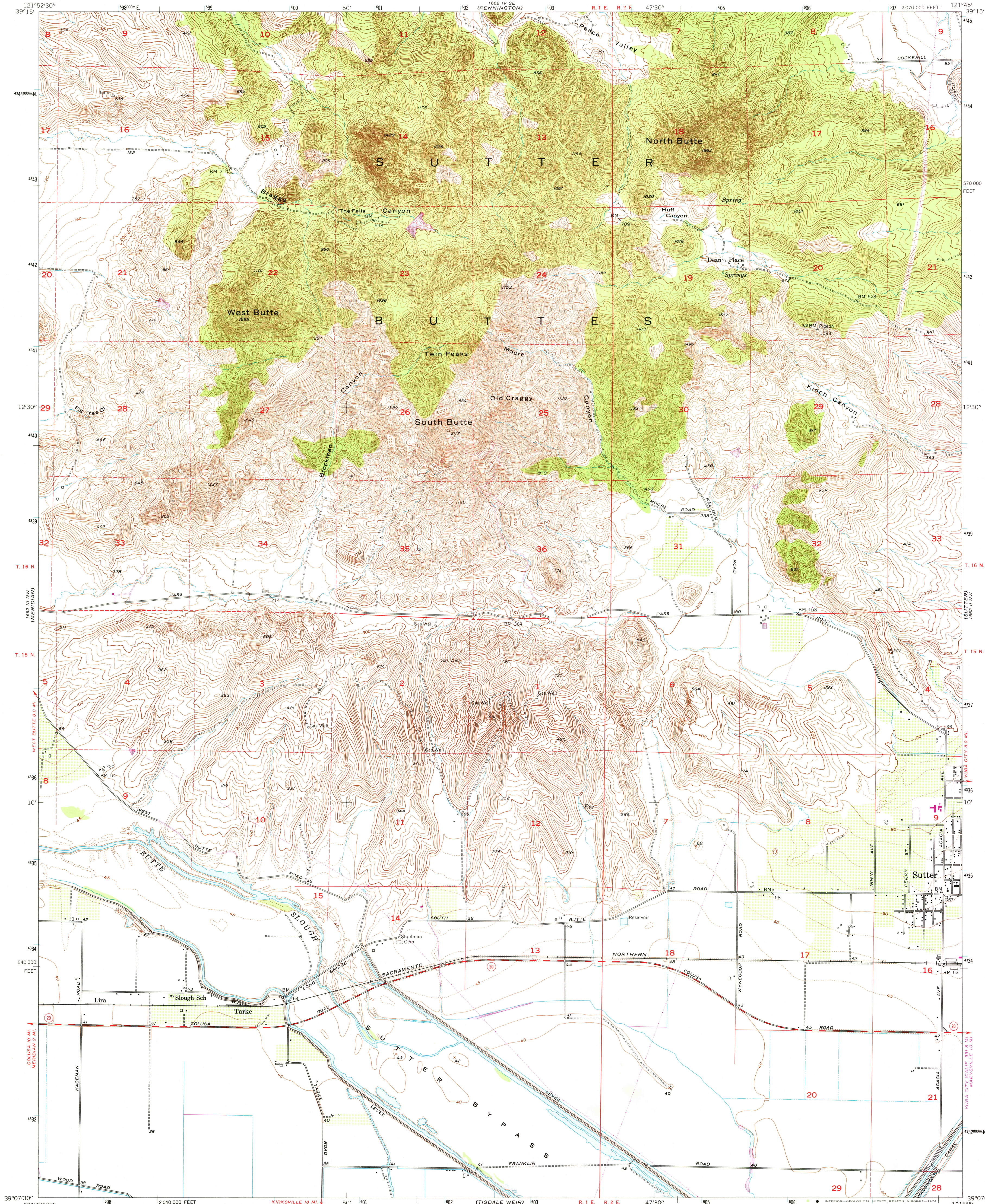
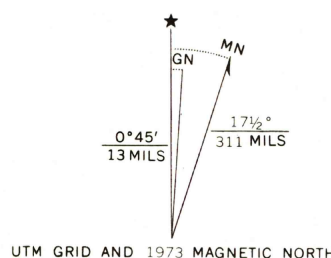


UNITED STATES
DEPARTMENT OF THE INTERIOR
GEOLOGICAL SURVEY

SUTTER BUTTES QUADRANGLE
CALIFORNIA—SUTTER CO.
7.5 MINUTE SERIES (TOPOGRAPHIC)
NE 1/4 SUTTER BUTTES 15' QUADRANGLE



Mapped, edited, and published by the Geological Survey
Control by USGS and USC&GS
Culture and drainage in part from photo mosaic by USBR
Topography by Kelsh plotter and by planetable surveys 1954
Aerial photographs taken 1949. Field check 1954
Polyconic projection. 1927 North American datum
10,000-foot grid based on California coordinate system, zone 2
Dashed land lines indicate approximate locations
1000-meter Universal Transverse Mercator grid ticks,
zone 10, shown in blue



SCALE 1:24,000
CONTOUR INTERVAL 20 FEET
DASHED LINES REPRESENT 5 FOOT CONTOURS
DATUM IS MEAN SEA LEVEL
THIS MAP COMPLIES WITH NATIONAL MAP ACCURACY STANDARDS
FOR SALE BY U. S. GEOLOGICAL SURVEY, DENVER, COLORADO 80225, OR RESTON, VIRGINIA 22092
A FOLDER DESCRIBING TOPOGRAPHIC MAPS AND SYMBOLS IS AVAILABLE ON REQUEST

ROAD CLASSIFICATION
Heavy-duty ——— Light-duty ———
Medium-duty ——— Unimproved dirt ———
U. S. Route ——— State Route ———

USGS
Historical File
Topographic Division
SUTTER BUTTES, CALIFORNIA
NE 1/4 SUTTER BUTTES 15' QUADRANGLE
N3907.5—W12145/7.5
1954
PHOTOREVISED 1973
AMS 1662 III NE—SERIES V895

QUADRANGLE LOCATION
Revisions shown in purple and recompilation of
woodland areas compiled in cooperation with
California Department of Water Resources from
aerial photographs taken 1973. This information
not field checked

DECEMBER 2, 1974