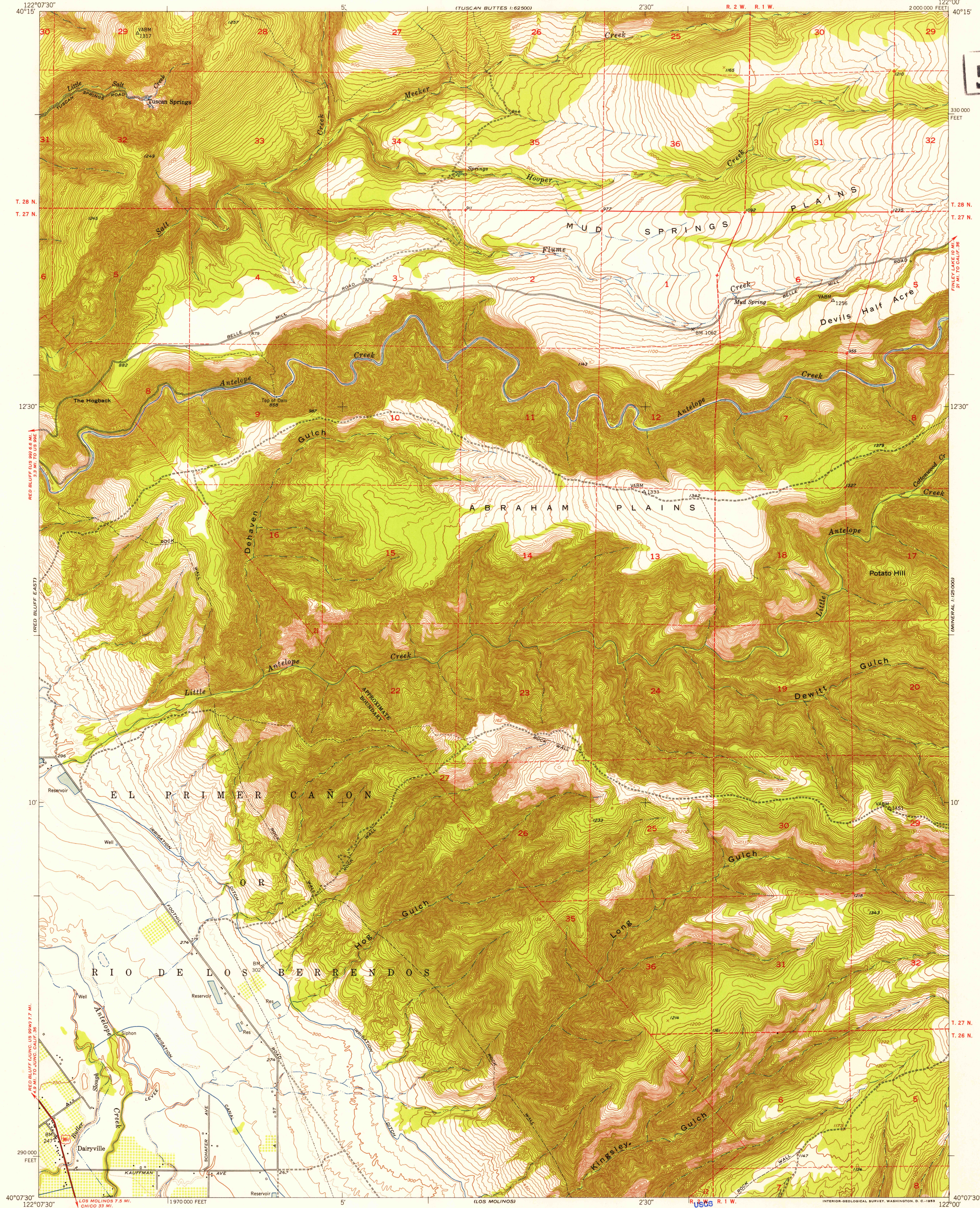


FILE COPY
topographic and editing



Mapped, edited, and published by the Geological Survey

Control by USGS and USC&GS

Topography from aerial photographs by Kelsh plotter and by plane-table surveys 1951. Aerial photographs taken 1947

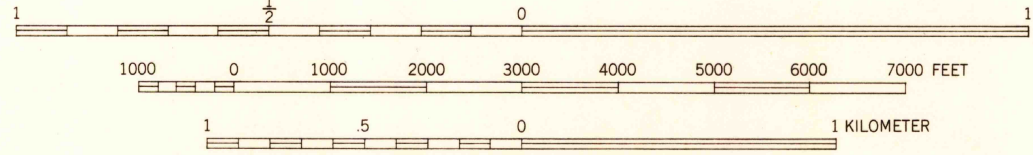
Polyconic projection. 1927 North American datum

10,000-foot grid based on California coordinate system, zone 1

Dashed land lines indicate approximate locations

Unchecked elevations are shown in brown

SCALE 1:24,000



CONTOUR INTERVAL 10 FEET

DOTTED LINES REPRESENT HALF-INTERVAL CONTOURS

DATUM IS MEAN SEA LEVEL

THIS MAP COMPLIES WITH NATIONAL MAP ACCURACY STANDARDS

FOR SALE BY U. S. GEOLOGICAL SURVEY, FEDERAL CENTER, DENVER, COLORADO OR WASHINGTON 25, D. C.

A FOLDER DESCRIBING TOPOGRAPHIC MAPS AND SYMBOLS IS AVAILABLE ON REQUEST

Historical File
Topographic Division

ROAD CLASSIFICATION

Heavy-duty 4 LANE 16 LANE Light-duty 4 LANE 16 LANE
Medium-duty 4 LANE 16 LANE Unimproved dirt 4 LANE 16 LANE

U. S. Route State Route



TUSCAN SPRINGS, CALIF.

NE/4 TEHAMA 15' QUADRANGLE

N4007.5-W12200/7.5

1951

FILE COPY
topographic and editing

OCT 26 1953