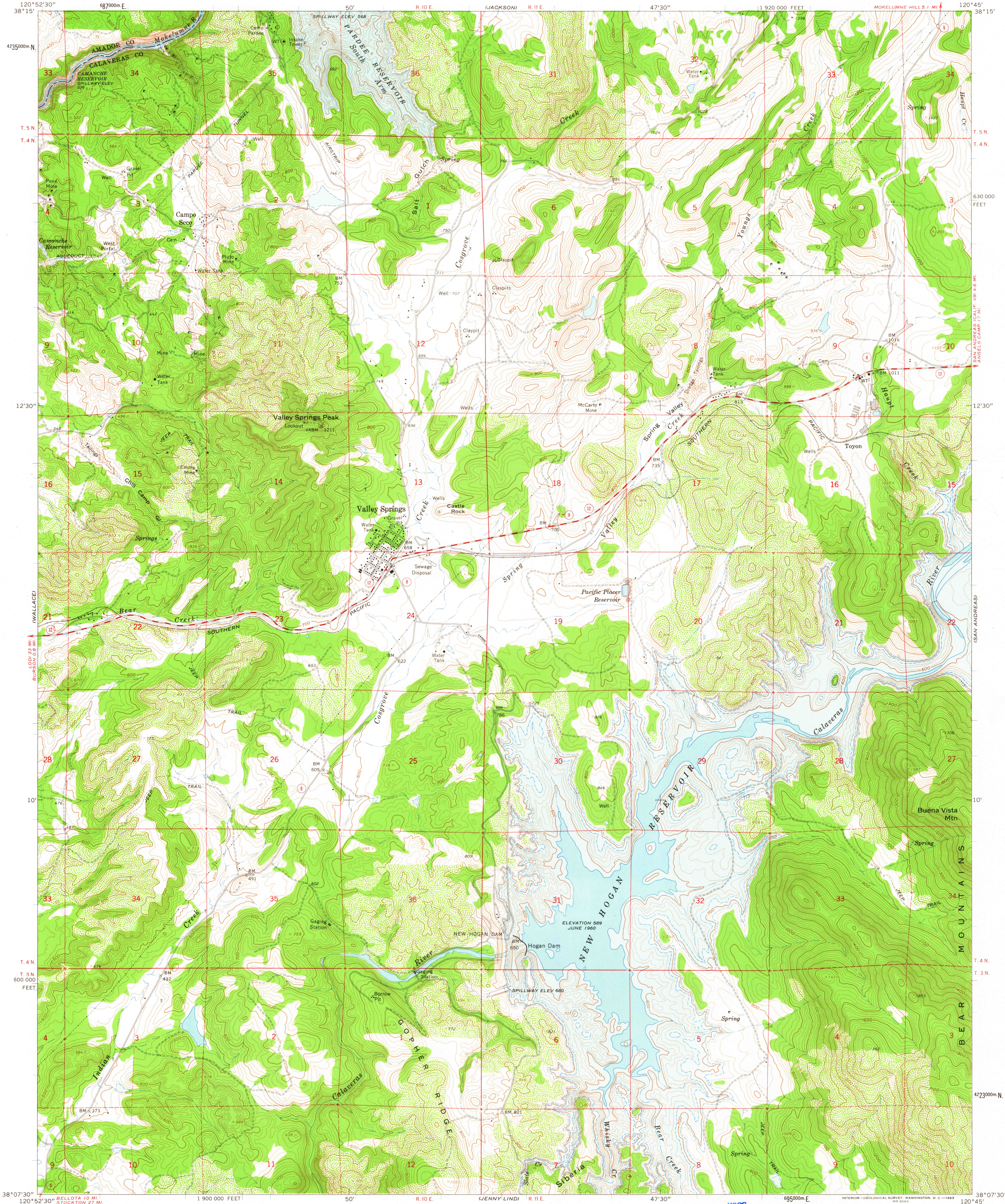
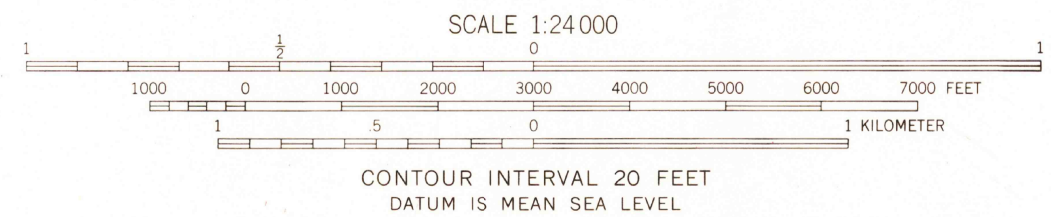
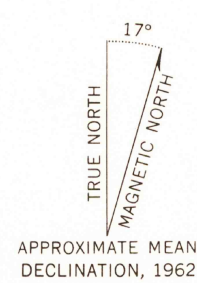


UNITED STATES  
DEPARTMENT OF THE INTERIOR  
GEOLOGICAL SURVEY

VALLEY SPRINGS QUADRANGLE  
CALIFORNIA  
7.5 MINUTE SERIES (TOPOGRAPHIC)  
NE 1/4 VALLEY SPRINGS 15' QUADRANGLE



Maped, edited, and published by the Geological Survey  
in cooperation with California Department of Water Sources  
Control by USGS and USC&GS  
Topography by photogrammetric methods from aerial  
photographs taken 1959. Field checked 1962  
Underwater contours by East Bay Municipal Utility District  
Polyconic projection. 1927 North American datum  
10,000-foot grid based on California coordinate system, zone 3  
1000-meter Universal Transverse Mercator grid ticks,  
zone 10, shown in blue  
Areas covered by dashed light-blue pattern are subject  
to controlled inundation  
Blue hatching indicates areas to be submerged by New Hogan Reservoir  
at elevation 680 and by Camanche Reservoir at elevation 236  
Fine red dashed lines indicate selected fence lines



THIS MAP COMPLIES WITH NATIONAL MAP ACCURACY STANDARDS  
FOR SALE BY U.S. GEOLOGICAL SURVEY, DENVER 25, COLORADO OR WASHINGTON 25, D. C.  
A FOLDER DESCRIBING TOPOGRAPHIC MAPS AND SYMBOLS IS AVAILABLE ON REQUEST

USGS  
Historical File  
Topographic Division



ROAD CLASSIFICATION  
Medium-duty ——— Light-duty ———  
Unimproved dirt ———  
○ State Route

VALLEY SPRINGS, CALIF.  
NE 1/4 VALLEY SPRINGS 15' QUADRANGLE  
N3807.5—W12045/7.5  
1962

00124 1963  
3210