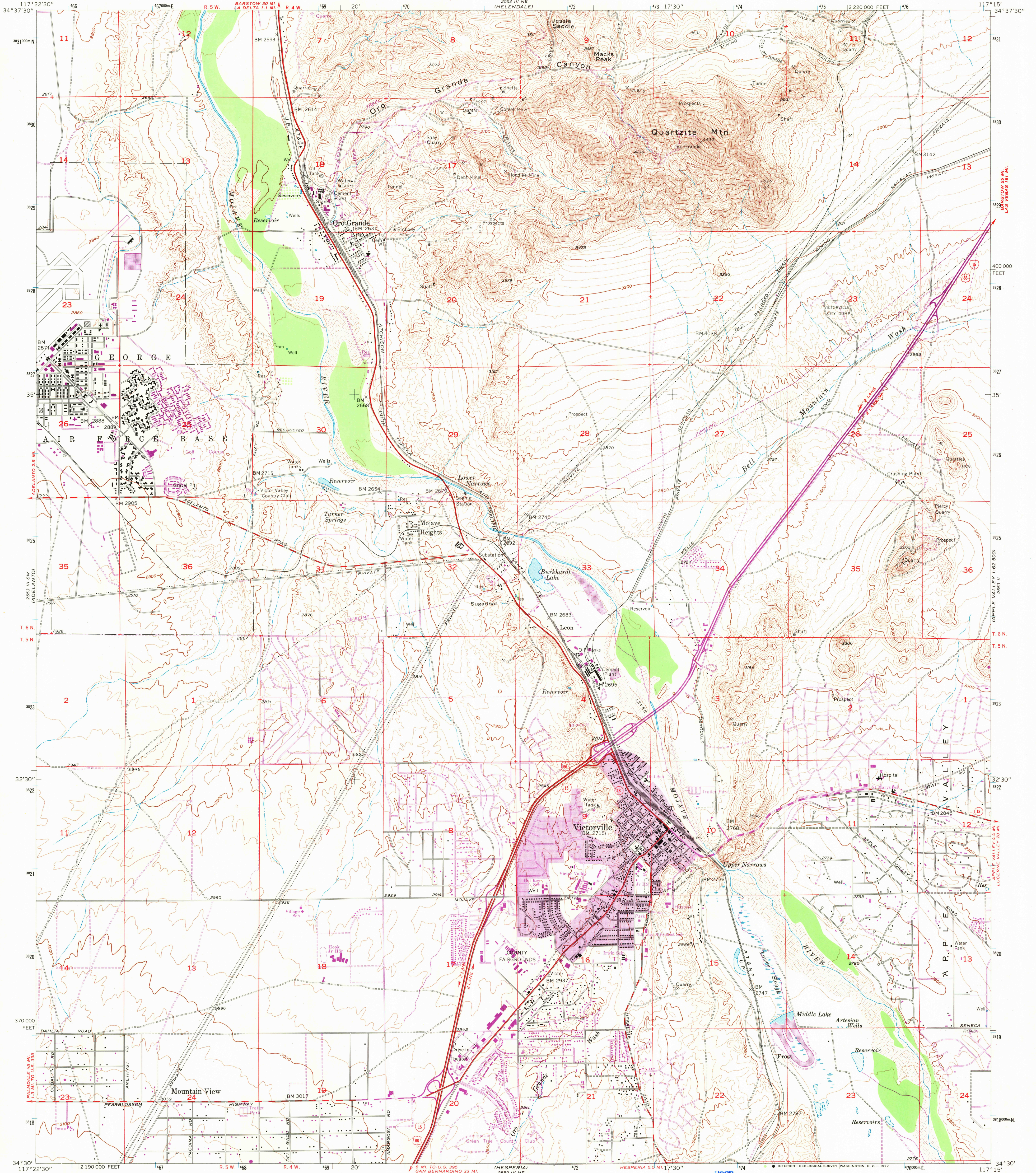
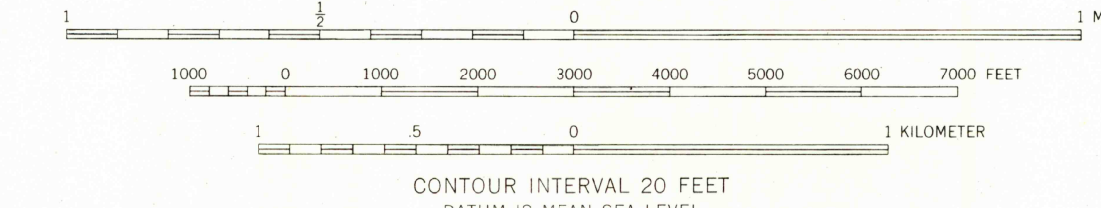
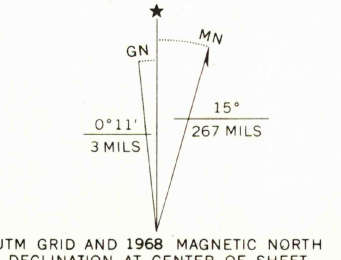


UNITED STATES  
DEPARTMENT OF THE INTERIOR  
GEOLOGICAL SURVEY

VICTORVILLE QUADRANGLE  
CALIFORNIA—SAN BERNARDINO CO.  
7.5 MINUTE SERIES (TOPOGRAPHIC)  
SE/4 VICTORVILLE 15' QUADRANGLE



Mapped, edited, and published by the Geological Survey  
Control by USGS and USC&GS  
Topography from aerial photographs by Wild A-8 plotter  
Aerial photographs taken 1952. Field check 1956  
Polyconic projection. 1927 North American datum  
10,000-foot grid based on California coordinate system, zone 5  
1,000-meter Universal Transverse Mercator grid ticks,  
zone 11, shown in blue  
Dashed land lines indicate approximate locations  
Revised in cooperation with California  
Department of Water Resources



USGS  
Historical File  
Topographic Division



ROAD CLASSIFICATION  
Heavy-duty ——— Light-duty ———  
Medium-duty ——— Unimproved dirt ———  
Interstate Route ——— U.S. Route ——— State Route ———

VICTORVILLE, CALIF.  
SE/4 VICTORVILLE 15' QUADRANGLE  
N3430—W11715/7.5

1956  
PHOTOGRAPHED 1956  
AMS 2553 III SE—SERIES V895

THIS MAP COMPLIES WITH NATIONAL MAP ACCURACY STANDARDS  
FOR SALE BY U.S. GEOLOGICAL SURVEY, DENVER, COLORADO 80225, OR WASHINGTON, D.C. 20242  
A FOLDER DESCRIBING TOPOGRAPHIC MAPS AND SYMBOLS IS AVAILABLE ON REQUEST

Revisions shown in purple compiled from aerial photographs  
taken 1968. This information not field checked  
Purple tint indicates extension of urban areas

DEC 24 1968