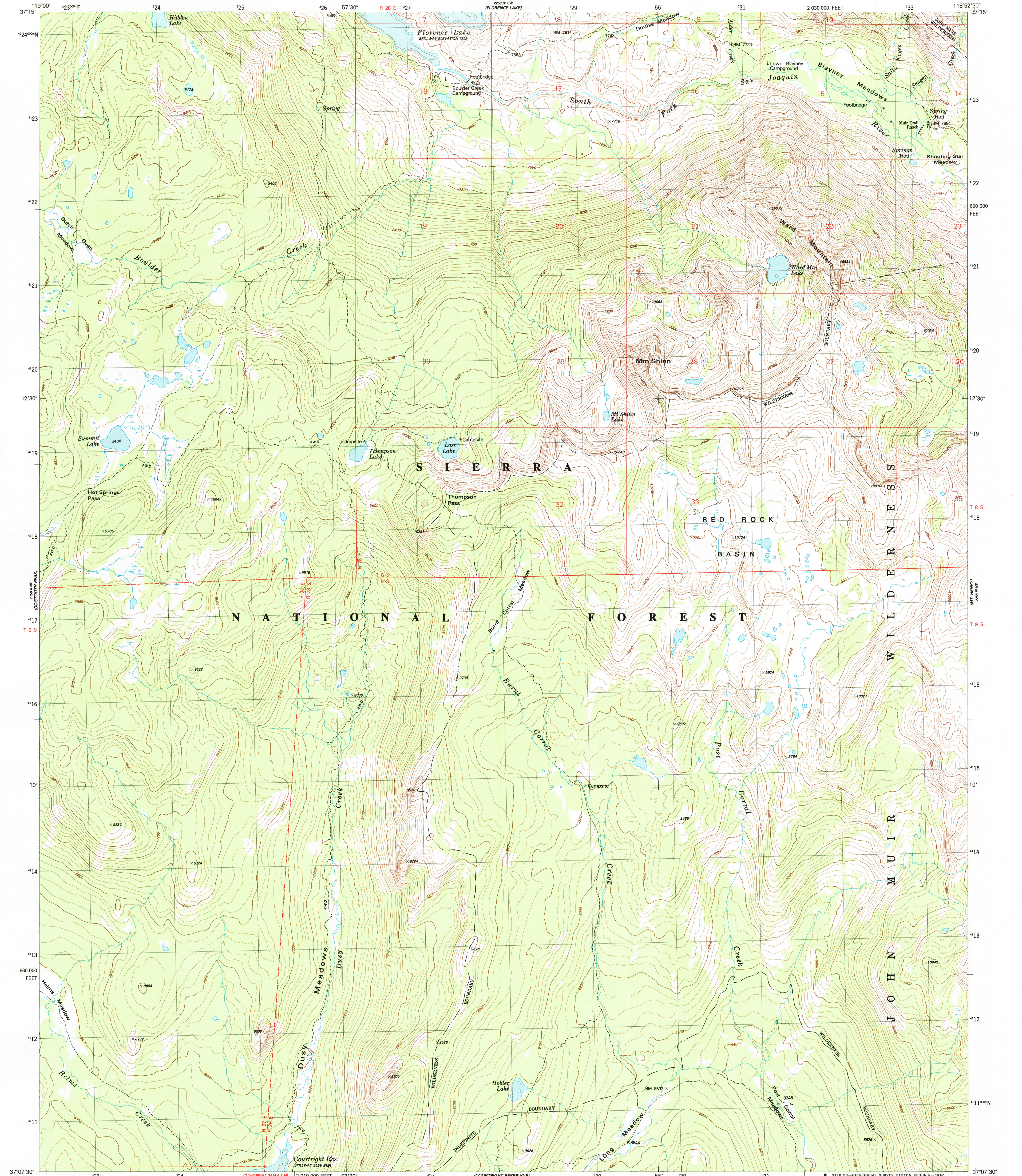


UNITED STATES
DEPARTMENT OF THE INTERIOR
GEOLOGICAL SURVEY

WARD MOUNTAIN QUADRANGLE
CALIFORNIA—FRESNO CO.
7.5 MINUTE SERIES (TOPOGRAPHIC)
NW/4 BLACKCAP MOUNTAIN 15' QUADRANGLE



Mapped, edited, and published by the Geological Survey

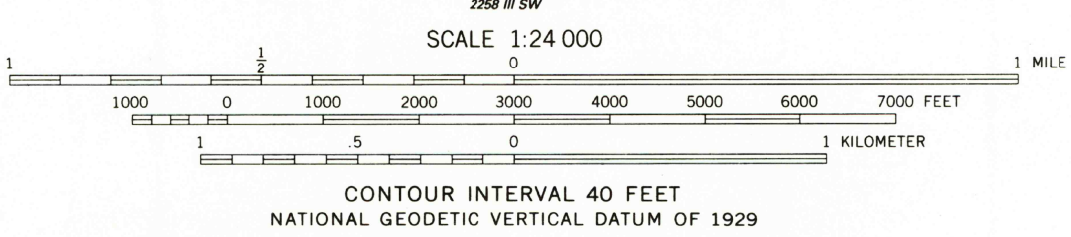
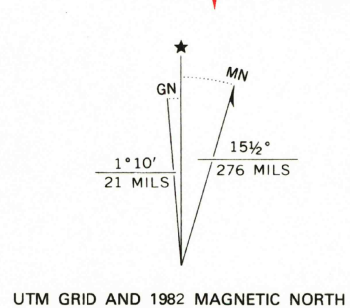
Control by USGS and NOS/NOAA

Topography by photogrammetric methods from aerial photographs taken 1975-76. Field checked 1977. Map edited 1982. Underwater contours by So. Calif. Edison and Pacific Gas and Electric Companies.

Projection and 10,000-foot grid ticks: California coordinate system, zone 4 (Lambert conformal conic) 1000-meter Universal Transverse Mercator grid, zone 11 1927 North American Datum

To place on the predicted North American Datum 1983 move the projection lines 10 meters north and 85 meters east as shown by dashed corner ticks

There may be private inholdings within the boundaries of the National or State reservations shown on this map



THIS MAP COMPLIES WITH NATIONAL MAP ACCURACY STANDARDS
FOR SALE BY U.S. GEOLOGICAL SURVEY, DENVER, COLORADO 80225, OR RESTON, VIRGINIA 22092
A FOLDER DESCRIBING TOPOGRAPHIC MAPS AND SYMBOLS IS AVAILABLE ON REQUEST

ROAD CLASSIFICATION
Trails



WARD MOUNTAIN, CALIF.
NW/4 BLACKCAP MOUNTAIN 15' QUADRANGLE
37118-B8-TF-024

1982

DMA 2258 III NW-SERIES V895