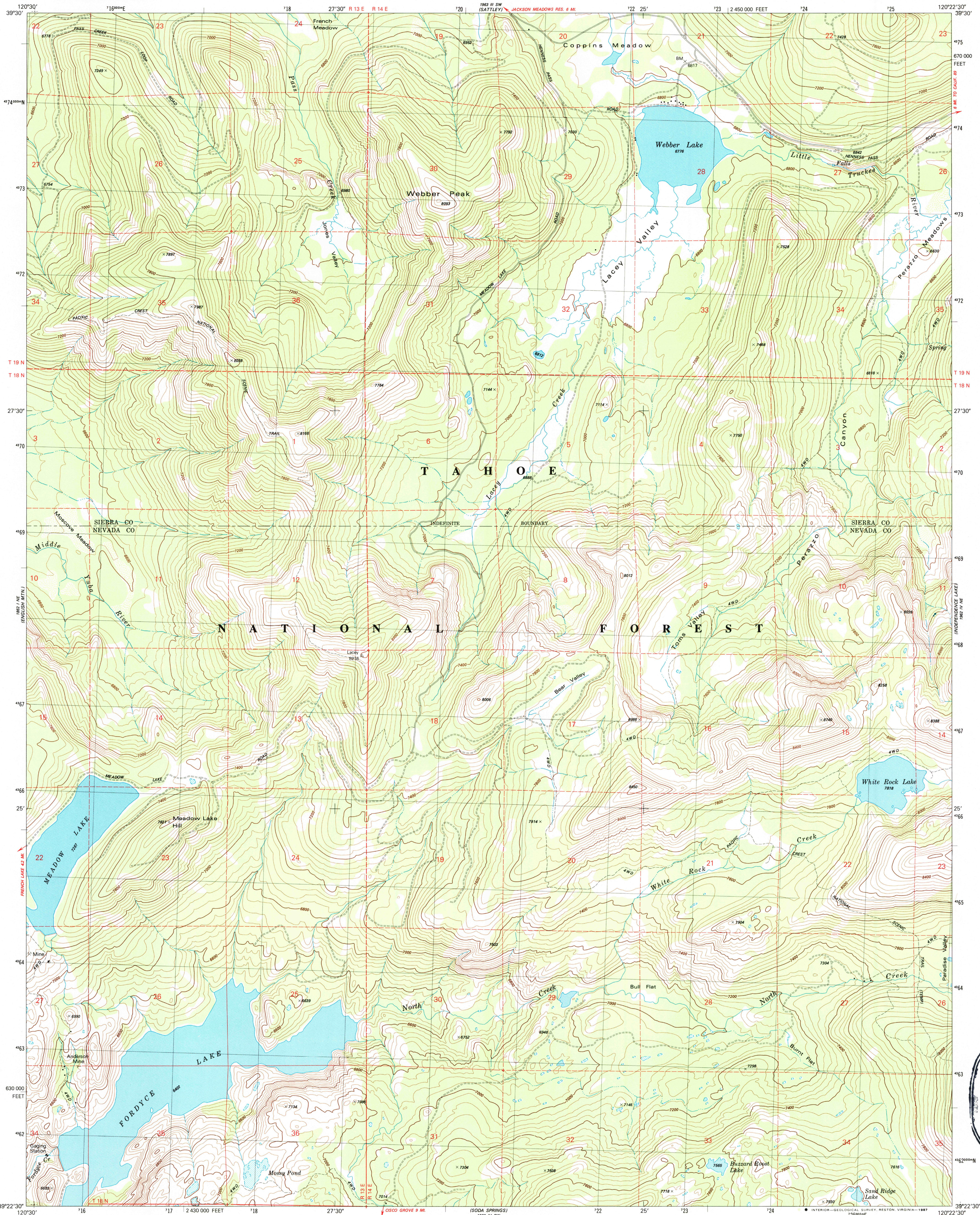


UNITED STATES
DEPARTMENT OF THE INTERIOR
GEOLOGICAL SURVEY

WEBBER PEAK QUADRANGLE
CALIFORNIA
7.5 MINUTE SERIES (TOPOGRAPHIC)
NW/4 DONNER PASS 15' QUADRANGLE

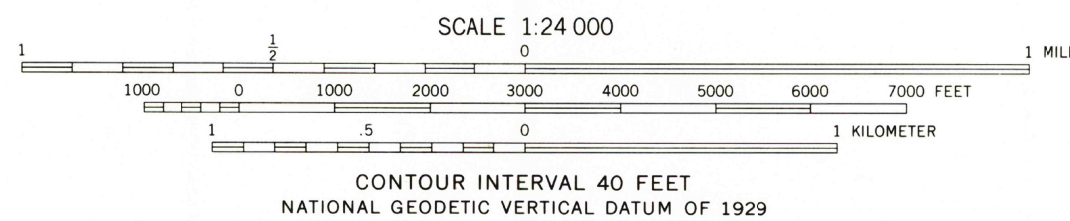
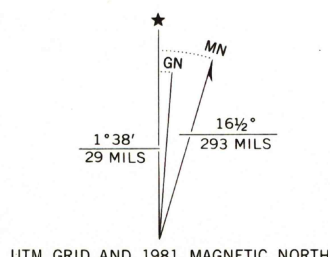


Mapped, edited, and published by the Geological Survey

Control by USGS and NOS/NOAA
Topography by photogrammetric methods from aerial
photographs taken 1973-74. Field checked 1975
Map edited 1981

Projection and 10,000-foot grid ticks: California coordinate
system, zone 2 (Lambert conformal conic)
1000-meter Universal Transverse Mercator grid, zone 10
1927 North American Datum
To place on the predicted North American Datum 1983
move the projection lines 15 meters north and
89 meters east as shown by dashed corner ticks

There may be private inholdings within the boundaries of
the National or State reservations shown on this map



ROAD CLASSIFICATION
Primary highway, hard surface
Secondary highway, hard surface
Unimproved road
Light duty road, hard or improved surface
Interstate Route
U. S. Route
State Route

WEBBER PEAK, CALIF.
NW/4 DONNER PASS 15' QUADRANGLE
39120-D4-TF-C24

1981

DMA 1962 IV NW-SERIES V895

