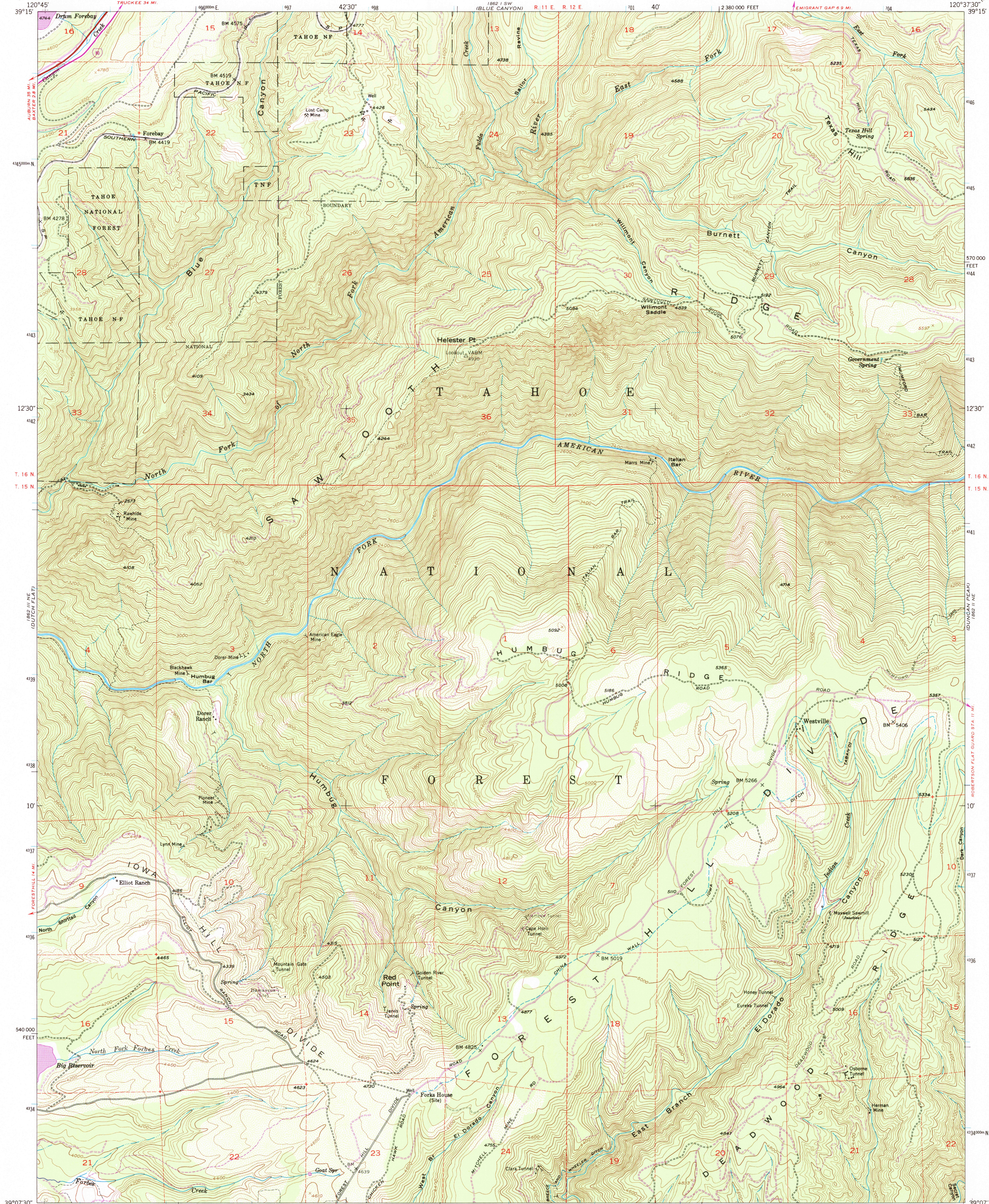
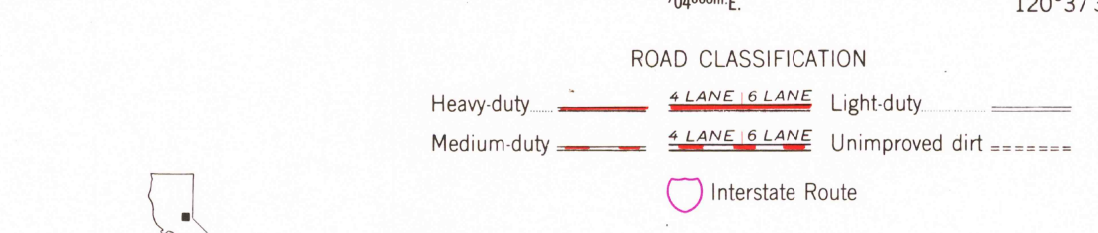
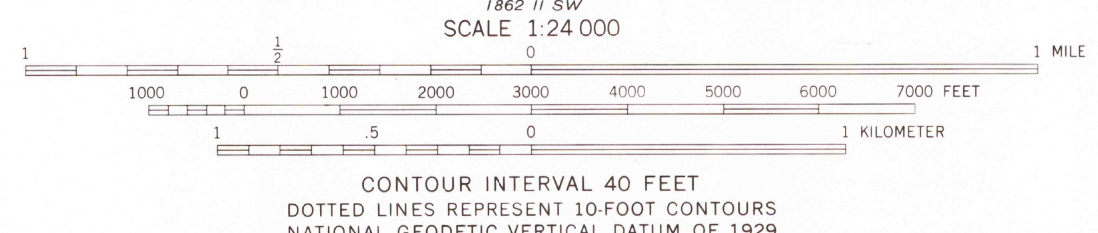
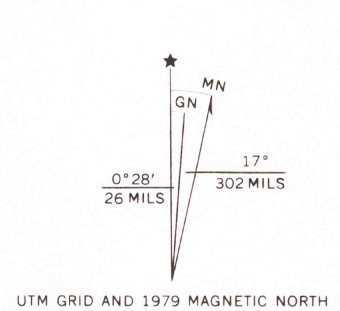


UNITED STATES  
DEPARTMENT OF THE INTERIOR  
GEOLOGICAL SURVEY

WESTVILLE QUADRANGLE  
CALIFORNIA—PLACER CO.  
7.5 MINUTE SERIES (TOPOGRAPHIC)  
NW/4 DUNCAN PEAK 15' QUADRANGLE



Mapped, edited, and published by the Geological Survey  
Control by USGS and NOS/NOAA  
Topography from aerial photographs by multiplex methods  
Aerial photographs taken 1948. Field check 1952  
Polyconic projection. 1927 North American datum  
10,000-foot grid based on California coordinate system, zone 2  
1000-meter Universal Transverse Mercator grid ticks,  
zone 10, shown in blue  
To place on the predicted North American Datum 1983  
move the projection lines 15 meters north and  
89 meters east as shown by dashed corner ticks  
There may be private inholdings within the boundaries of  
the National or State reservations shown on this map



WESTVILLE, CALIF.  
NW/4 DUNCAN PEAK 15' QUADRANGLE  
N3907.5—W12037.5/7.5  
1952  
PHOTOREVISED 1979  
DMA 1862 II NW—SERIES V895

THIS MAP COMPLIES WITH NATIONAL MAP ACCURACY STANDARDS  
FOR SALE BY U. S. GEOLOGICAL SURVEY, DENVER, COLORADO 80225, OR RESTON, VIRGINIA 22092  
A FOLDER DESCRIBING TOPOGRAPHIC MAPS AND SYMBOLS IS AVAILABLE ON REQUEST

Revisions shown in purple compiled by the U.S. Forest Service  
from aerial photographs taken 1976 and other source data  
This information not field checked. Map edited by the  
Geological Survey 1979

MAR 25 1994  
GREG STORV