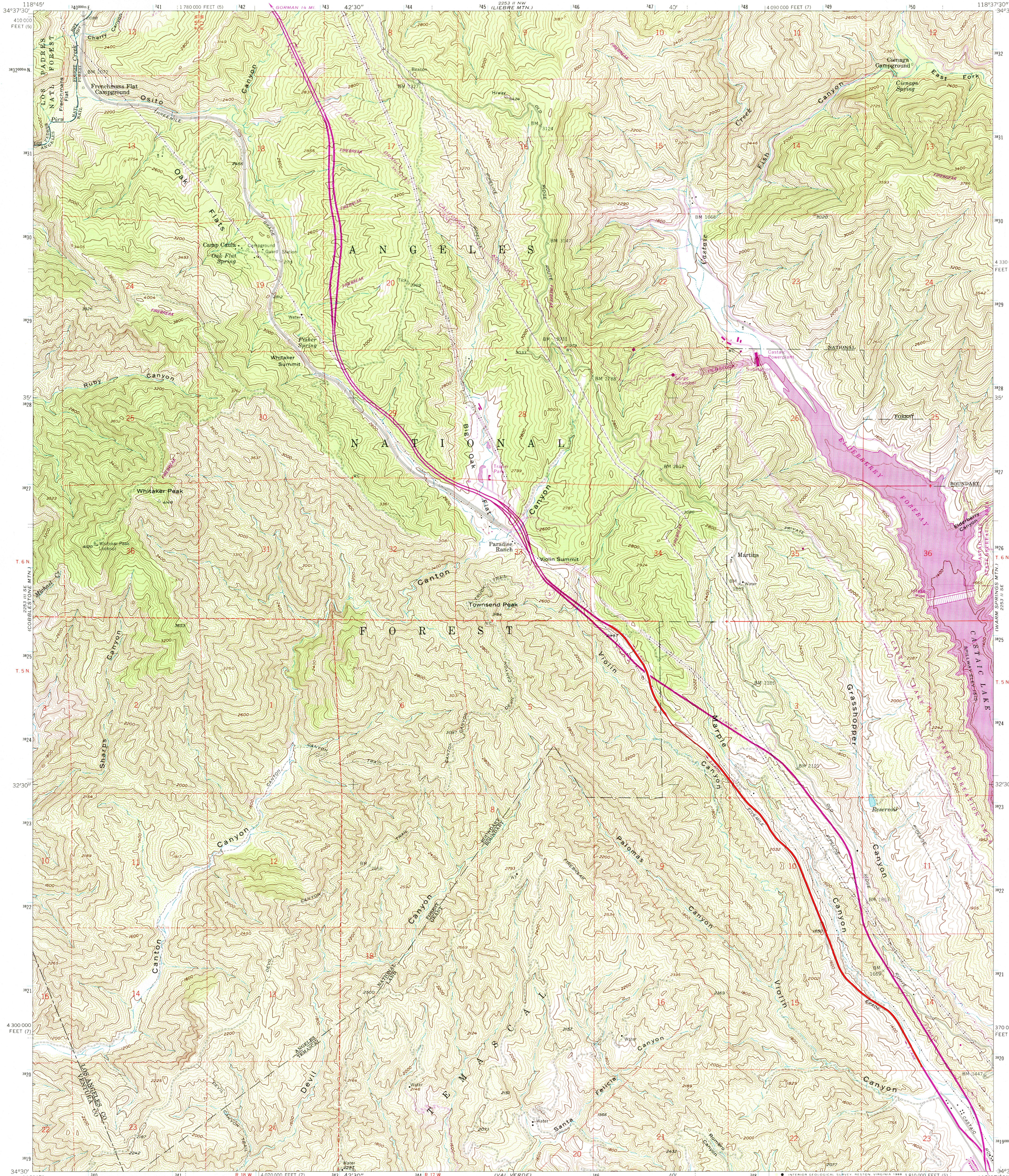


UNITED STATES
DEPARTMENT OF THE INTERIOR
GEOLOGICAL SURVEY

WHITAKER PEAK QUADRANGLE
CALIFORNIA
7.5 MINUTE SERIES (TOPOGRAPHIC)



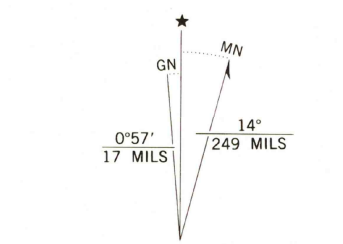
Mapped, edited, and published by the Geological Survey

Control by USGS, NOS/NOAA, and Los Angeles Co.
Topography from aerial photographs by photogrammetric methods
Aerial photographs taken 1956. Field check 1958

Polycyclic projection. 1927 North American Datum
10,000-foot grid based on California coordinate system, zones 7 and 5
1000-meter Universal Transverse Mercator grid ticks,
zone 11, shown in blue

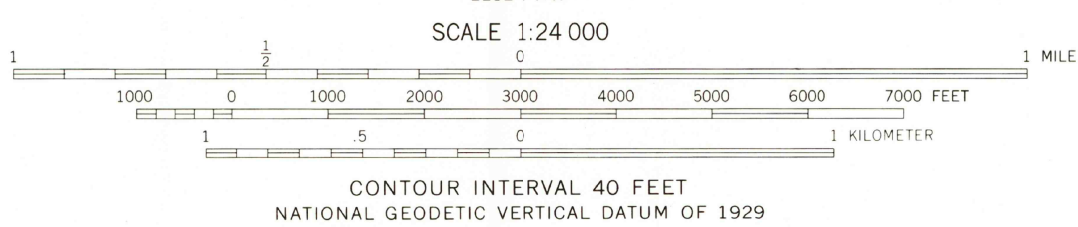
Dashed land lines indicate approximate locations
Certain land lines are omitted in T. 6 N. - R. 18 W.
because of insufficient data

Unchecked elevations are shown in brown
To place on the predicted North American Datum 1983
move the projection lines 5 meters north and
85 meters east as shown by dashed corner ticks

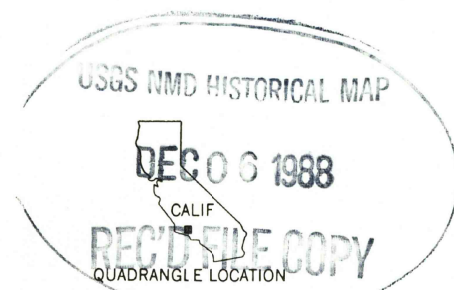


UTM GRID and 1988 MAGNETIC NORTH
DECLINATION at CENTER OF SHEET

There may be private inholdings within
the boundaries of the National or State
reservations shown on this map



THIS MAP COMPLIES WITH NATIONAL MAP ACCURACY STANDARDS
FOR SALE BY U. S. GEOLOGICAL SURVEY, DENVER, COLORADO 80225, OR RESTON, VIRGINIA 22092
A FOLDER DESCRIBING TOPOGRAPHIC MAPS AND SYMBOLS IS AVAILABLE ON REQUEST



Revisions shown in purple and woodland compiled from
aerial photographs taken 1985 and other source data.
Partial check by U. S. Forest Service. Map edited 1988

ROAD CLASSIFICATION	
Heavy-duty	Light-duty
Medium-duty	Unimproved dirt
	Interstate Route

WHITAKER PEAK, CALIF.
34118-E6-TF-024

1958
PHOTOREVISED 1988
DMA 2253 II SW-SERIES V895