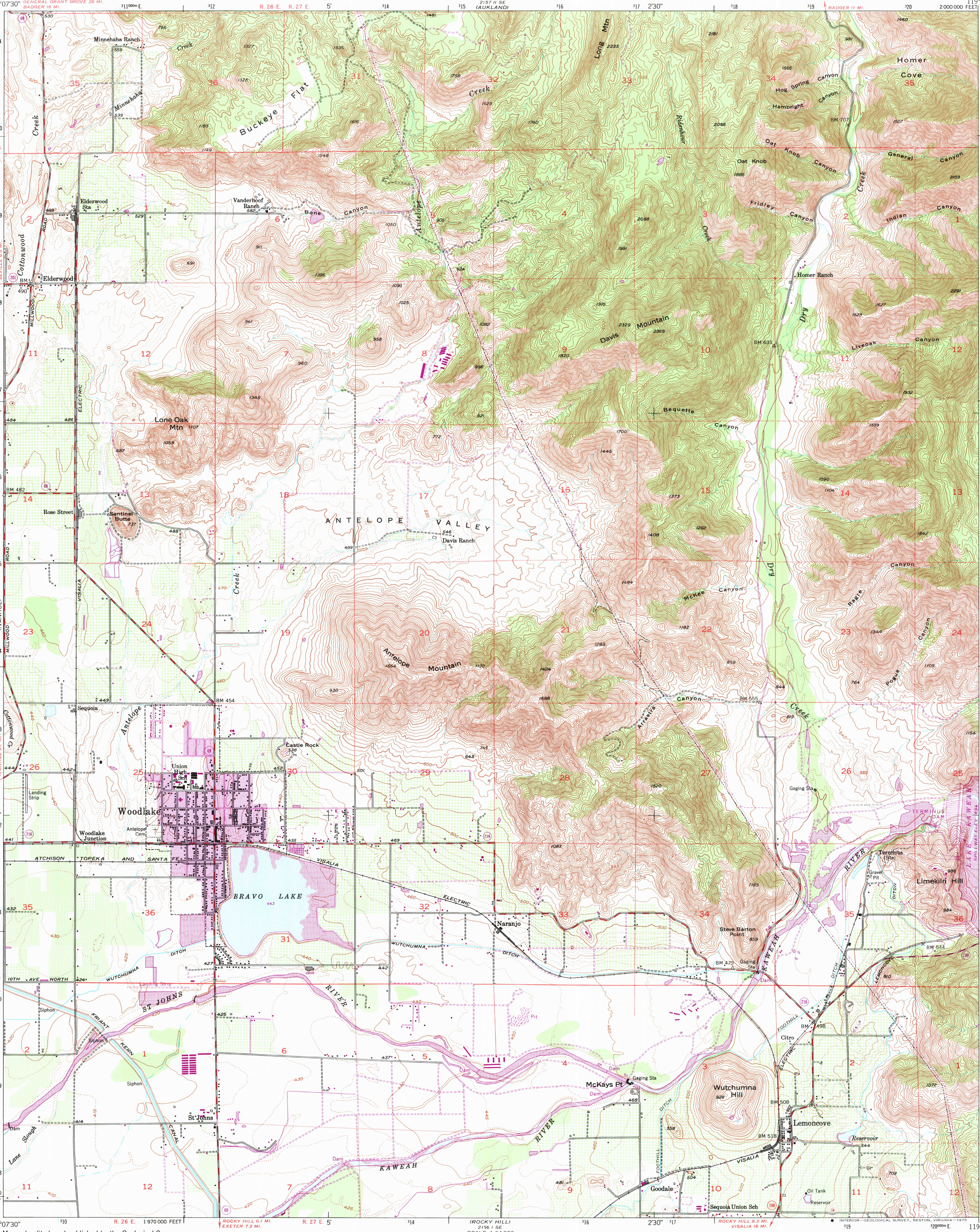


UNITED STATES
DEPARTMENT OF THE INTERIOR
GEOLOGICAL SURVEY

STATE OF CALIFORNIA
DEPARTMENT OF WATER RESOURCES

WOODLAKE QUADRANGLE
CALIFORNIA—TULARE CO.
7.5 MINUTE SERIES (TOPOGRAPHIC)
NE/4 EXETER 15' QUADRANGLE
2000 000 FEET



Mapped, edited, and published by the Geological Survey

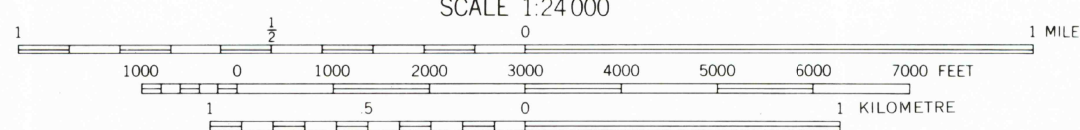
Control by USGS and USC&GS

Topography by plane-table surveys 1925 and by Kelsh Plotter
Culture and drainage by photogrammetric methods from
aerial photographs taken 1946
Contour revision and field check 1952

Polyconic projection. 1927 North American datum
10,000-foot grid based on California coordinate system, zone 4
1000-metre Universal Transverse Mercator grid ticks,
zone 11, shown in blue

Dotted land lines established by private survey
Purple tint indicates extension of urban areas

Revisions shown in purple compiled in cooperation
with California Department of Water Resources from
aerial photographs taken 1969. This information
not field checked



CONTOUR INTERVAL 20 FEET
DOTTED LINES REPRESENT 5 FOOT CONTOURS
NATIONAL GEODETIC VERTICAL DATUM OF 1929

THIS MAP COMPLIES WITH NATIONAL MAP ACCURACY STANDARDS
FOR SALE BY U.S. GEOLOGICAL SURVEY, DENVER, COLORADO 80225, OR RESTON, VIRGINIA 22092
A FOLDER DESCRIBING TOPOGRAPHIC MAPS AND SYMBOLS IS AVAILABLE ON REQUEST

ROAD CLASSIFICATION
Heavy-duty 4 LANE 6 LANE Light-duty
Medium-duty 4 LANE 6 LANE Unimproved dirt
U. S. Route State Route

WOODLAKE, CALIF.
NE/4 EXETER 15' QUADRANGLE
N3622.5—W11900/7.5

1952
PHOTOREVISED 1969
AMS 2156 1 NE—SERIES V895