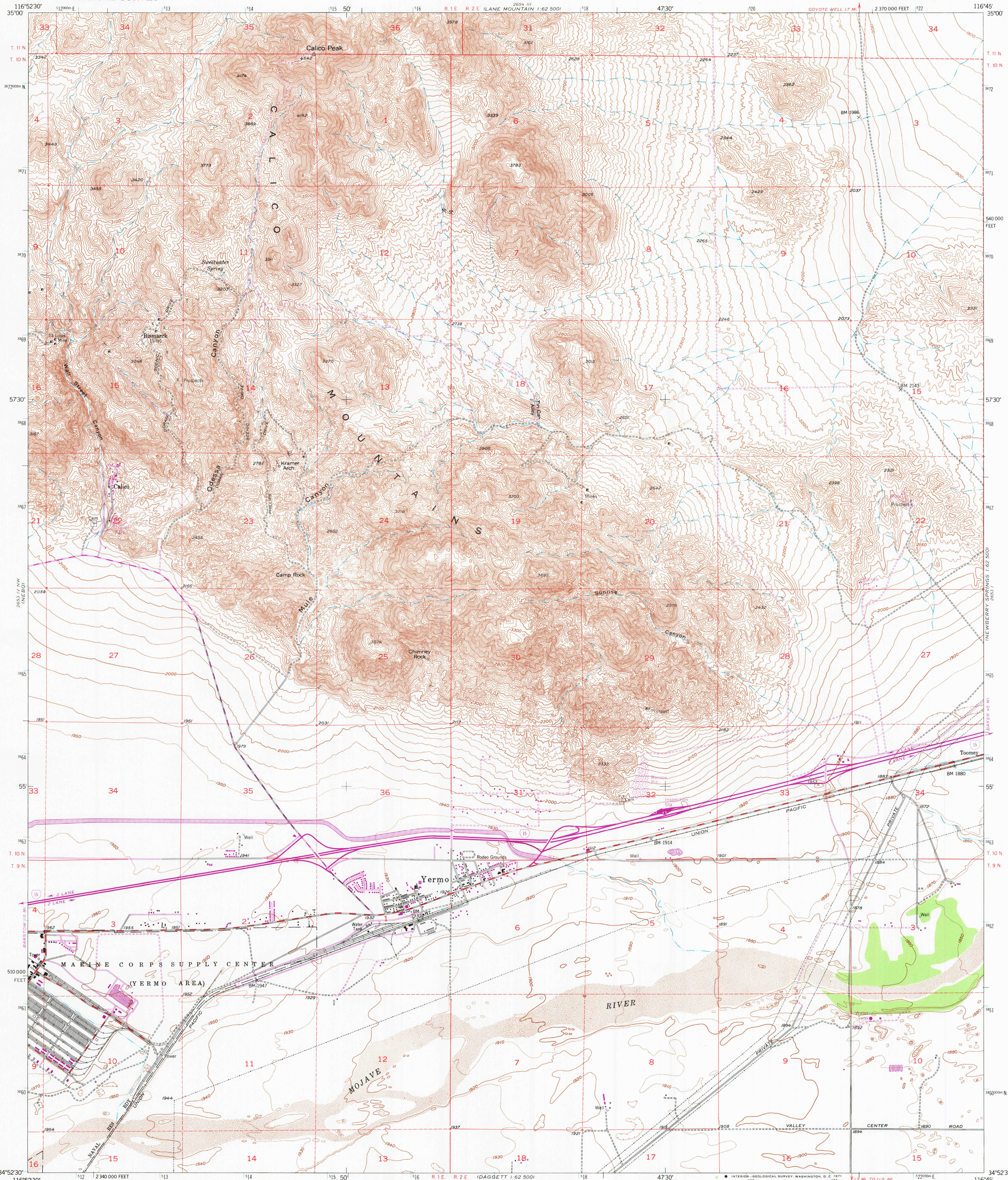


UNITED STATES
DEPARTMENT OF THE INTERIOR
GEOLOGICAL SURVEY

YERMO QUADRANGLE
CALIFORNIA—SAN BERNARDINO CO.
7.5 MINUTE SERIES (TOPOGRAPHIC)
NE/4 DAGGETT 15' QUADRANGLE



Mapped, edited, and published by the Geological Survey

Control by USGS and USC&GS

Topography from aerial photographs by Kelsh plotter methods
and by plane-table surveys 1953. Aerial photographs taken 1951

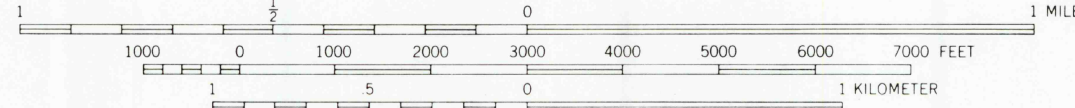
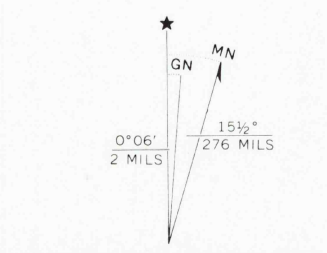
Polyconic projection, 1927 North American datum
10,000-foot grid based on California coordinate system, zone 5

Dashed land lines indicate approximate locations

Unchecked elevations are shown in brown

1000-meter Universal Transverse Mercator grid ticks,
zone 11, shown in blue

Revisions shown in purple compiled from aerial photographs
taken 1970. This information not field checked



CONTOUR INTERVAL 20 FEET
DOTTED LINES REPRESENT HALF-INTERVAL CONTOURS
DATUM IS MEAN SEA LEVEL

THIS MAP COMPLIES WITH NATIONAL MAP ACCURACY STANDARDS
FOR SALE BY U. S. GEOLOGICAL SURVEY, DENVER, COLORADO 80225, OR WASHINGTON, D. C. 20242
A FOLDER DESCRIBING TOPOGRAPHIC MAPS AND SYMBOLS IS AVAILABLE ON REQUEST



ROAD CLASSIFICATION	
Medium-duty	Light-duty
Unimproved dirt	
Interstate Route	Heavy-duty

YERMO, CALIF.
NE/4 DAGGETT 15' QUADRANGLE
N3452.5—W11645/7.5

1953
PHOTOREVISED 1970
AMS 2653 IV NE—SERIES V895