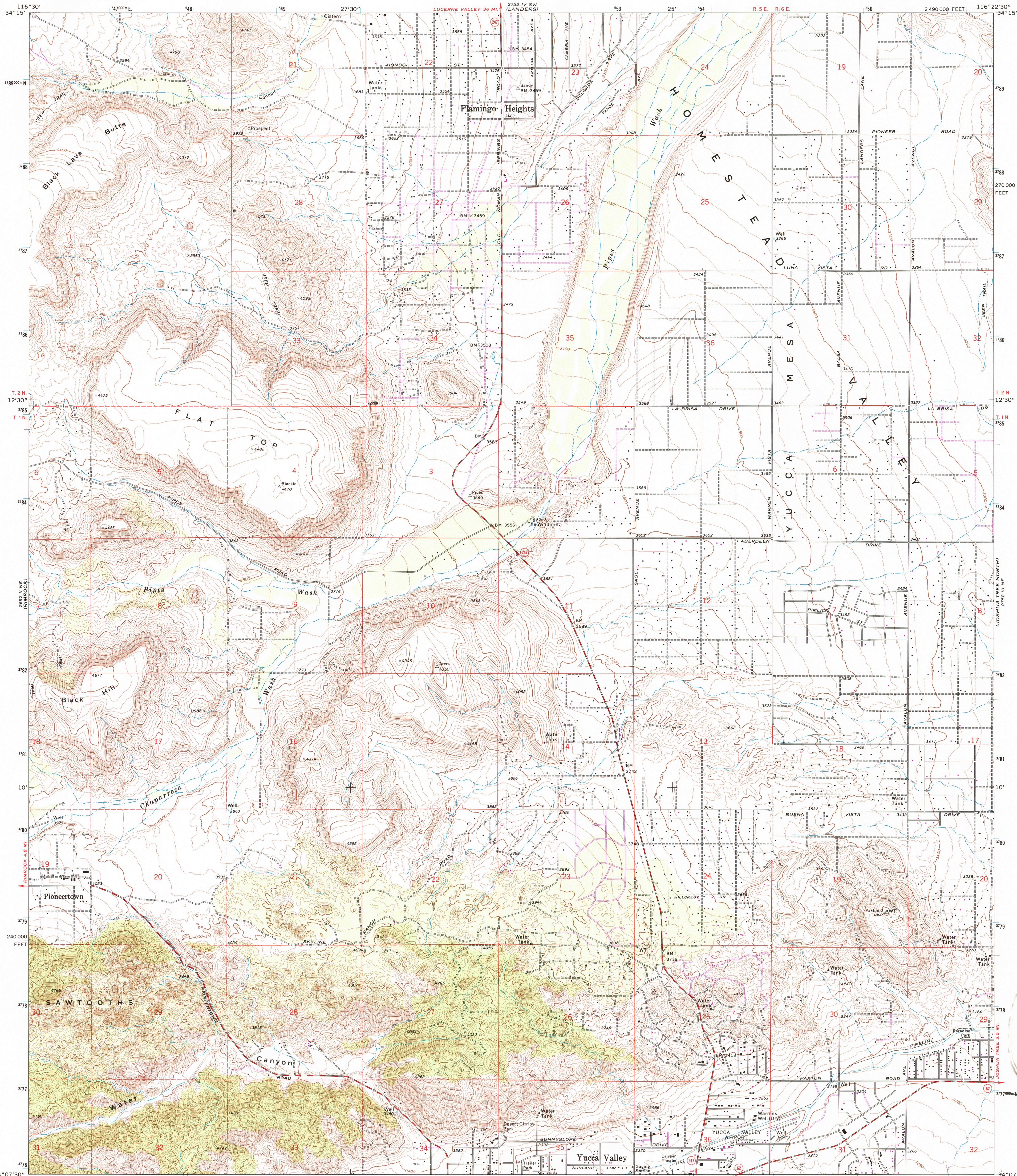
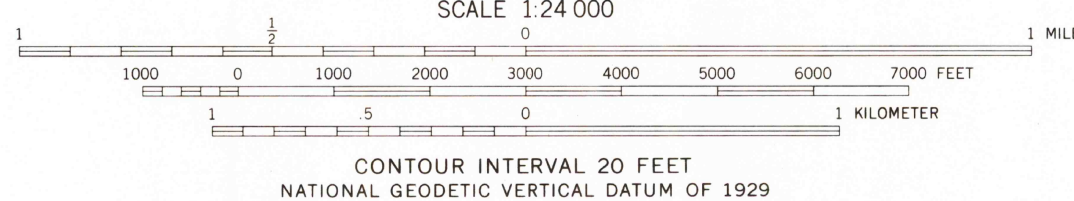
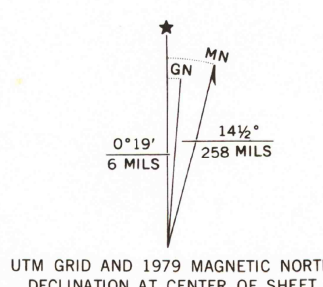


UNITED STATES  
DEPARTMENT OF THE INTERIOR  
GEOLOGICAL SURVEY

YUCCA VALLEY NORTH QUADRANGLE  
CALIFORNIA—SAN BERNARDINO CO.  
7.5 MINUTE SERIES (TOPOGRAPHIC)  
NW 1/4 JOSHUA TREE 15' QUADRANGLE



Mapped, edited, and published by the Geological Survey  
in cooperation with California Department of Water Resources  
Control by USGS, NOS/NOAA, USCE, and San Bernardino County  
Topography by photogrammetric methods from aerial  
photographs taken 1970. Field checked 1972  
Projection and 10,000-foot grid ticks: California coordinate  
system, zone 5 (Lambert conformal conic)  
1000-meter Universal Transverse Mercator grid ticks,  
zone 11, shown in blue. 1927 North American datum  
To place on the predicted North American Datum 1983  
move the projection lines 1 meter north and  
80 meters east as shown by dashed corner ticks  
Where omitted land lines have not been established



THIS MAP COMPLIES WITH NATIONAL MAP ACCURACY STANDARDS  
FOR SALE BY U. S. GEOLOGICAL SURVEY, DENVER, COLORADO 80225, OR RESTON, VIRGINIA 22092  
A FOLDER DESCRIBING TOPOGRAPHIC MAPS AND SYMBOLS IS AVAILABLE ON REQUEST



Revisions shown in purple and woodland compiled from  
aerial photographs taken 1976 and other source data  
This information not field checked. Map edited 1979

ROAD CLASSIFICATION  
Primary highway, hard surface  
Secondary highway, hard surface  
Light-duty road, hard or improved surface  
Unimproved road  
Interstate Route  
U. S. Route  
State Route

YUCCA VALLEY NORTH, CALIF.  
NW 1/4 JOSHUA TREE 15' QUADRANGLE  
34116-B4-TF-024

1972  
PHOTOREVISED 1979  
DMA 2752 III NW—SERIES V895

DEFO 12 1986  
PCPD FILE CONV