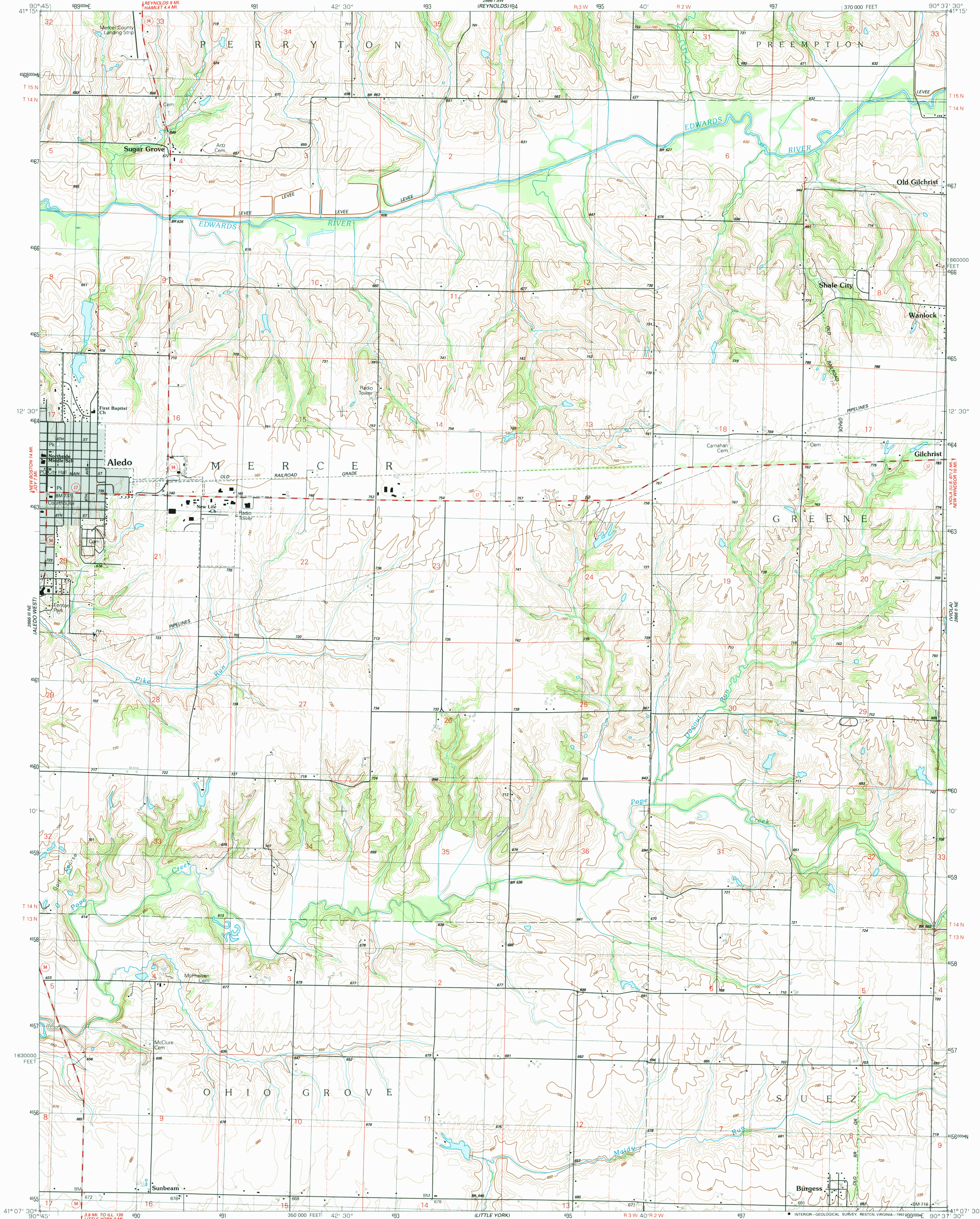


UNITED STATES
DEPARTMENT OF THE INTERIOR
GEOLOGICAL SURVEY

ALEDO EAST QUADRANGLE
ILLINOIS-MERCER CO.
7.5 MINUTE SERIES (TOPOGRAPHIC)
NW/4 ALEXIS 15' QUADRANGLE



Produced by the United States Geological Survey

Control by USGS and NOS/NOAA

Compiled from aerial photographs taken 1986

Field checked 1989. Map edited 1992

Projection and 10,000-foot grid ticks: Illinois coordinate

system, west zone (transverse Mercator)

1000-meter Universal Transverse Mercator grid, zone 15

1927 North American Datum

The difference between 1927 North American Datum and North

American Datum of 1983 (NAD 83) for 7.5-minute intersections

is given in USGS Bulletin 1875. The NAD 83 is shown by

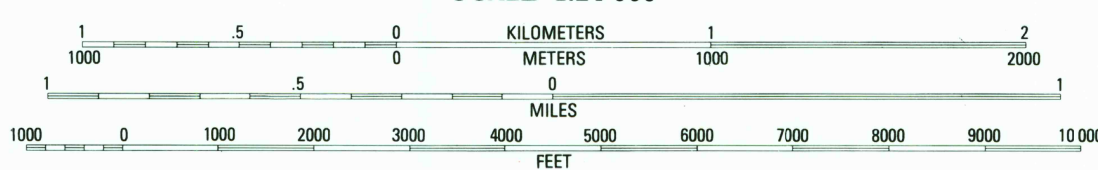
dashed corner ticks

Gray tint indicates area in which only landmark buildings are shown

Fine red dashed lines indicate selected fence and field lines where

generally visible on aerial photographs. This information is unchecked

SCALE 1:24 000



CONTOUR INTERVAL 10 FEET

NATIONAL GEODETIC VERTICAL DATUM OF 1929

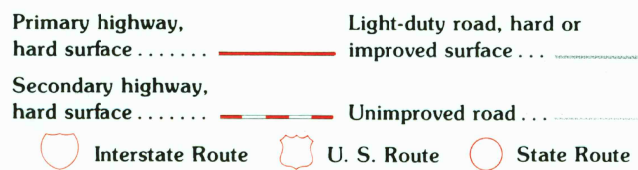
THIS MAP COMPLIES WITH NATIONAL MAP ACCURACY STANDARDS

FOR SALE BY U. S. GEOLOGICAL SURVEY, DENVER, COLORADO 80225, OR RESTON, VIRGINIA 22092

AND ILLINOIS GEOLOGICAL SURVEY, CHAMPAIGN, ILLINOIS 61820

A FOLDER DESCRIBING TOPOGRAPHIC MAPS AND SYMBOLS IS AVAILABLE ON REQUEST

ROAD CLASSIFICATION



ALEDO EAST, ILL.

NW/4 ALEXIS 15' QUADRANGLE

41090-B6-TF-024

1992

DMA 2866 II NW-SERIES V863

