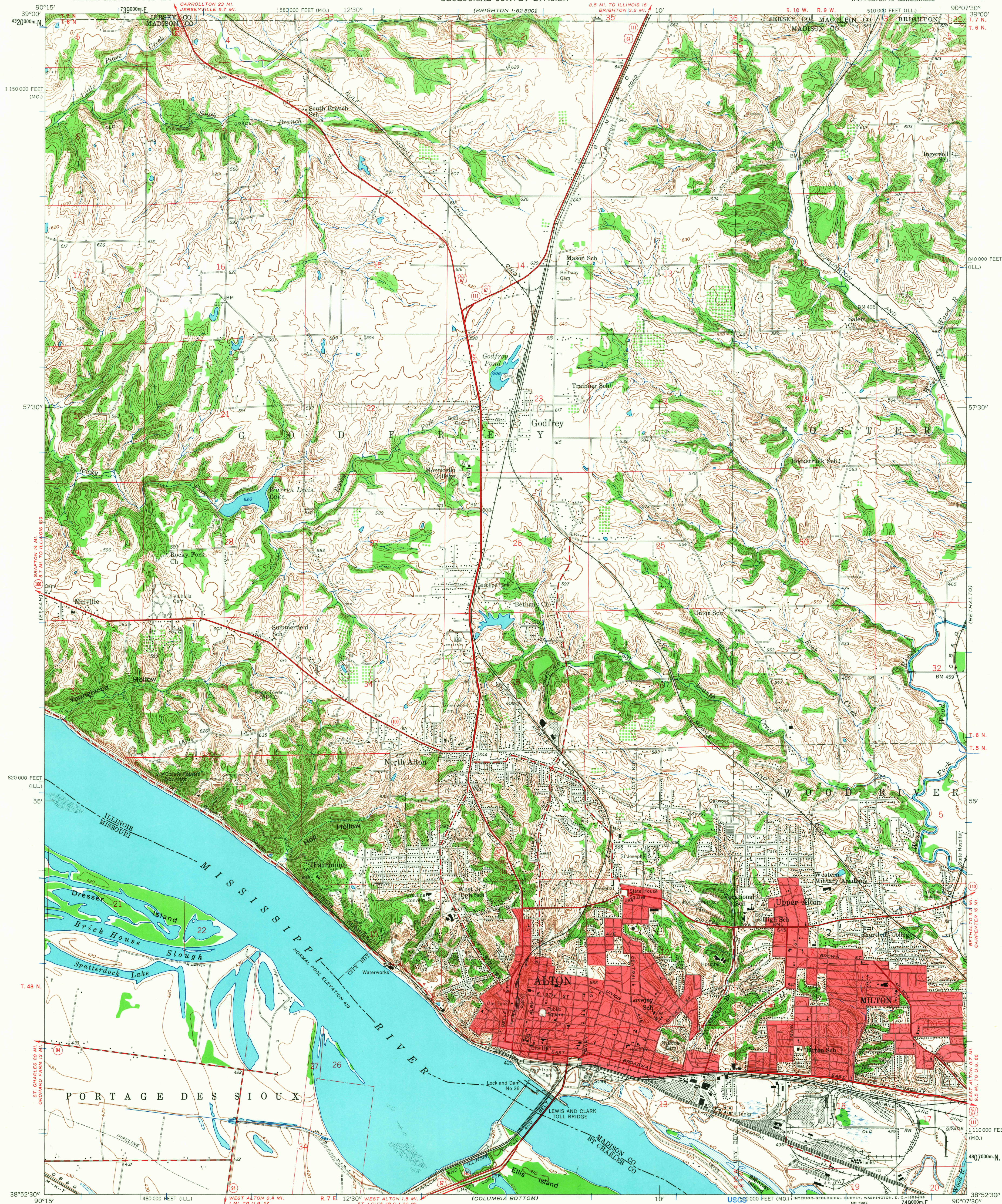


UNITED STATES  
DEPARTMENT OF THE INTERIOR  
GEOLOGICAL SURVEY

STATE OF ILLINOIS  
DEPARTMENT OF REGISTRATION AND EDUCATION  
GEOLOGICAL SURVEY DIVISION

ALTON QUADRANGLE  
ILLINOIS—MISSOURI  
7.5 MINUTE SERIES (TOPOGRAPHIC)  
NW 1/4 ALTON 15' QUADRANGLE



Mapped by the Geological Survey  
Revised by the Army Map Service  
Published for civil use by the Geological Survey  
Control by USGS, USC&GS, and Mississippi River Commission  
Topography from aerial photographs by multiplex methods and  
planimetric surveys by the Geological Survey 1947-1948  
Planimetric detail revised from aerial photographs taken 1952  
Field check 1954  
Polyconic projection. 1927 North American datum  
10,000-foot grids based on Illinois coordinate system, west zone  
and Missouri coordinate system, east zone  
1000-meter Universal Transverse Mercator grid ticks,  
zone 15, shown in blue  
Red tint indicates areas in which only landmark buildings are shown

5°  
TRUE NORTH  
MAGNETIC NORTH  
APPROXIMATE MEAN  
DECLINATION, 1954

SCALE 1:24 000  
CONTOUR INTERVAL 10 FEET  
DATUM IS MEAN SEA LEVEL  
THIS MAP COMPLIES WITH NATIONAL MAP ACCURACY STANDARDS  
FOR SALE BY U. S. GEOLOGICAL SURVEY, DENVER 25, COLORADO OR WASHINGTON 25, D. C.  
STATE GEOLOGICAL SURVEY, URBANA, ILLINOIS  
AND BY THE MISSOURI GEOLOGICAL SURVEY, ROLLA, MISSOURI  
A FOLDER DESCRIBING TOPOGRAPHIC MAPS AND SYMBOLS IS AVAILABLE ON REQUEST

USGS  
Historical File  
Topographic Division



ROAD CLASSIFICATION  
Heavy-duty ——— Light-duty ———  
Medium-duty ——— Unimproved dirt ———  
U. S. Route —○— State Route —○—

U.S.G.S.  
FILE COPY  
TOPOGRAPHIC DIVISION

ALTON, ILL.—MO.  
NW 1/4 ALTON 15' QUADRANGLE  
N 3852.5—W 9007.5/7.5  
1954

1375  
MAR 20 1968  
7/0