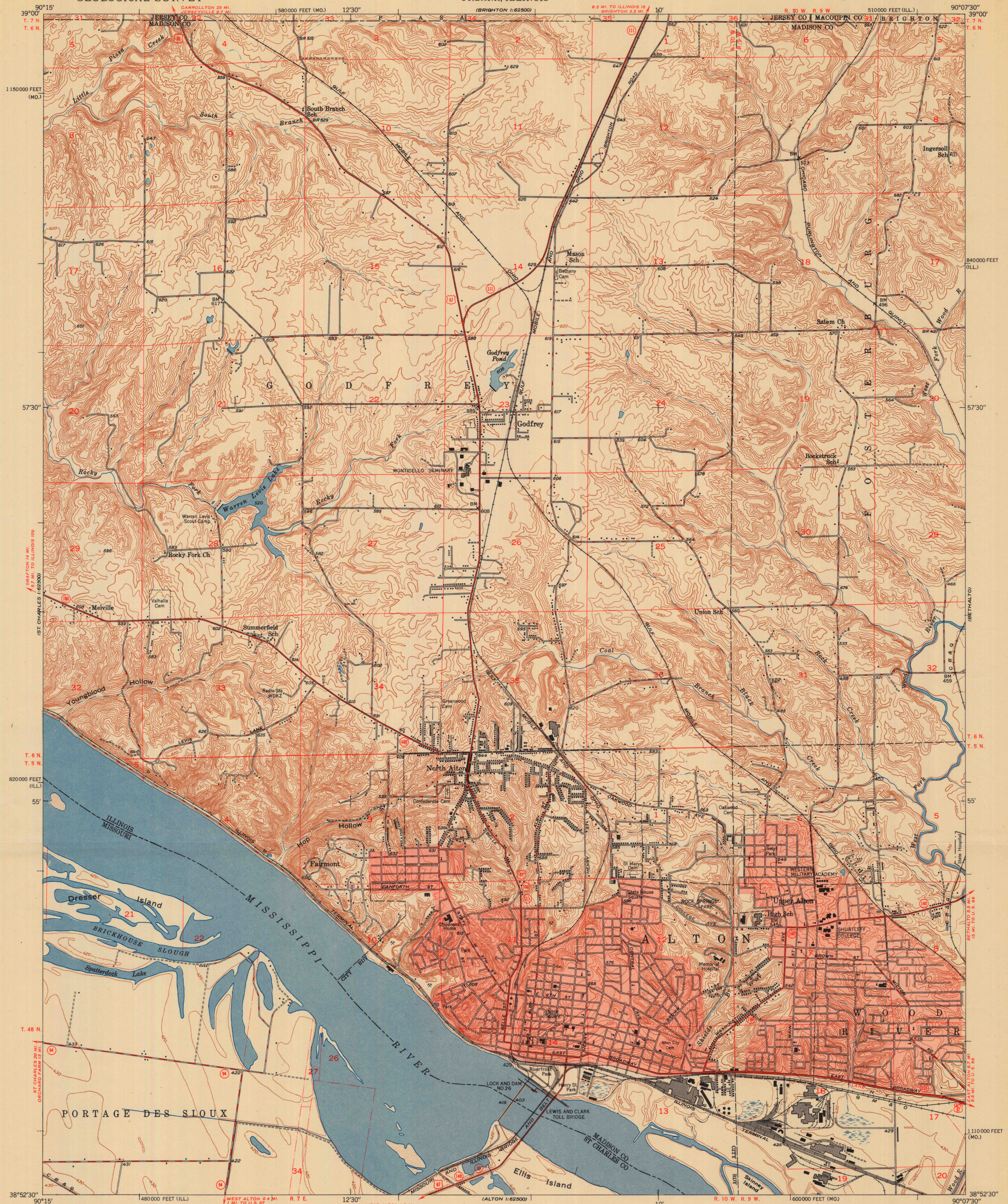


UNITED STATES
DEPARTMENT OF THE INTERIOR
GEOLOGICAL SURVEY

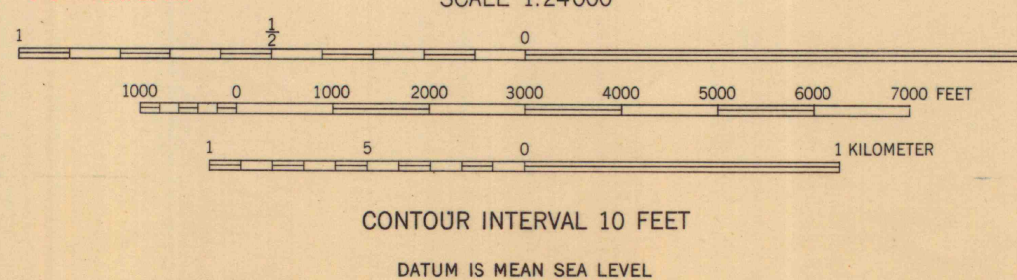
STATE OF ILLINOIS
ADLAI E. STEVENSON, GOVERNOR
DEPARTMENT OF REGISTRATION AND EDUCATION
NOBLE J. PUFFER, DIRECTOR
GEOLOGICAL SURVEY DIVISION, M. M. LEIGHTON, CHIEF
URBANA, ILLINOIS

ALTON QUADRANGLE
ILLINOIS-MISSOURI
7.5 MINUTE SERIES (TOPOGRAPHIC)
NW 1/4 ALTON 15' QUADRANGLE



Mapped, edited, and published by the Geological Survey
Control by Mississippi River Commission,
USGS and USC&GS
Topography by multiplex methods from aerial photographs
taken 1945, and by plane-table surveys 1947-1948
Field check 1947-1948
Polyconic projection. 1927 North American datum
10,000-foot grids based on Illinois coordinate system,
west zone and Missouri coordinate system, east zone
Red tint indicates areas in which only
landmark buildings are shown

TRUE NORTH
MAGNETIC NORTH
APPROXIMATE MEAN
DECLINATION, 1948



THIS MAP COMPLIES WITH NATIONAL MAP ACCURACY STANDARDS
FOR SALE BY U. S. GEOLOGICAL SURVEY, WASHINGTON 25, D. C.
AND BY THE STATE GEOLOGICAL SURVEY, URBANA, ILLINOIS
A FOLDER DESCRIBING TOPOGRAPHIC MAPS AND SYMBOLS IS AVAILABLE ON REQUEST

ROAD CLASSIFICATION
HARD-SURFACE ALL WEATHER ROADS DRY WEATHER ROADS
Heavy-duty... 3 LANE LANE Improved dirt...
Medium-duty... 2 LANE LANE Unimproved dirt...
Loose-surface, graded, or narrow hard-surface...
U. S. Route State Route

UNIVERSITY OF WISCONSIN
Department of Geography

ALTON, ILL.-MO.
NW 1/4 ALTON 15' QUADRANGLE
N3852.5-W9007.5/7.5

EDITION OF 1950