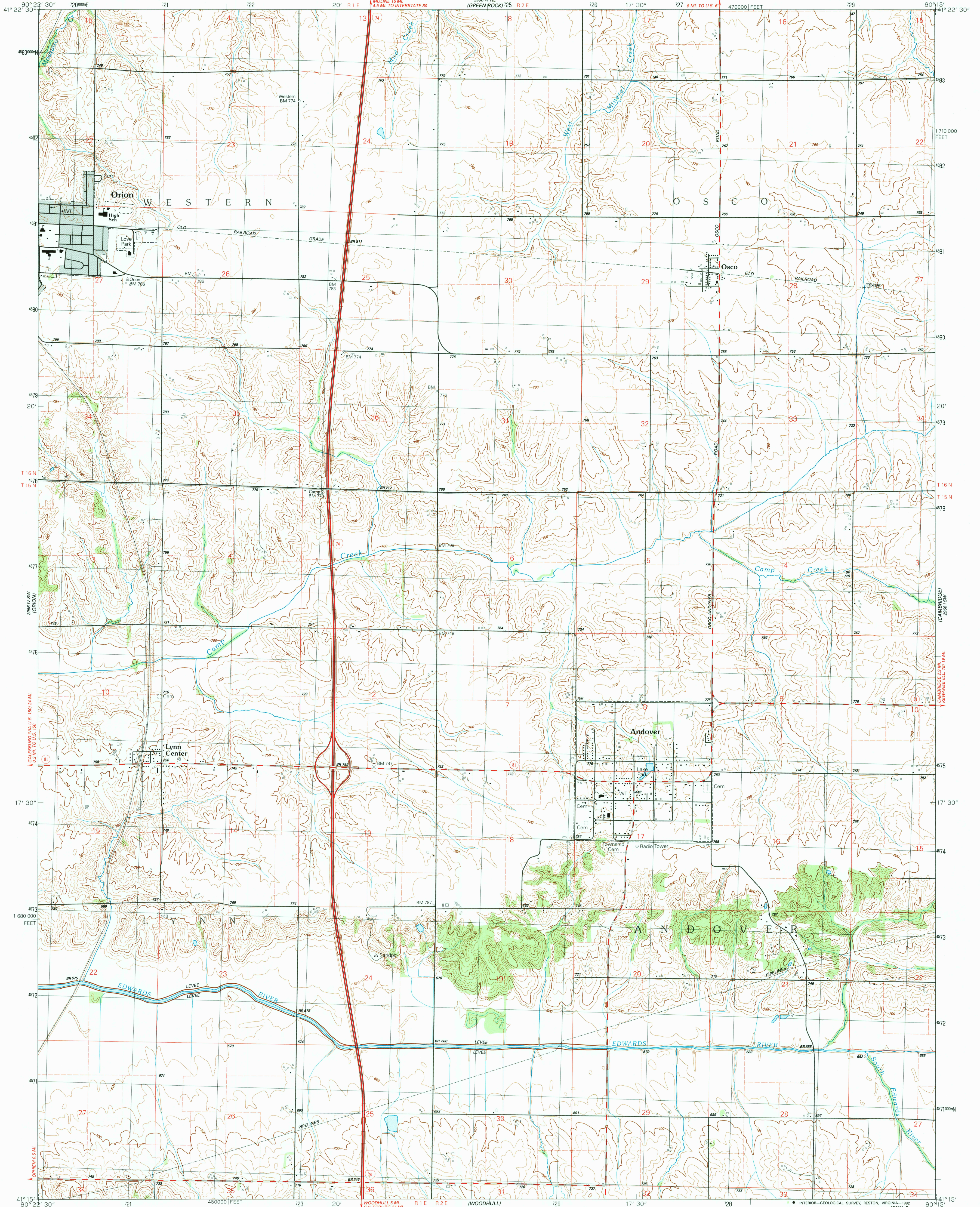


UNITED STATES  
DEPARTMENT OF THE INTERIOR  
GEOLOGICAL SURVEY

ANDOVER QUADRANGLE  
ILLINOIS-HENRY CO.  
7.5 MINUTE SERIES (TOPOGRAPHIC)



Produced by the United States Geological Survey

Control by USGS and NOS/NOAA

Compiled from aerial photographs taken 1986

Field checked 1989. Map edited 1991

Projection and 10,000-foot grid ticks: Illinois coordinate

system, west zone (transverse Mercator)

1000-meter Universal Transverse Mercator grid, zone 15

1927 North American Datum

The difference between 1927 North American Datum and North

American Datum of 1983 (NAD 83) for 7.5-minute intersections

is given in USGS Bulletin 1875. The NAD 83 is shown by

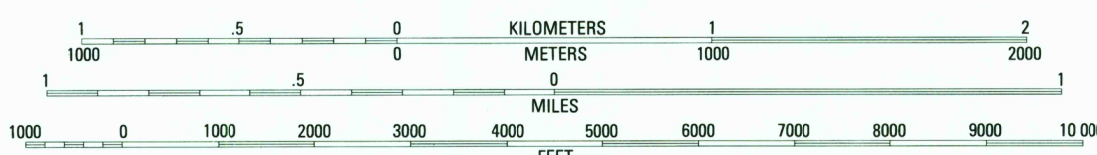
dashed corner ticks

Gray tint indicates area in which only landmark buildings are shown

Fine red dashed lines indicate selected fence and field lines where

generally visible on aerial photographs. This information is unchecked

SCALE 1:24 000

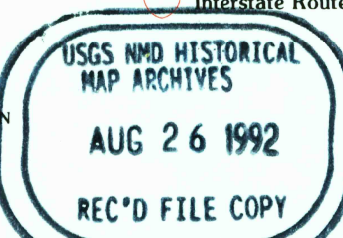


CONTOUR INTERVAL 10 FEET  
NATIONAL GEODETIC VERTICAL DATUM OF 1929

THIS MAP COMPLIES WITH NATIONAL MAP ACCURACY STANDARDS  
FOR SALE BY U. S. GEOLOGICAL SURVEY, DENVER, COLORADO 80225, OR RESTON, VIRGINIA 22092  
AND ILLINOIS GEOLOGICAL SURVEY, CHAMPAIGN, ILLINOIS 61820  
A FOLDER DESCRIBING TOPOGRAPHIC MAPS AND SYMBOLS IS AVAILABLE ON REQUEST

ROAD CLASSIFICATION

Primary highway, hard surface .....  
Secondary highway, hard surface .....  
Unimproved road .....  
Interstate Route .....  
U. S. Route .....  
State Route .....



ANDOVER, ILL.  
41090-C3-TF-024

1991

DMA 2966 IV SE-SERIES V863