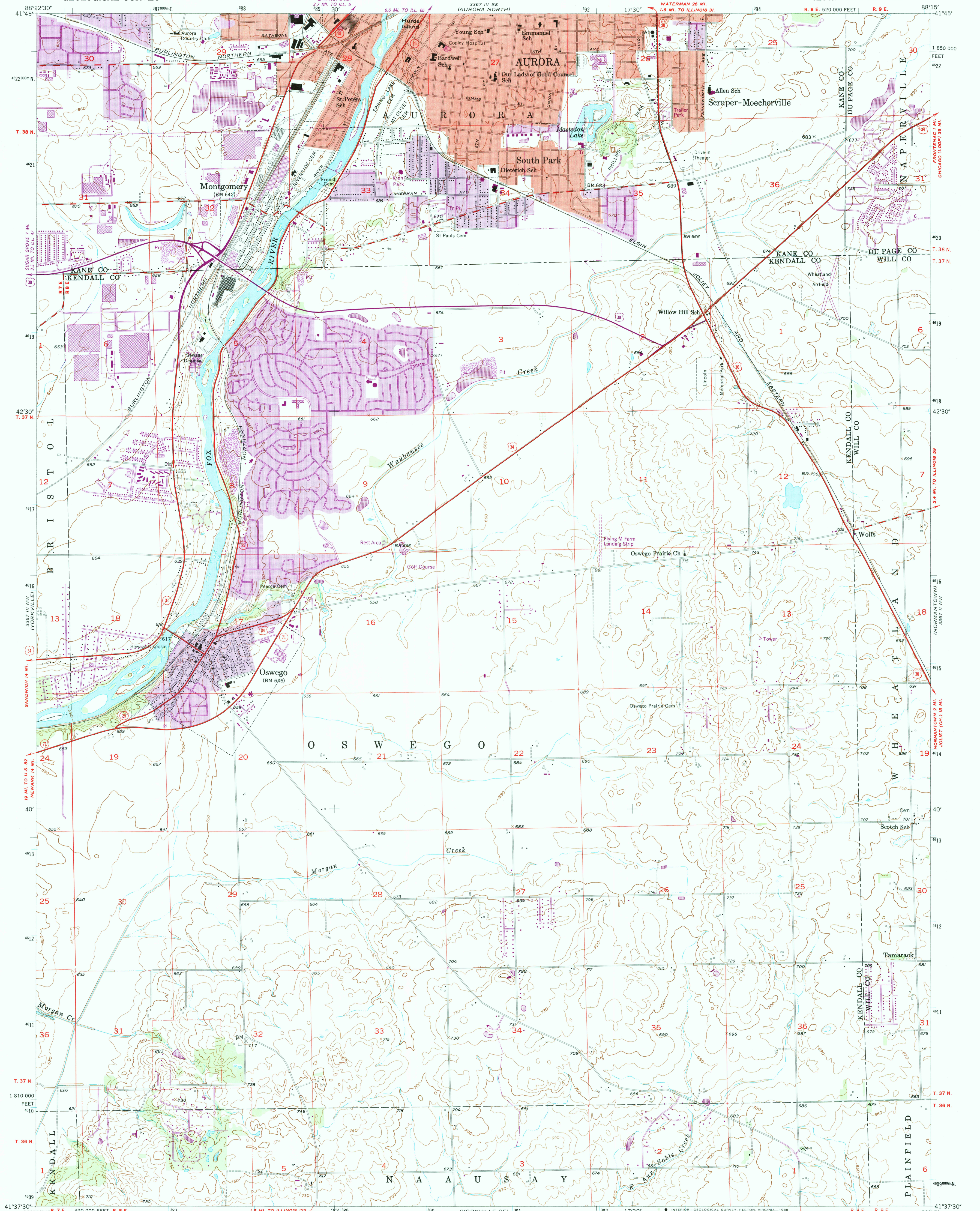


UNITED STATES
DEPARTMENT OF THE INTERIOR
GEOLOGICAL SURVEY

AURORA SOUTH QUADRANGLE
ILLINOIS
7.5 MINUTE SERIES (TOPOGRAPHIC)
NE/4 YORKVILLE 15' QUADRANGLE



Mapped, edited, and published by the Geological Survey

Control by USGS and USC&GS

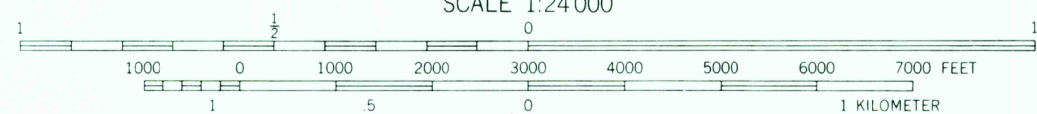
Topography by Kelsh plotter from aerial photographs
taken 1952 and by planetable surveys 1954

Polyconic projection. 1927 North American datum
10,000-foot grid based on Illinois coordinate system, east zone
1000-meter Universal Transverse Mercator grid ticks,
zone 16, shown in blue

Red tint indicates areas in which only landmark buildings are shown

To place on the predicted North American Datum 1983
move the projection lines 2 meters north and
6 meters east as shown by dashed corner ticks

UTM GRID and 1980 MAGNETIC NORTH
DECLINATION AT CENTER OF SHEET



CONTOUR INTERVAL 10 FEET
NATIONAL GEODETIC VERTICAL DATUM OF 1929

THIS MAP COMPLIES WITH NATIONAL MAP ACCURACY STANDARDS
FOR SALE BY U.S. GEOLOGICAL SURVEY
DENVER, COLORADO 80225, OR RESTON, VIRGINIA 22092
AND ILLINOIS GEOLOGICAL SURVEY, CHAMPAIGN, ILLINOIS 61820
A FOLDER DESCRIBING TOPOGRAPHIC MAPS AND SYMBOLS IS AVAILABLE ON REQUEST



QUADRANGLE LOCATION

Revisions shown in purple compiled from aerial photographs
taken 1973 and 1978. Map edited 1980
This information not field checked
Purple tint indicates extension of urban area

ROAD CLASSIFICATION	
Primary highway, hard surface	Light-duty road, hard or improved surface
Secondary highway, hard surface	Unimproved road
Interstate Route	U.S. Route
	State Route

AURORA SOUTH, ILL.
NE/4 YORKVILLE 15' QUADRANGLE
41088-F3-TF-024

1954

PHOTOREVISED 1973 AND 1980
DMA 3367 III NE--SERIES V863