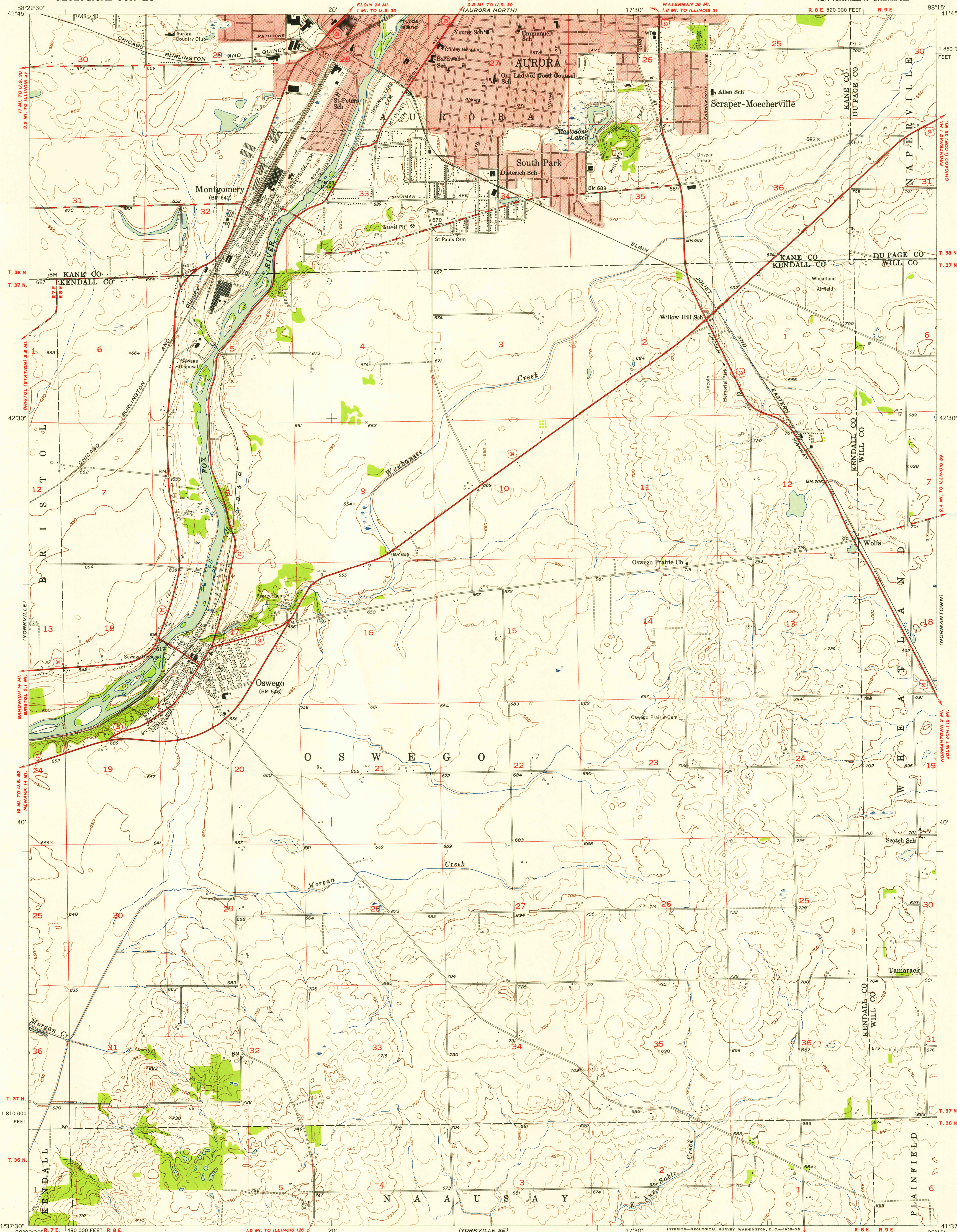


UNITED STATES  
DEPARTMENT OF THE INTERIOR  
GEOLOGICAL SURVEY

AURORA SOUTH QUADRANGLE  
ILLINOIS  
7.5 MINUTE SERIES (TOPOGRAPHIC)  
NE 1/4 YORKVILLE 15' QUADRANGLE



U.S.G.S.  
FILE COPY  
TOPOGRAPHIC DIVISION

U.S.G.S.  
FILE COPY  
TOPOGRAPHIC DIVISION

Mapped, edited, and published by the Geological Survey

Control by USGS and USC&GS

Topography from aerial photographs by Kelsh plotter

and by plane-table surveys 1954. Aerial photographs taken 1952

Polyconic projection. 1927 North American datum

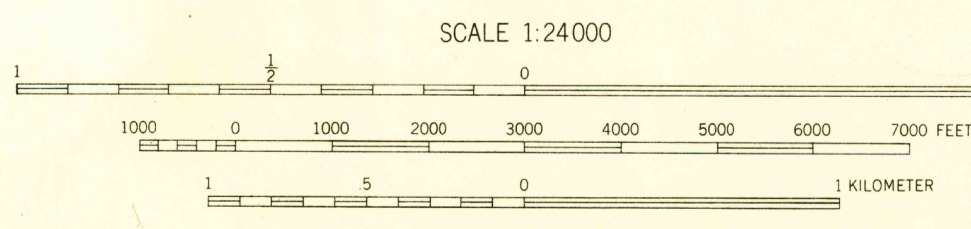
10,000-foot grid based on Illinois coordinate system,

east zone

Red tint indicates areas in which only

landmark buildings are shown

TRUE NORTH  
MAGNETIC NORTH  
APPROXIMATE MEAN  
DECLINATION, 1954



USGS  
Historical File  
Topographic Division



ROAD CLASSIFICATION  
Heavy-duty 4 LANE 16 LANE Light-duty  
Medium-duty 4 LANE 16 LANE Unimproved dirt  
U. S. Route State Route

AURORA SOUTH, ILL.  
NE 1/4 YORKVILLE 15' QUADRANGLE  
N4137.5-W8815/7.5

1954

SEP 19 1955