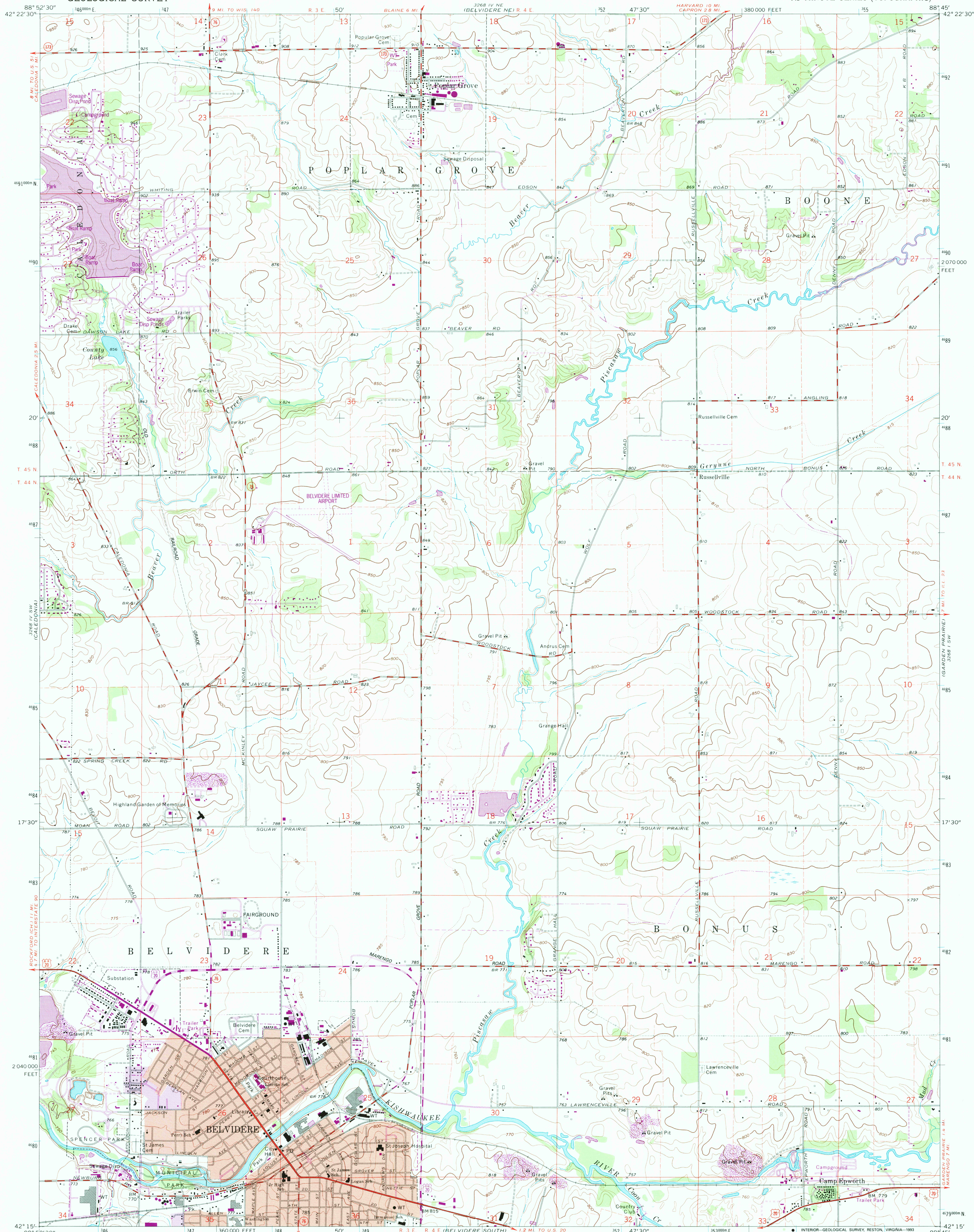


UNITED STATES
DEPARTMENT OF THE INTERIOR
GEOLOGICAL SURVEY

BELVIDERE NORTH QUADRANGLE
ILLINOIS—BOONE CO.
7.5 MINUTE SERIES (TOPOGRAPHIC)



Produced by the United States Geological Survey

Control by USGS and NOS/NOAA

Topography by photogrammetric methods from aerial photographs taken 1966. Field checked 1970

Projection and 10,000-foot grid ticks: Illinois coordinate system, east zone (transverse Mercator)
1000-meter Universal Transverse Mercator grid ticks, zone 16, shown in blue
1927 North American Datum (NAD 27)

North American Datum of 1983 (NAD 83) is shown by dashed corner ticks
The values of the shift between NAD 27 and NAD 83 for 7.5-minute intersections are given in USGS Bulletin 1875

Red tint indicates areas in which only landmark buildings are shown

Fine red dashed lines indicate selected fence and field lines where generally visible on aerial photographs. This information is unchecked

Purple tint indicates extension of urban areas

THIS MAP COMPLIES WITH NATIONAL MAP ACCURACY STANDARDS
FOR SALE BY U. S. GEOLOGICAL SURVEY, DENVER, COLORADO 80225, OR RESTON, VIRGINIA 22092
AND ILLINOIS GEOLOGICAL SURVEY, CHAMPAIGN, ILLINOIS 61820
A FOLDER DESCRIBING TOPOGRAPHIC MAPS AND SYMBOLS IS AVAILABLE ON REQUEST

Revisions shown in purple compiled from aerial photographs taken 1992 and other sources. This information not field checked. Map edited 1993
Information shown in purple may not meet USGS content standards and may conflict with previously mapped contours

BELVIDERE NORTH, ILL.
42088-C7-TF-024

1970
REVISED 1993
DMA 3268 IV SE-SERIES V863

