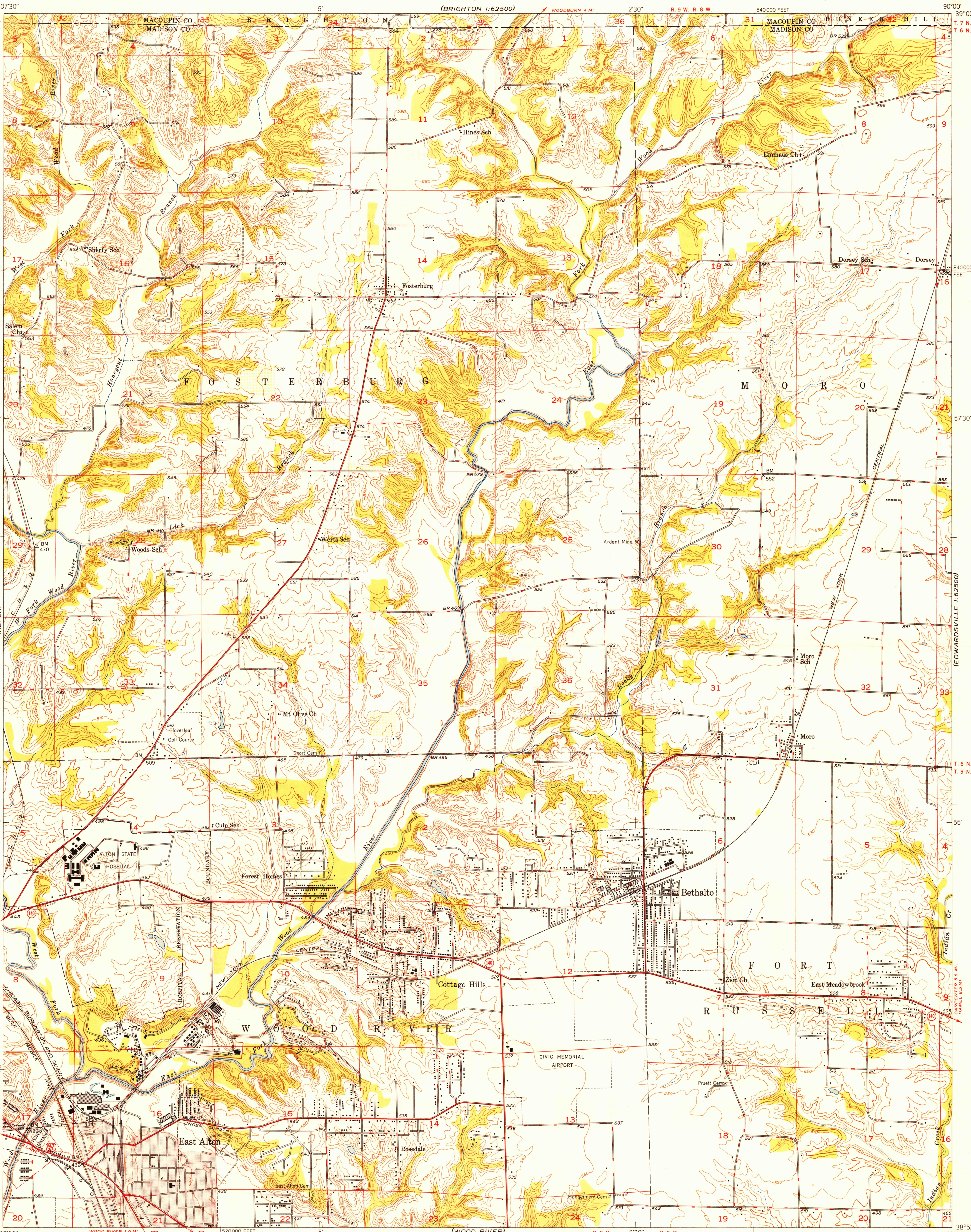


UNITED STATES  
DEPARTMENT OF THE INTERIOR  
GEOLOGICAL SURVEY

STATE OF ILLINOIS  
ADLAI E. STEVENSON, GOVERNOR  
DEPARTMENT OF REGISTRATION AND EDUCATION  
NOBLE J. PUFFER, DIRECTOR  
GEOLOGICAL SURVEY DIVISION, M. M. LEIGHTON, CHIEF  
URBANA, ILLINOIS  
(BRIGHTON 1:62500)

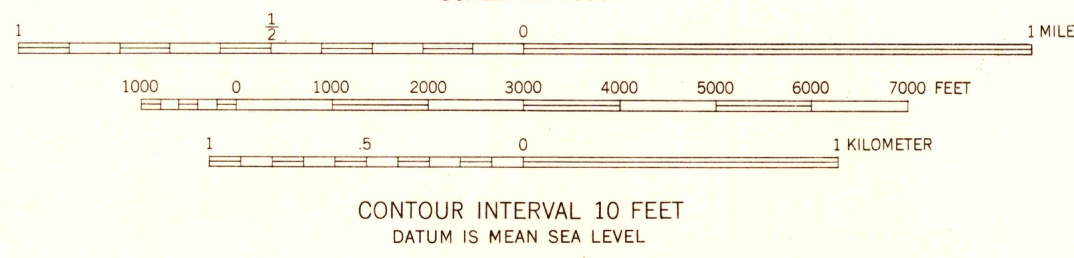
BETHALTO QUADRANGLE  
ILLINOIS  
7.5 MINUTE SERIES (TOPOGRAPHIC)  
NE 1/4 ALTON 15' QUADRANGLE



U.S.G.S.  
FILE COPY  
Inspection and Editing

U.S.G.S.  
FILE COPY  
Inspection and Editing

Mapped, edited, and published by the Geological Survey  
Control by USGS and USC&GS  
Topography by multiplex methods from aerial photographs  
taken 1946, and by plane-table surveys 1947-1948  
Field check 1949  
Polyconic projection. 1927 North American datum  
10,000-foot grid based on Illinois coordinate system,  
west zone  
Red tint indicates area in which only  
landmark buildings are shown



USGS  
Historical File  
Topographic Division

ROAD CLASSIFICATION  
HARD-SURFACE ALL WEATHER ROADS DRY WEATHER ROADS  
Heavy-duty... 4 LANE LANE Improved dirt...  
Medium-duty... 4 LANE LANE Unimproved dirt...  
Loose-surface, graded, or narrow hard-surface...  
U. S. Route State Route

U.S.G.S.  
FILE COPY  
Inspection and Editing

BETHALTO, ILL.  
NE 1/4 ALTON 15' QUADRANGLE  
N3852.5-W9000/7.5

EDITION OF 1949  
NOV 9 1949

THIS MAP COMPLIES WITH NATIONAL MAP ACCURACY STANDARDS  
FOR SALE BY U. S. GEOLOGICAL SURVEY, WASHINGTON 25, D. C.  
AND BY THE STATE GEOLOGICAL SURVEY, URBANA, ILLINOIS

2140