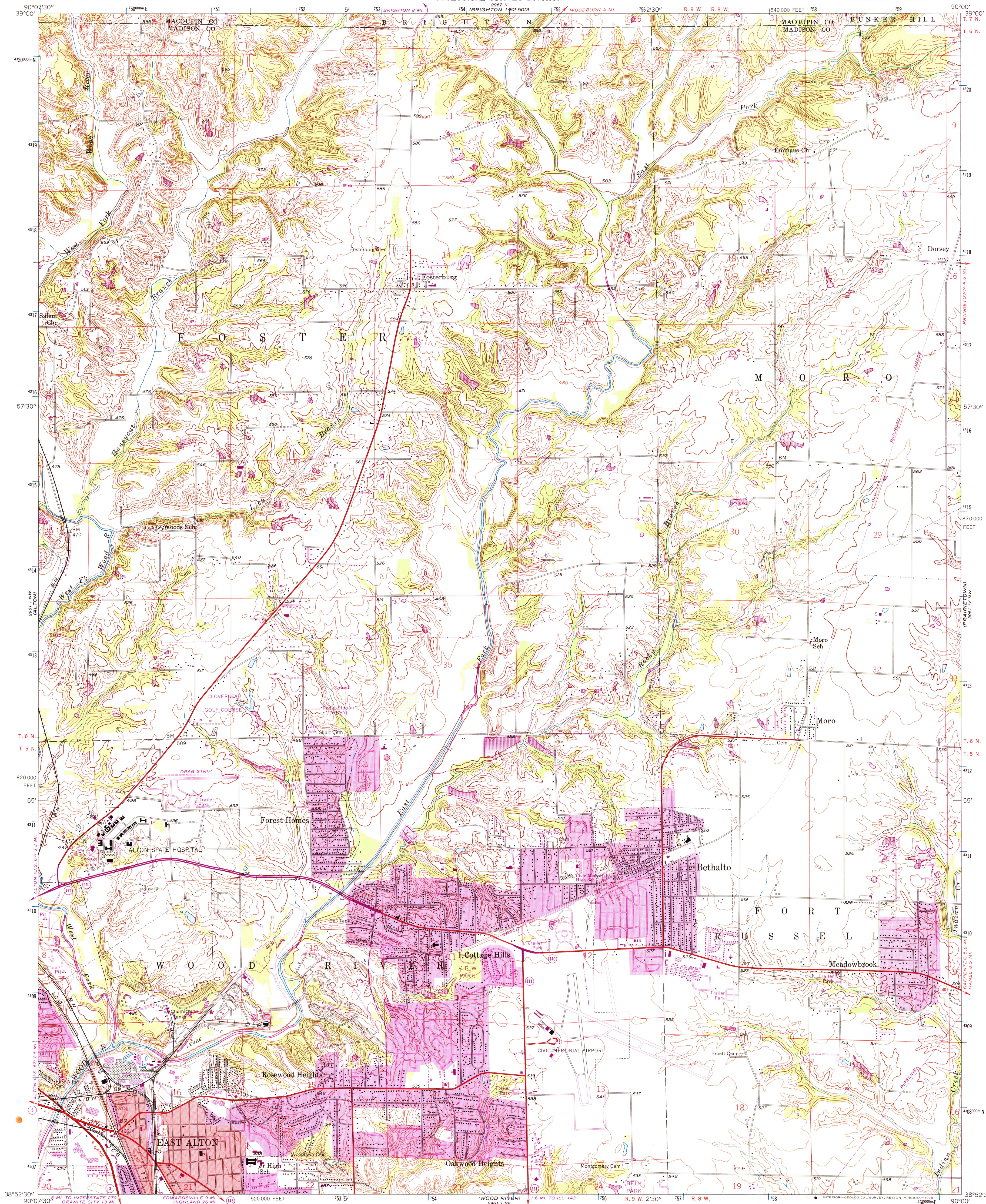


UNITED STATES
DEPARTMENT OF THE INTERIOR
GEOLOGICAL SURVEY

STATE OF ILLINOIS
DEPARTMENT OF REGISTRATION AND EDUCATION
GEOLOGICAL SURVEY DIVISION

BETHALTO QUADRANGLE
ILLINOIS
7.5 MINUTE SERIES (TOPOGRAPHIC)
NE 1/4 ALTON 15' QUADRANGLE

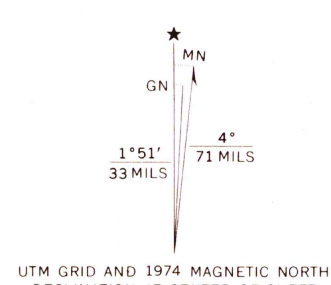


Mapped by the Geological Survey
Revised by the Army Map Service
Published for civil use by the Geological Survey
Control by USGS and USC&GS

Topography from aerial photographs by multiplex methods and
planimetric surveys by the Geological Survey 1947-1948
Planimetric detail revised from aerial photographs
taken 1952. Field check 1953-1954

Polyconic projection. 1927 North American datum
10,000-foot grid based on Illinois coordinate system, west zone
1000-meter Universal Transverse Mercator grid ticks,
zone 15, shown in blue

Red tint indicates areas in which only landmark buildings are shown



CONTOUR INTERVAL 10 FEET
NATIONAL GEODETIC VERTICAL DATUM OF 1929

THIS MAP COMPLIES WITH NATIONAL MAP ACCURACY STANDARDS
FOR SALE BY U. S. GEOLOGICAL SURVEY, RESTON, VIRGINIA 22092
AND BY THE STATE GEOLOGICAL SURVEY, URBANA, ILLINOIS 61801
A FOLDER DESCRIBING TOPOGRAPHIC MAPS AND SYMBOLS IS AVAILABLE ON REQUEST

Revisions shown in purple compiled by the Geological
Survey from aerial photographs taken 1968 and 1974
This information not field checked
Purple tint indicates extension of urban areas

ROAD CLASSIFICATION
Heavy-duty ——— Light-duty ———
Medium-duty ——— Unimproved dirt ———
State Route —○—

USGS
HISTORICAL FILE
TOPOGRAPHIC DIVISION

BETHALTO, ILL.
NE 1/4 ALTON 15' QUADRANGLE
N 3852.5—W 9000/7.5
1954
PHOTOREVISED 1968 AND 1974
AMS 2961 I NE—SERIES V865

OCT 30 1975