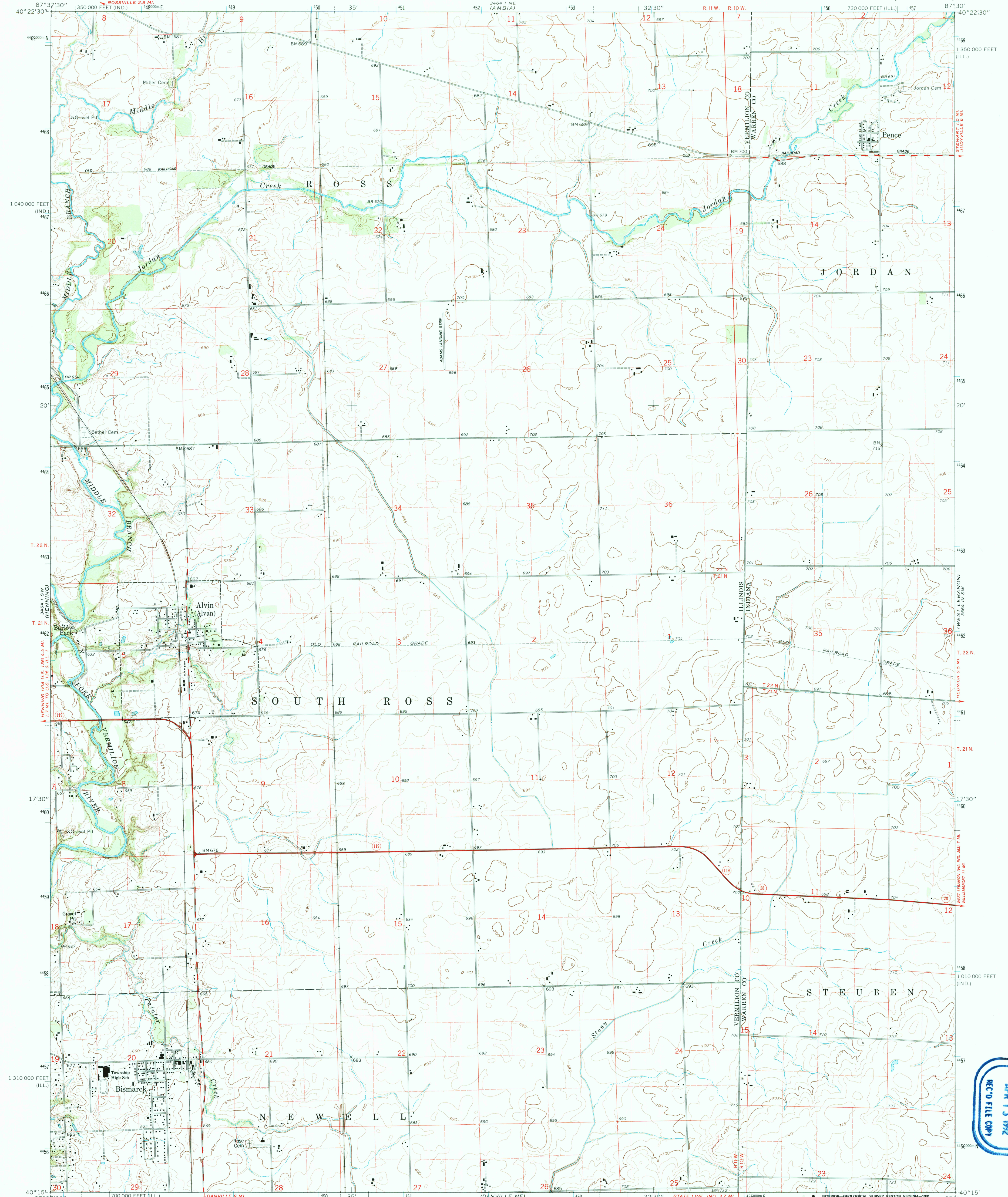
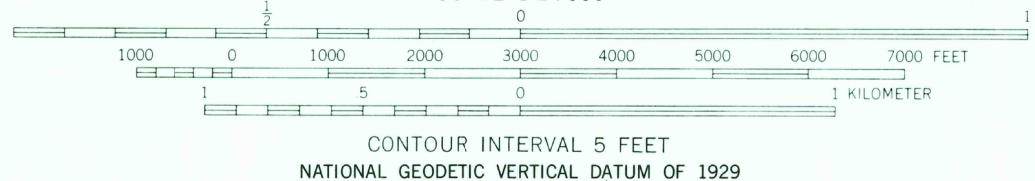
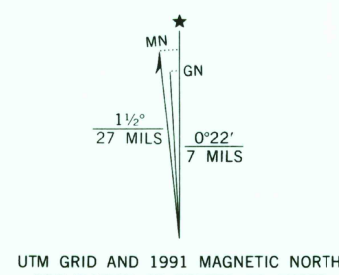


UNITED STATES
DEPARTMENT OF THE INTERIOR
GEOLOGICAL SURVEY

BISMARCK QUADRANGLE
ILLINOIS-INDIANA
7.5 MINUTE SERIES (TOPOGRAPHIC)



Mapped, edited, and published by the Geological Survey
Control by USGS and USC&GS
Topography by photogrammetric methods from aerial
photographs taken 1963 and planetable surveys 1964
Polyconic projection. 1927 North American datum
10,000-foot grids based on Illinois coordinate system, east zone
and Indiana coordinate system, west zone
1000-meter Universal Transverse Mercator grid ticks,
zone 16, shown in blue
To place on the predicted North American Datum 1983
move the projection lines 3 meters east as shown by
dashed corner ticks
Fine red dashed lines indicate selected fence and field lines where
generally visible on aerial photographs. This information is unchecked



THIS MAP COMPLIES WITH NATIONAL MAP ACCURACY STANDARDS
FOR SALE BY U.S. GEOLOGICAL SURVEY, DENVER, COLORADO 80225 OR RESTON, VIRGINIA 22092,
ILLINOIS GEOLOGICAL SURVEY, CHAMPAIGN, ILLINOIS 61820,
AND INDIANA DEPARTMENT OF NATURAL RESOURCES, INDIANAPOLIS, INDIANA 46204
A FOLDER DESCRIBING TOPOGRAPHIC MAPS AND SYMBOLS IS AVAILABLE ON REQUEST

Revisions compiled in cooperation with State
of Indiana agencies from aerial photographs
taken 1987 and other sources. Contours not
revised. This information not field checked
Map edited 1991



ROAD CLASSIFICATION	
Heavy-duty	Light-duty
Medium-duty	Unimproved dirt
State Route	

BISMARCK, ILL.-IND.
40087-C5-TF-024

1964
REVISED 1991
DMA 3464 1 SE-SERIES V863

