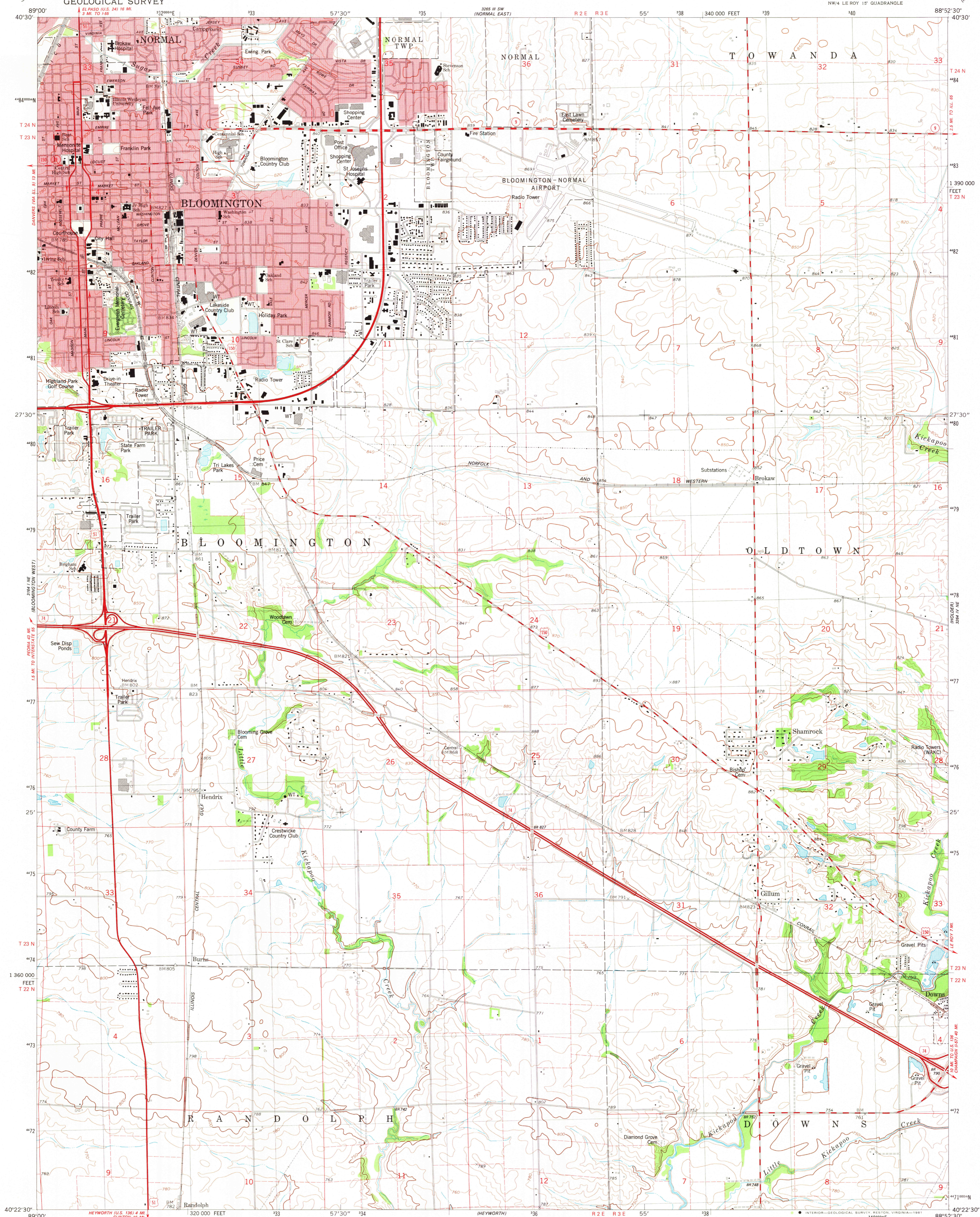


UNITED STATES
DEPARTMENT OF THE INTERIOR
GEOLOGICAL SURVEY

BLOOMINGTON EAST QUADRANGLE
ILLINOIS-MCLEAN CO.
7.5 MINUTE SERIES (TOPOGRAPHIC)



Mapped, edited, and published by the Geological Survey

Control by USGS and NOS/NOAA

Topography by photogrammetric methods from aerial photographs taken 1975. Field checked 1977. Map edited 1981

Projection and 10,000-foot grid ticks: Illinois coordinate system, east zone (transverse Mercator)

1000-meter Universal Transverse Mercator grid, zone 16

1927 North American Datum

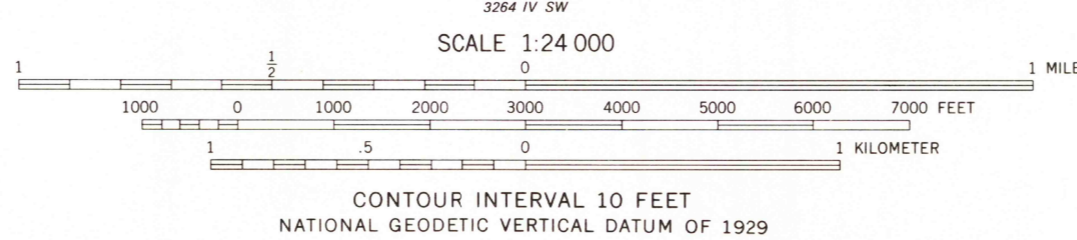
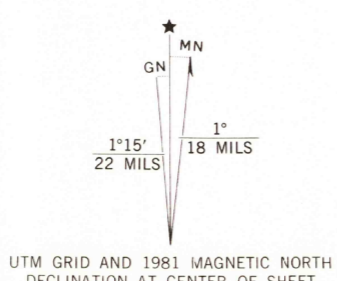
To place on the predicted North American Datum 1983

move the projection lines 6 meters east as shown by dashed corner ticks

Red tint indicates areas in which only landmark buildings are shown

City of Bloomington and Bloomington City Township are coextensive

Fine red dashed lines indicate selected fence and field lines where generally visible on aerial photographs. This information is unchecked



ROAD CLASSIFICATION	
Primary highway, hard surface	Light-duty road, hard or improved surface
Secondary highway, hard surface	Unimproved road
Interstate Route	U.S. Route
	State Route

BLOOMINGTON EAST, ILL.

NW 1/4 LE ROY 15' QUADRANGLE

N4022.5-W8852.5/7.5

1981

DMA 3264 IV NW-SERIES V863

NOV 20 1981

2050