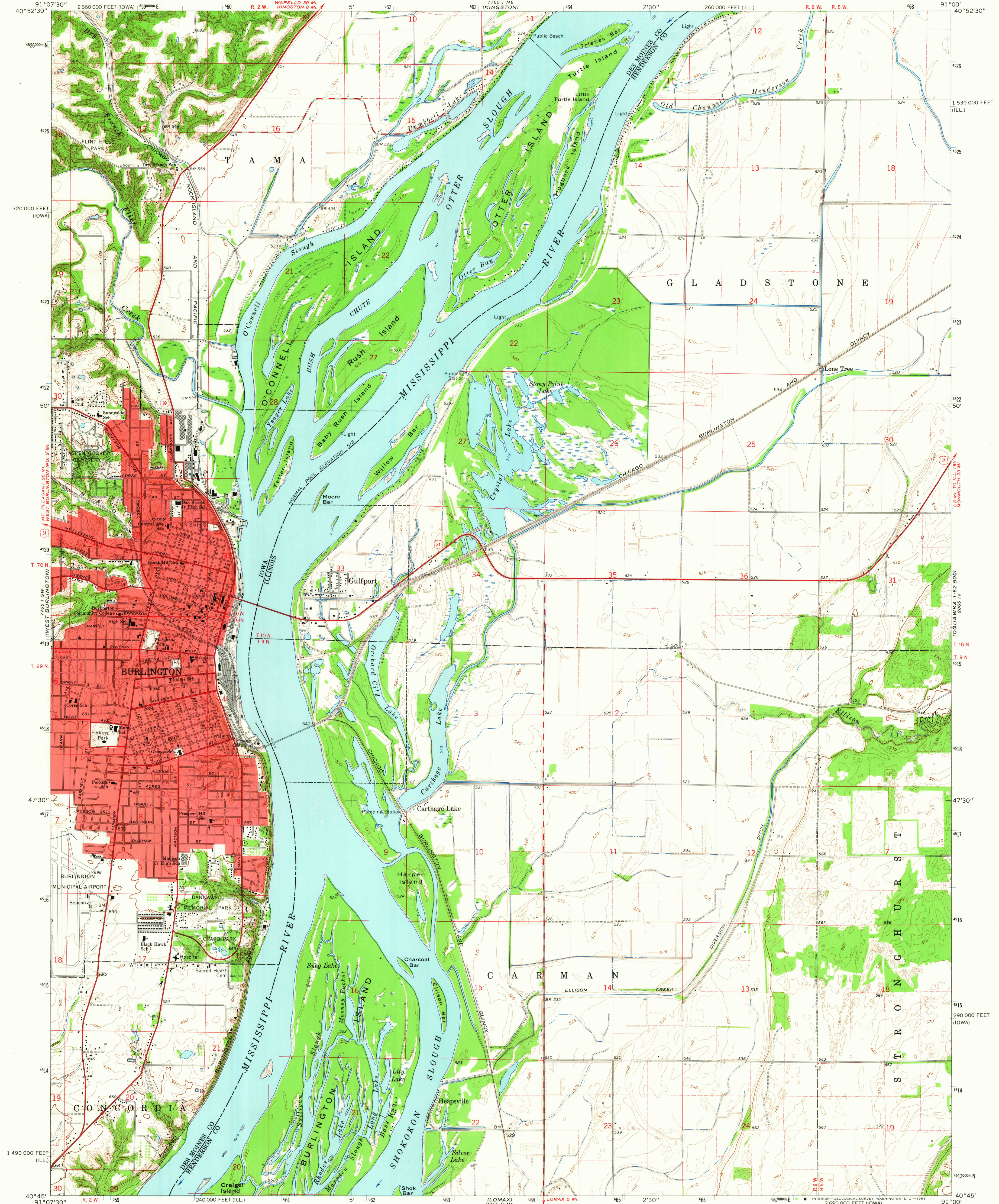
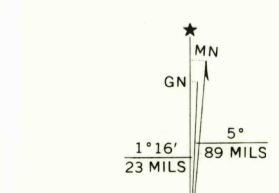


UNITED STATES
DEPARTMENT OF THE INTERIOR
GEOLOGICAL SURVEY

BURLINGTON QUADRANGLE
ILLINOIS-IOWA
7.5 MINUTE SERIES (TOPOGRAPHIC)
SE/4 BURLINGTON 15' QUADRANGLE



Mapped, edited, and published by the Geological Survey
Control by USGS and USC&GS
Topography by photogrammetric methods from aerial
photographs taken 1962 and planetable surveys 1964
Polyconic projection. 1927 North American datum
10,000-foot grids based on Illinois coordinate system, west zone, and
Iowa coordinate system, south zone
1000-meter Universal Transverse Mercator grid ticks,
zone 15, shown in blue
Red tint indicates area in which only landmark buildings are shown
Fine red dashed lines indicate selected fence and field lines where
generally visible on aerial photographs. This information is unchecked



SCALE 1:24,000
1 000 2000 3000 4000 5000 6000 7000 FEET
1 KILOMETER
CONTOUR INTERVAL 10 FEET
DOTTED LINES REPRESENT 5-FOOT CONTOURS
DATUM IS MEAN SEA LEVEL

THIS MAP COMPLIES WITH NATIONAL MAP ACCURACY STANDARDS
FOR SALE BY U.S. GEOLOGICAL SURVEY, DENVER, COLORADO 80225 OR WASHINGTON, D.C. 20242,
STATE GEOLOGICAL SURVEY, URBANA, ILLINOIS,
AND IOWA GEOLOGICAL SURVEY, IOWA CITY, IOWA
A FOLDER DESCRIBING TOPOGRAPHIC MAPS AND SYMBOLS IS AVAILABLE ON REQUEST

USGS
Historical File
Topographic Division



ROAD CLASSIFICATION
Heavy-duty Light-duty
Medium-duty Unimproved dirt
U.S. Route State Route

U.S.G.S. BURLINGTON, ILL.-IOWA
SE/4 BURLINGTON 15' QUADRANGLE
N4045-W9100/7.5

TOPOGRAPHIC DIVISION
AMS 7765 I SE-SERIES V876

1964

2600
FEB 18 1960