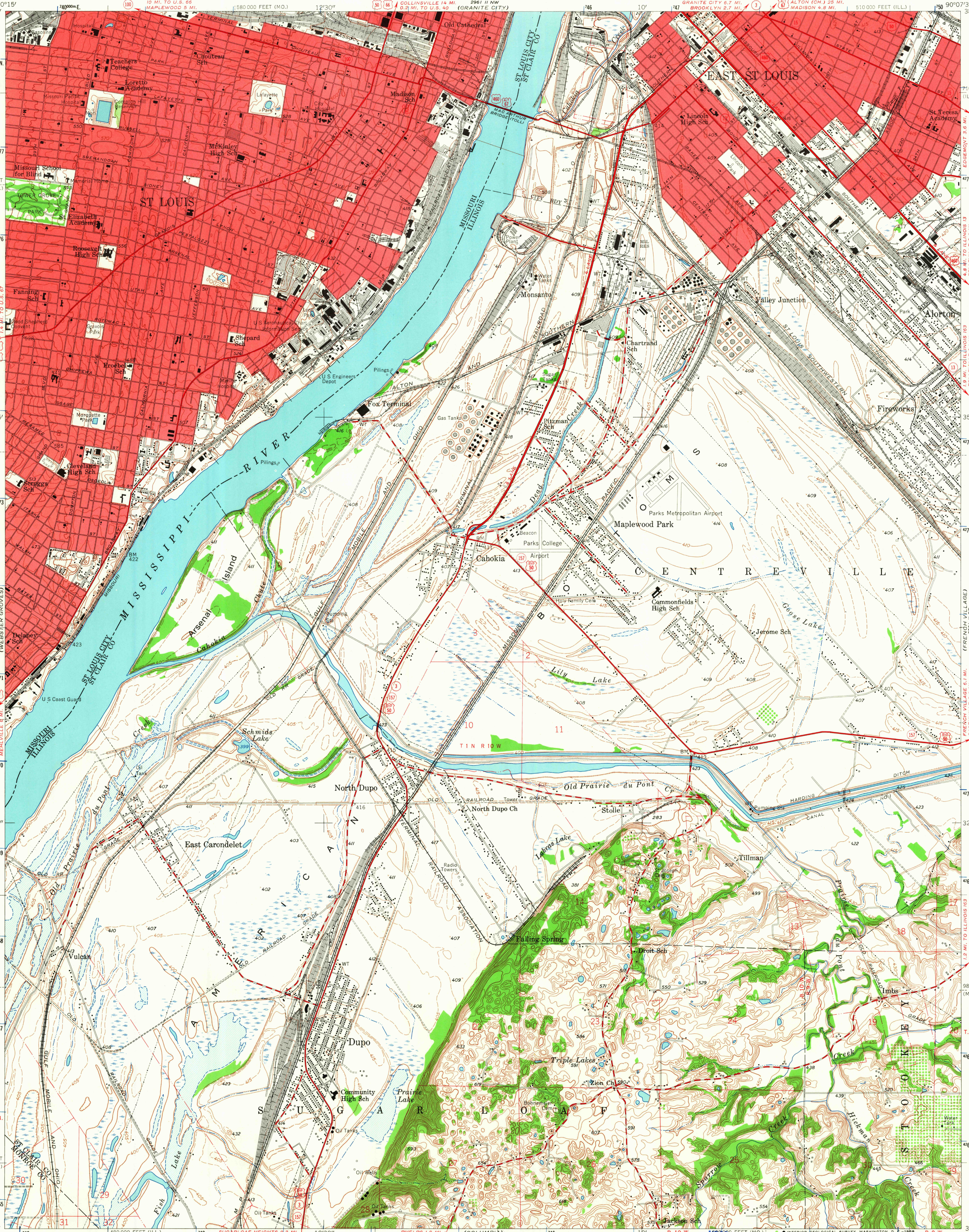


UNITED STATES  
DEPARTMENT OF THE INTERIOR  
GEOLOGICAL SURVEY

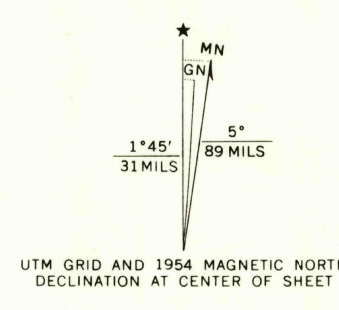
STATE OF MISSOURI  
GEOLOGICAL SURVEY AND WATER RESOURCES

STATE OF ILLINOIS  
DEPARTMENT OF REGISTRATION AND EDUCATION  
GEOLOGICAL SURVEY DIVISION

CAHOKIA QUADRANGLE  
ILLINOIS—MISSOURI  
7.5 MINUTE SERIES (TOPOGRAPHIC)



Map by the Geological Survey  
Revised by the Army Map Service  
Published for civil use by the Geological Survey  
Control by USGS and USC&GS  
Topography from planetair surveys by the Geological Survey 1929  
and 1933. Planimetric detail revised from aerial photographs  
taken 1952. Field check 1954  
Polyconic projection. 1927 North American datum  
10,000-foot grids based on Illinois coordinate system, west zone  
and Missouri coordinate system, east zone  
1000-meter Universal Transverse Mercator grid ticks, zone 15,  
shown in blue  
Red tint indicates areas in which only landmark buildings are shown



THIS MAP COMPLIES WITH NATIONAL MAP ACCURACY STANDARDS  
FOR SALE BY U.S. GEOLOGICAL SURVEY, DENVER, COLORADO 80225 OR WASHINGTON, D. C. 20242  
STATE GEOLOGICAL SURVEY, URBANA, ILLINOIS 61801  
AND BY THE MISSOURI GEOLOGICAL SURVEY, ROLLA, MISSOURI 65401  
A FOLDER DESCRIBING TOPOGRAPHIC MAPS AND SYMBOLS IS AVAILABLE ON REQUEST

Historical File  
Topographic Division

U.S.G.S.  
FILE COPY  
TOPOGRAPHIC DIVISION

ROAD CLASSIFICATION  
Heavy-duty ——— Light-duty ———  
Medium-duty ——— Unimproved dirt ———  
U.S. Route ——— State Route ———

CAHOKIA, ILL.—MO.  
N 3830—W 9007.5/7.5

1954  
AMS 2961 II SW—SERIES V863

1725  
T/O  
FEB 1 1960