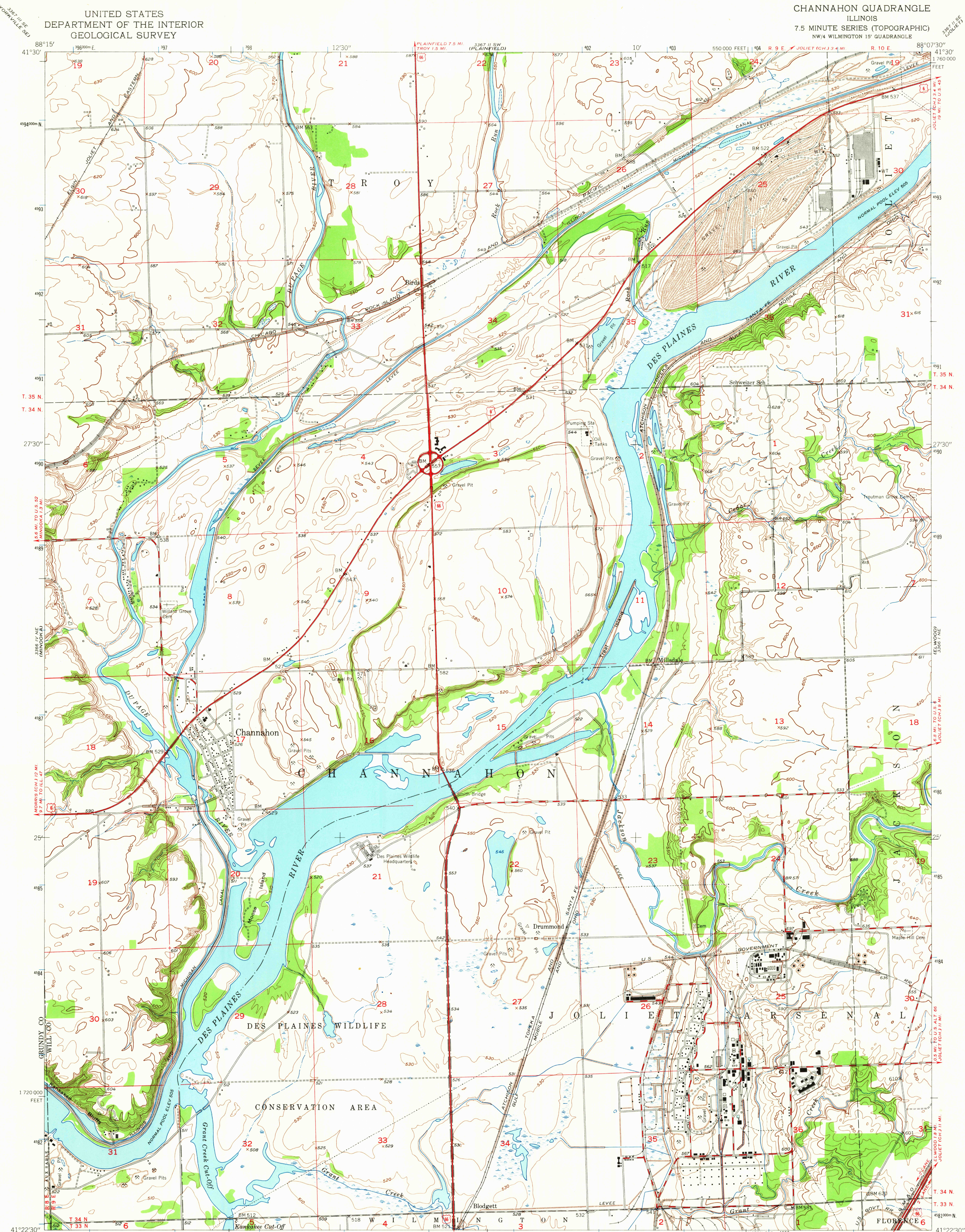


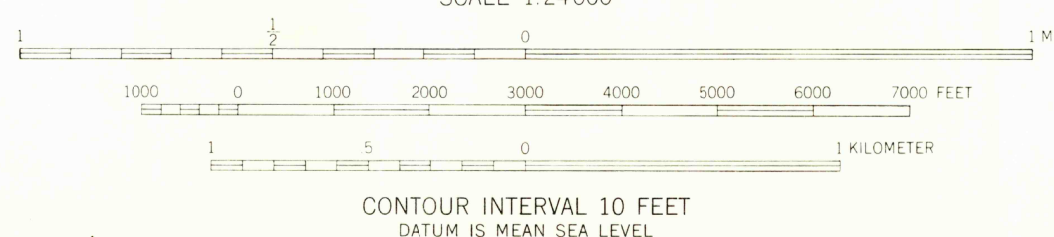
UNITED STATES
DEPARTMENT OF THE INTERIOR
GEOLOGICAL SURVEY

CHANNAHON QUADRANGLE
ILLINOIS
7.5 MINUTE SERIES (TOPOGRAPHIC)
NW/4 WILMINGTON 15' QUADRANGLE

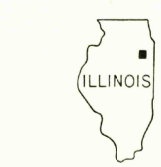


Mapped, edited, and published by the Geological Survey
Control by USGS, USCGS, and USCE
Culture and drainage in part compiled from aerial photographs
taken 1952. Topography by plane-table surveys 1953-1954
Polyconic projection. 1927 North American datum
10,000-foot grid based on Illinois coordinate system,
east zone
1000-meter Universal Transverse Mercator grid ticks,
zone 16, shown in blue

UTM GRID AND 1954 MAGNETIC NORTH
DECLINATION AT CENTER OF SHEET



USGS
Historical File
Topographic Division



U.S.G.S.

FILE COPY
TOPOGRAPHIC DIVISION

ROAD CLASSIFICATION
Heavy-duty 4 LANE 16 LANE Light-duty
Medium-duty 4 LANE 16 LANE Unimproved dirt
U. S. Route State Route

CHANNAHON, ILL.
NW/4 WILMINGTON 15' QUADRANGLE
N4122.5-W8807.5/7.5

1954

AMS 3366 I NW-SERIES V863

THIS MAP COMPLIES WITH NATIONAL MAP ACCURACY STANDARDS
FOR SALE BY U. S. GEOLOGICAL SURVEY, WASHINGTON, D. C. 20242
AND BY THE STATE GEOLOGICAL SURVEY, URBANA, ILLINOIS
A FOLDER DESCRIBING TOPOGRAPHIC MAPS AND SYMBOLS IS AVAILABLE ON REQUEST

2675
APR 1 1955