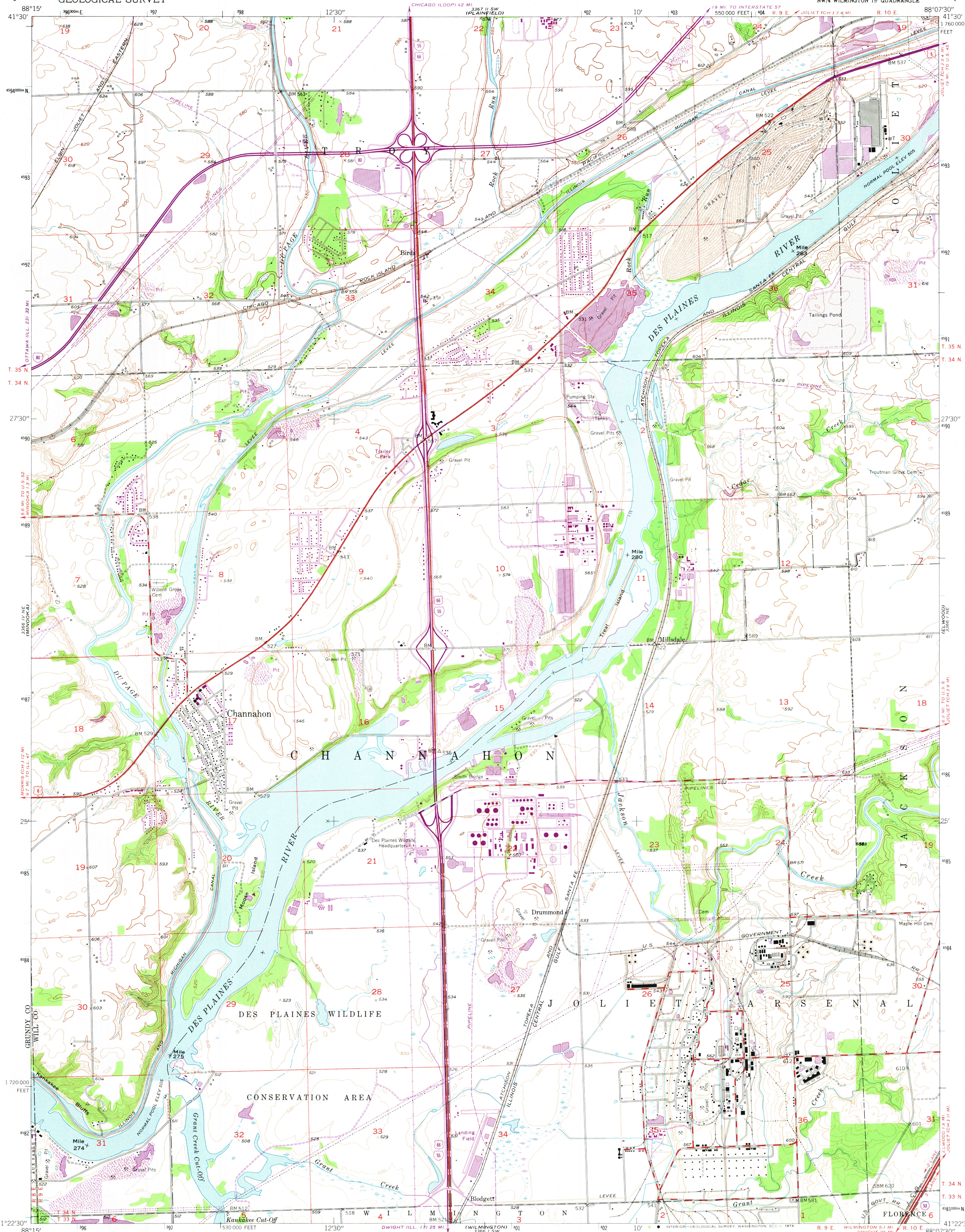


UNITED STATES
DEPARTMENT OF THE INTERIOR
GEOLOGICAL SURVEY

CHANNAHON QUADRANGLE
ILLINOIS
7.5 MINUTE SERIES (TOPOGRAPHIC)
NW/4 WILMINGTON 15' QUADRANGLE



Mapped, edited, and published by the Geological Survey

Control by USGS, USC&GS, and USCE

Culture and drainage in part compiled from aerial photographs
taken 1952. Topography by plane-table surveys 1953-1954

Polyconic projection. 1927 North American datum
10,000-foot grid based on Illinois coordinate system,
east zone
1000-meter Universal Transverse Mercator grid ticks,
zone 16, shown in blue

Revisions shown in purple compiled from aerial photographs
taken 1973. This information not field checked

UTM GRID AND 1973 MAGNETIC NORTH
DECLINATION AT CENTER OF SHEET

SCALE 1:24,000

CONTOUR INTERVAL 10 FEET
DATUM IS MEAN SEA LEVEL

THIS MAP COMPLIES WITH NATIONAL MAP ACCURACY STANDARDS
FOR SALE BY U.S. GEOLOGICAL SURVEY, WASHINGTON, D.C. 20242
AND BY THE STATE GEOLOGICAL SURVEY, URBANA, ILLINOIS 61801
A FOLDER DESCRIBING TOPOGRAPHIC MAPS AND SYMBOLS IS AVAILABLE ON REQUEST

ROAD CLASSIFICATION
Heavy-duty 4 LANE 6 LANE Light-duty
Medium-duty 4 LANE 6 LANE Unimproved dirt
U.S. Route State Route
Interstate Route

USGS
Historical File
Topographic Division

CHANNAHON, ILL.
NW/4 WILMINGTON 15' QUADRANGLE
N4122.5-W8807.5/7.5

1954
PHOTOREVISED 1973
AMS 3366 I NW-SERIES V863

APR 11 1974

2985