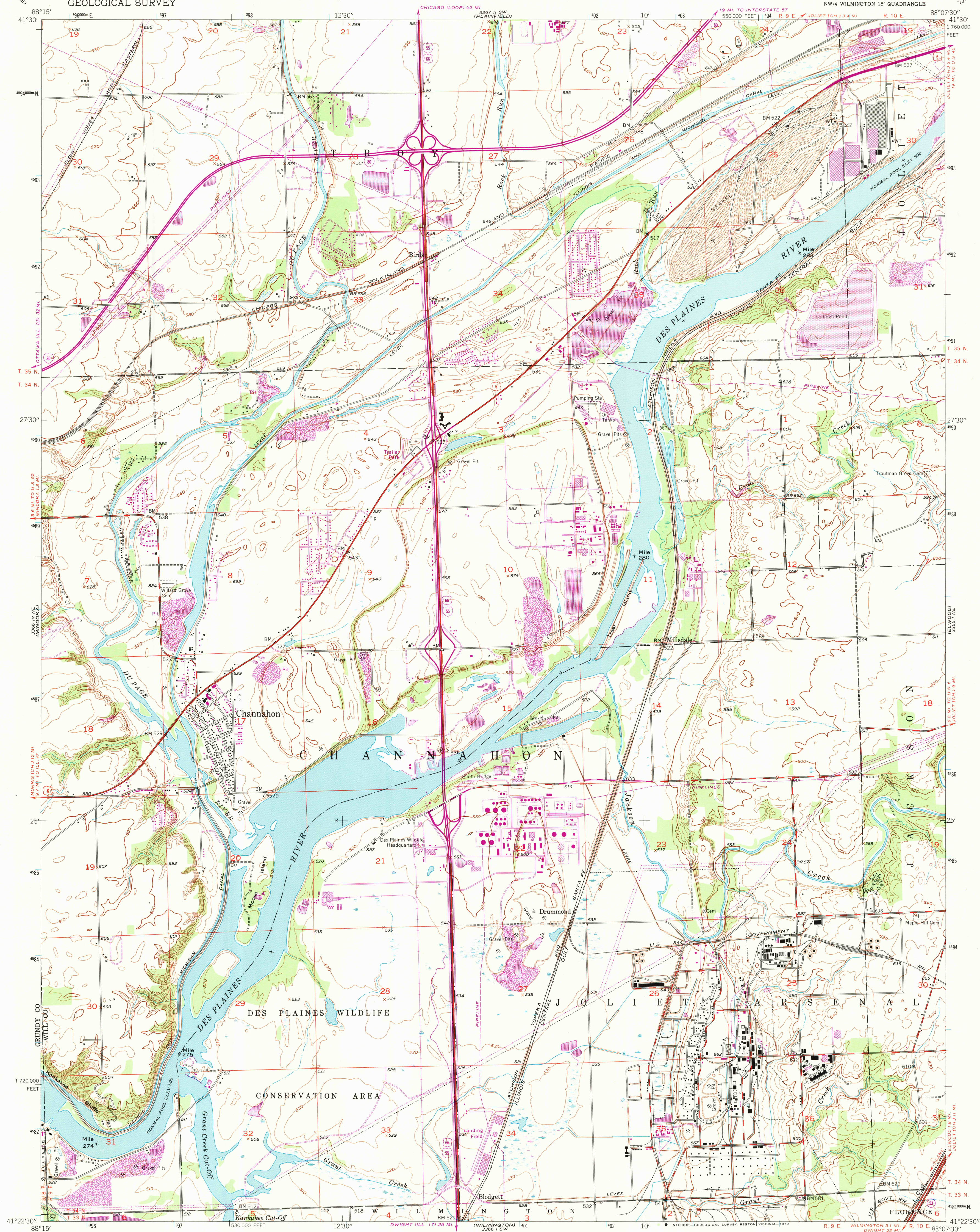


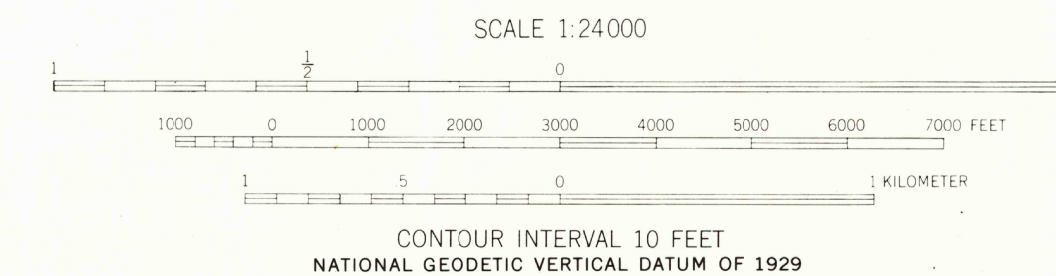
UNITED STATES
DEPARTMENT OF THE INTERIOR
GEOLOGICAL SURVEY

CHANNAHON QUADRANGLE
ILLINOIS
7.5 MINUTE SERIES (TOPOGRAPHIC)
NW/4 WILMINGTON 15' QUADRANGLE



Mapped, edited, and published by the Geological Survey
Control by USGS, USCA&GS, and USCE
Culture and drainage in part compiled from aerial photographs
taken 1952. Topography by plane-table surveys 1953-1954
Polyconic projection. 1927 North American datum
10,000-foot grid based on Illinois coordinate system,
east zone
1000-meter Universal Transverse Mercator grid ticks,
zone 16, shown in blue
Revisions shown in purple compiled from aerial photographs
taken 1973. This information not field checked
There may be private inholdings within the boundaries
of the National or State reservations shown on this map

Map photosinspected 1978
No major culture or drainage changes observed



THIS MAP COMPLIES WITH NATIONAL MAP ACCURACY STANDARDS
FOR SALE BY U.S. GEOLOGICAL SURVEY, DENVER, COLORADO 80225, OR RESTON, VIRGINIA 22092
AND ILLINOIS GEOLOGICAL SURVEY, CHAMPAIGN, ILLINOIS 61820
A FOLDER DESCRIBING TOPOGRAPHIC MAPS AND SYMBOLS IS AVAILABLE ON REQUEST

ROAD CLASSIFICATION
Heavy-duty 4 LANE 6 LANE Light-duty
Medium-duty 4 LANE 6 LANE Unimproved dirt
U.S. Route State Route
Interstate Route

CHANNAHON, ILL.
NW/4 WILMINGTON 15' QUADRANGLE
N4122.5-W8807.5/7.5
PHOTOINSPECTED 1978
1954
PHOTOREVISED 1973
AMS 3366 1 NW-SERIES V363

USGS NMD HISTORICAL MAP
FEB 23 1990
REC'D FILE COPY