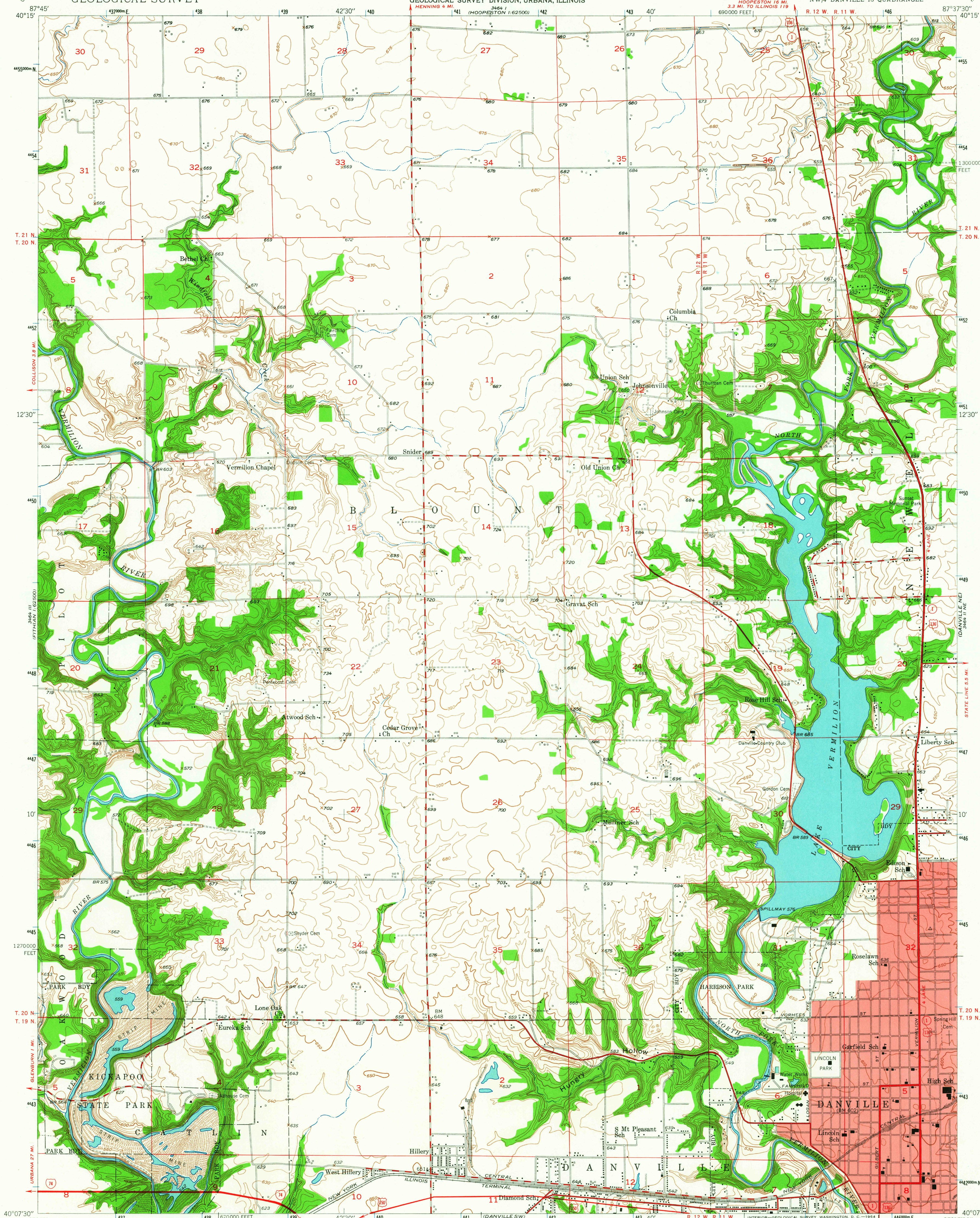


UNITED STATES
DEPARTMENT OF THE INTERIOR
GEOLOGICAL SURVEY

STATE OF ILLINOIS
DEPARTMENT OF REGISTRATION AND EDUCATION
GEOLOGICAL SURVEY DIVISION, URBANA, ILLINOIS

DANVILLE NW QUADRANGLE
ILLINOIS-VERMILION CO.
7.5 MINUTE SERIES (TOPOGRAPHIC)
NW/4 DANVILLE 15' QUADRANGLE



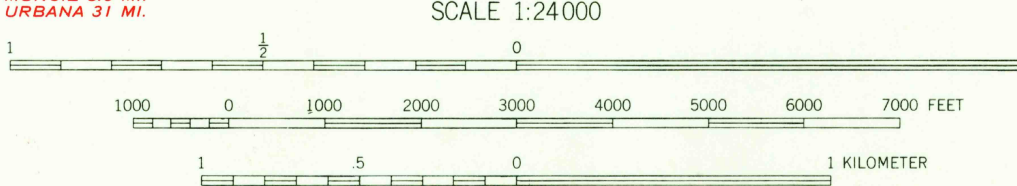
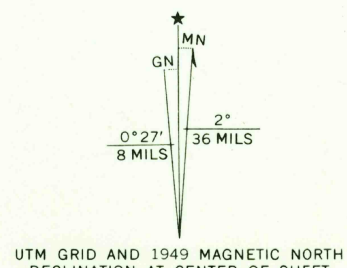
Mapped, edited, and published by the Geological Survey
Control by USGS and USC&GS

Topography by multiplex methods from aerial photographs
taken 1946, and by plane-table surveys 1948
Field check 1948

Polyconic projection. 1927 North American datum
10,000-foot grid based on Illinois coordinate system,
east zone

Red tint indicates area in which only
landmark buildings are shown

1000-meter Universal Transverse Mercator grid ticks,
zone 16, shown in blue



CONTOUR INTERVAL 10 FEET

DOTTED LINES REPRESENT HALF-INTERVAL CONTOURS
DATUM IS MEAN SEA LEVEL

THIS MAP COMPLIES WITH NATIONAL MAP ACCURACY STANDARDS
FOR SALE BY U. S. GEOLOGICAL SURVEY, WASHINGTON 25, D. C.
AND BY THE STATE GEOLOGICAL SURVEY, URBANA, ILLINOIS

A FOLDER DESCRIBING TOPOGRAPHIC MAPS AND SYMBOLS IS AVAILABLE ON REQUEST

USGS
Historical File
Topographic Division



QUADRANGLE LOCATION

ROAD CLASSIFICATION
Heavy-duty ——— Light-duty ———
Medium-duty ——— Unimproved dirt ———
Interstate Route — U.S. Route — State Route

DANVILLE NW, ILL.
NW/4 DANVILLE 15' QUADRANGLE
N4007.5-W8737.5/7.5

1948

AMS 3464 II NW—SERIES V963

APR 28 1964