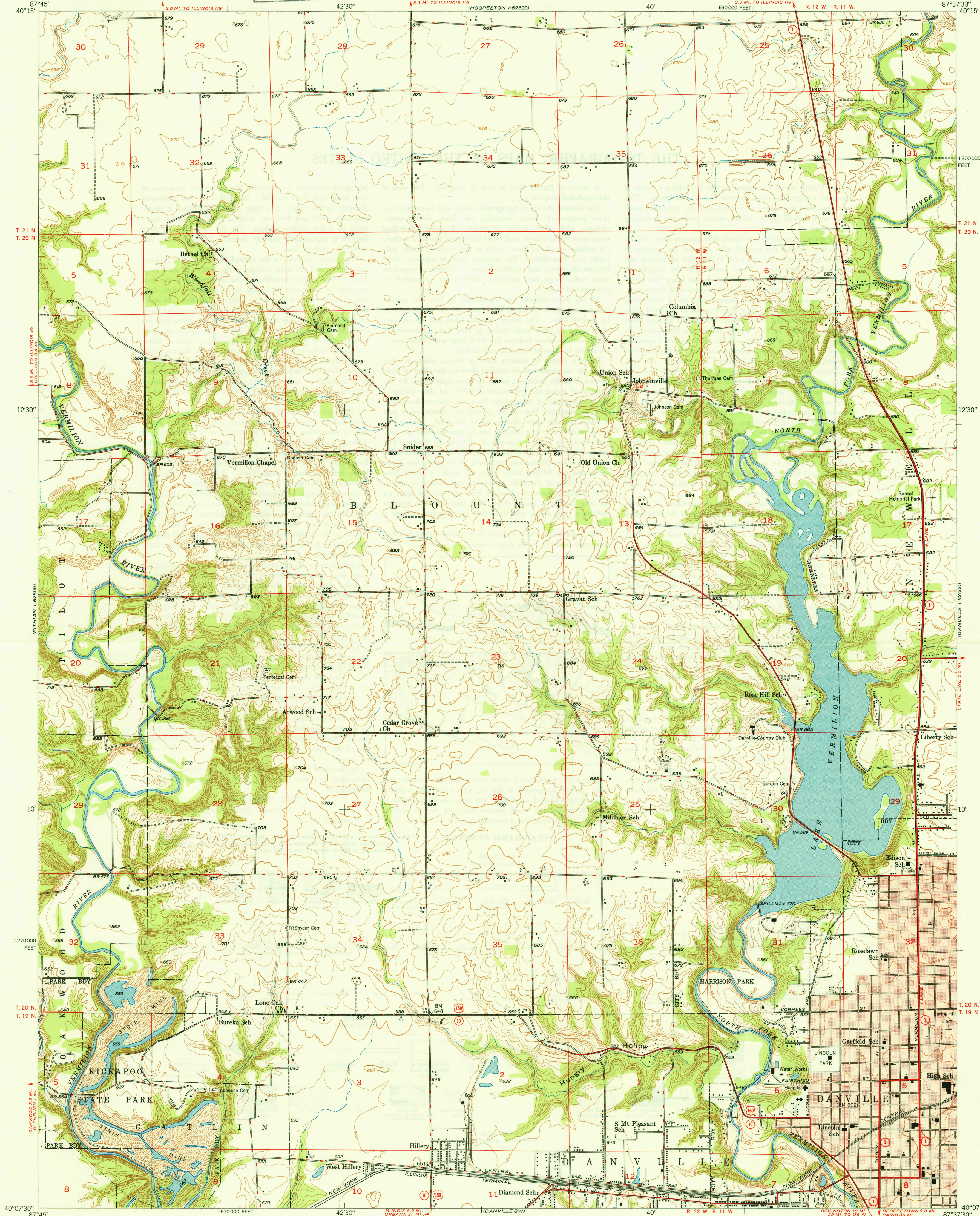


UNITED STATES  
DEPARTMENT OF THE INTERIOR  
GEOLOGICAL SURVEY

U. S. G. S.  
FILE COPY  
Inspection and Editing.

ADLAI E. STEVENSON, GOVERNOR  
DEPARTMENT OF REGISTRATION AND EDUCATION  
NOBLE J. PUFFER, DIRECTOR  
GEOLOGICAL SURVEY DIVISION, M. M. LEIGHTON, CHIEF  
URBANA, ILLINOIS

DANVILLE NW QUADRANGLE  
ILLINOIS-VERMILION CO.  
7.5 MINUTE SERIES (TOPOGRAPHIC)  
NW/4 DANVILLE 15' QUADRANGLE

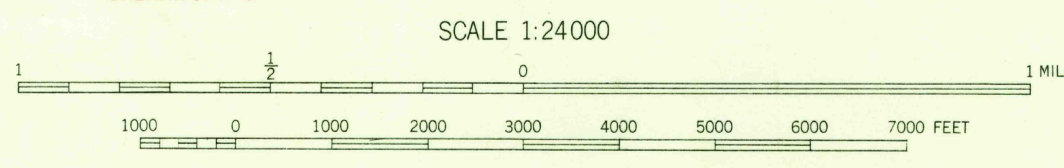


Mapped, edited, and published by the Geological Survey  
Control by USGS and USC&GS  
Topography by multiplex methods from aerial photographs  
taken 1945, and by plane-table surveys 1948  
Field check 1948

Polyconic projection. 1927 North American datum  
10,000-foot grid based on Illinois coordinate system,  
east zone

Red tint indicates area in which only  
landmark buildings are shown

APPROXIMATE MEAN  
DECLINATION, 1948



CONTOUR INTERVAL 10 FEET  
DOTTED LINES REPRESENT HALF-INTERVAL CONTOURS  
DATUM IS MEAN SEA LEVEL

THIS MAP COMPLIES WITH NATIONAL MAP ACCURACY STANDARDS  
FOR SALE BY U. S. GEOLOGICAL SURVEY, WASHINGTON 25, D. C.  
AND BY THE STATE GEOLOGICAL SURVEY, URBANA, ILLINOIS

USGS  
Historical File  
Topographic Division

U. S. G. S.  
FILE COPY  
Inspection and Editing.

ROAD CLASSIFICATION  
HARD-SURFACE ALL WEATHER ROADS DRY WEATHER ROADS  
Heavy-duty ——— 4 LANE 10 LANE Improved dirt ———  
Medium-duty ——— 4 LANE 10 LANE Unimproved dirt ———  
Loose-surface, graded, or narrow hard-surface ———  
U. S. Route State Route

DANVILLE NW, ILL.  
NW/4 DANVILLE 15' QUADRANGLE  
N4007.5-W8737.5/7.5

EDITION OF 1950

(3230)  
6/27/50