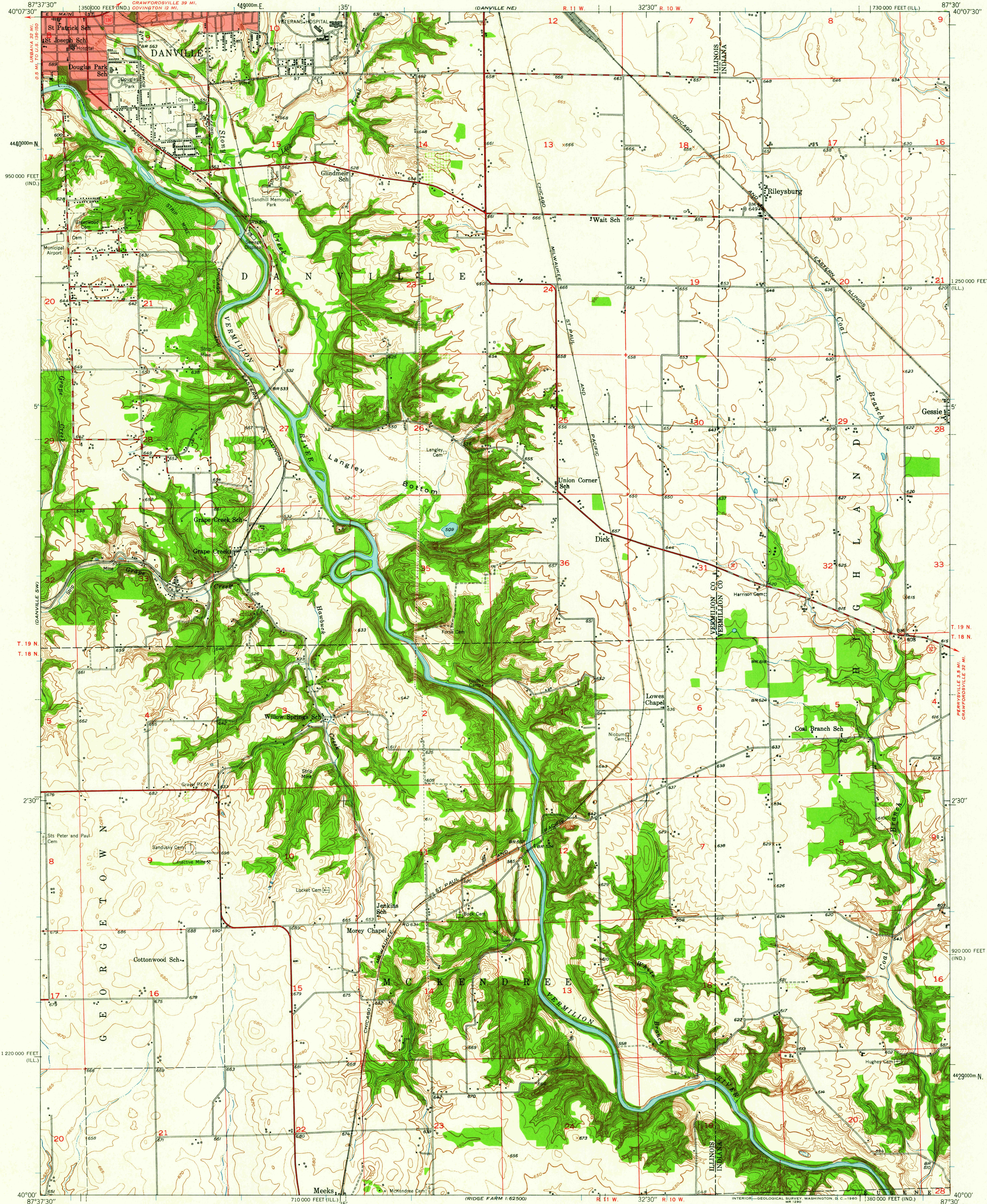


UNITED STATES
DEPARTMENT OF THE INTERIOR
GEOLOGICAL SURVEY

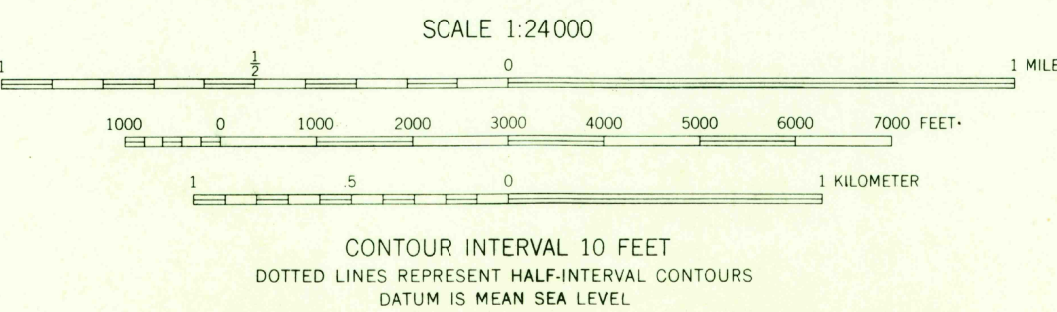
STATE OF ILLINOIS
DEPARTMENT OF REGISTRATION AND EDUCATION
GEOLOGICAL SURVEY DIVISION

DANVILLE SE QUADRANGLE
ILLINOIS-INDIANA
7.5 MINUTE SERIES (TOPOGRAPHIC)
SE/4 DANVILLE 15' QUADRANGLE



Mapped, edited, and published by the Geological Survey
Control by USGS and USC&GS
Topography by multiplex methods from aerial photographs
taken 1946, and by plane-table surveys 1950
Field check 1950
Polyconic projection, 1927 North American datum
10,000-foot grids based on Illinois coordinate system,
east zone, and Indiana coordinate system, west zone
1000-meter Universal Transverse Mercator grid ticks,
zone 16, shown in blue
Red tint indicates area in which only
landmark buildings are shown

TRUE NORTH
MAGNETIC NORTH
APPROXIMATE MEAN
DECLINATION, 1950



THIS MAP COMPLIES WITH NATIONAL MAP ACCURACY STANDARDS
FOR SALE BY U. S. GEOLOGICAL SURVEY, WASHINGTON 25, D. C.
BY THE STATE GEOLOGICAL SURVEY, URBANA, ILLINOIS
AND BY THE INDIANA DEPARTMENT OF CONSERVATION, INDIANAPOLIS, INDIANA.
A FOLDER DESCRIBING TOPOGRAPHIC MAPS AND SYMBOLS IS AVAILABLE ON REQUEST

USGS
Historical File
Topographic Division

ROAD CLASSIFICATION
Heavy-duty ——— Light-duty ———
Medium-duty ——— Unimproved dirt ———
U. S. Route ——— State Route ———



U.S.G.S.
FILE COPY
TOPOGRAPHIC DIVISION

DANVILLE SE, ILL.-IND.
SE/4 DANVILLE 15' QUADRANGLE
N4000-W8730/7.5
1950

MAR - 3 1950

3005