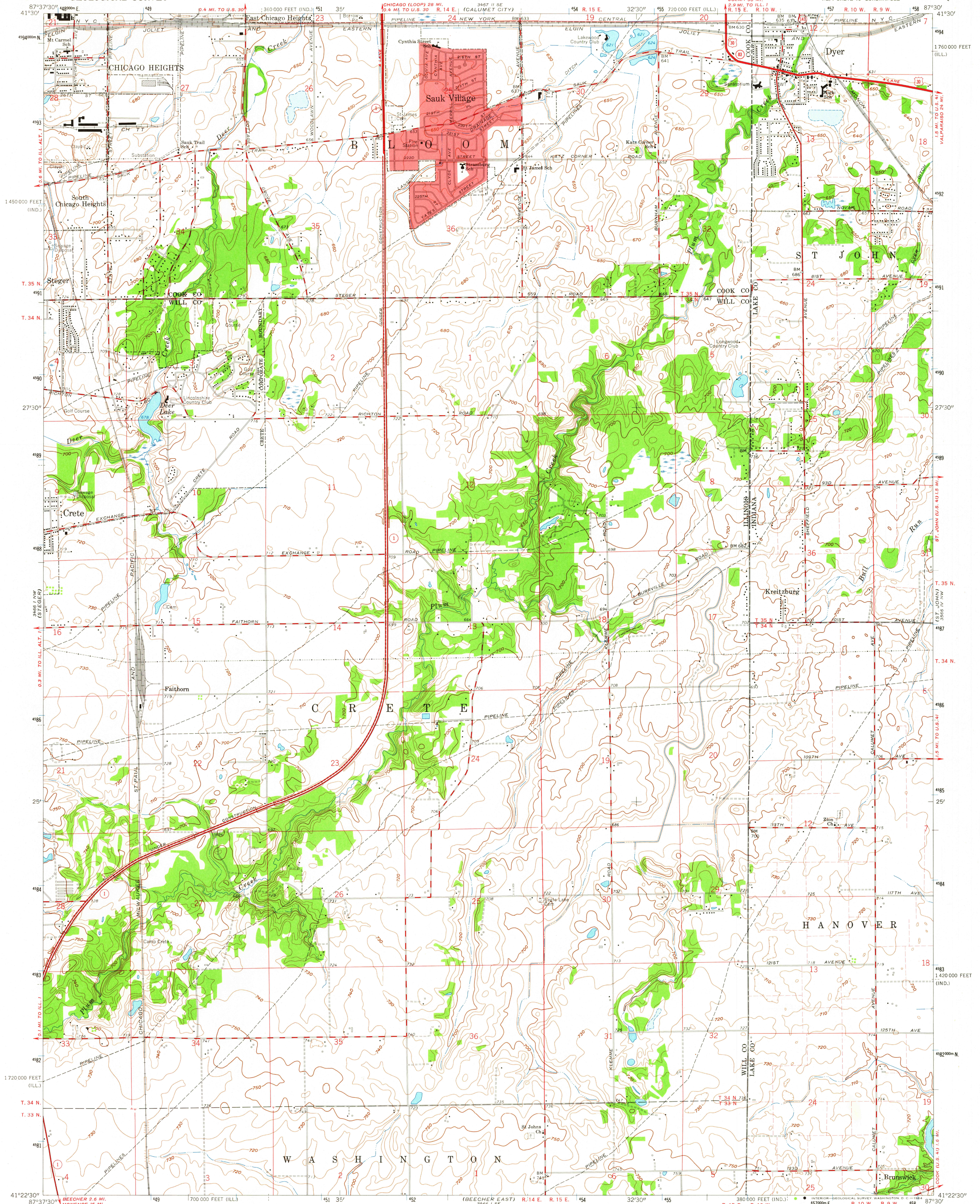


UNITED STATES  
DEPARTMENT OF THE INTERIOR  
GEOLOGICAL SURVEY

DYER QUADRANGLE  
ILLINOIS-INDIANA  
7.5 MINUTE SERIES (TOPOGRAPHIC)  
NE/4 CRETE 15' QUADRANGLE



Mapped, edited, and published by the Geological Survey  
Illinois area mapped in cooperation with Illinois  
Geological Survey

Control by USGS and USC&GS

Planimetry in Illinois by photogrammetric methods from aerial photographs  
taken 1939. Topography by planimetric surveys 1946. Revised 1962  
Planimetry in Indiana by photogrammetric methods from aerial photographs  
taken 1952. Topography by planimetric surveys 1953.  
Revised in cooperation with Indiana Department of Conservation 1962

Polyconic projection. 1927 North American datum  
10,000-foot grid based on Illinois coordinate system, east zone, and  
Indiana coordinate system, west zone  
1000-meter Universal Transverse Mercator grid ticks, zone 16, shown in blue

Fine red dashed lines in Indiana indicate selected fence and field lines where  
generally visible on aerial photographs. This information is unchecked  
Red tint indicates areas in which only landmark buildings are shown

UTM GRID AND 1962 MAGNETIC NORTH  
DECLINATION AT CENTER OF SHEET

THIS MAP COMPLIES WITH NATIONAL MAP ACCURACY STANDARDS  
FOR SALE BY U. S. GEOLOGICAL SURVEY, WASHINGTON 25, D. C.,  
THE STATE GEOLOGICAL SURVEY, URBANA, ILLINOIS,  
AND INDIANA DEPARTMENT OF CONSERVATION, INDIANAPOLIS, INDIANA  
A FOLDER DESCRIBING TOPOGRAPHIC MAPS AND SYMBOLS IS AVAILABLE ON REQUEST

USGS  
Historical File  
Topographic Division



ROAD CLASSIFICATION  
Heavy-duty ——— Light-duty ———  
Medium-duty ——— Unimproved dirt ———  
U. S. Route ——— State Route ———

DYER, ILL.—IND.  
NE/4 CRETE 15' QUADRANGLE  
N4122.5—W8730/7.5

1962

AMS 3466 I NE—SERIES V863