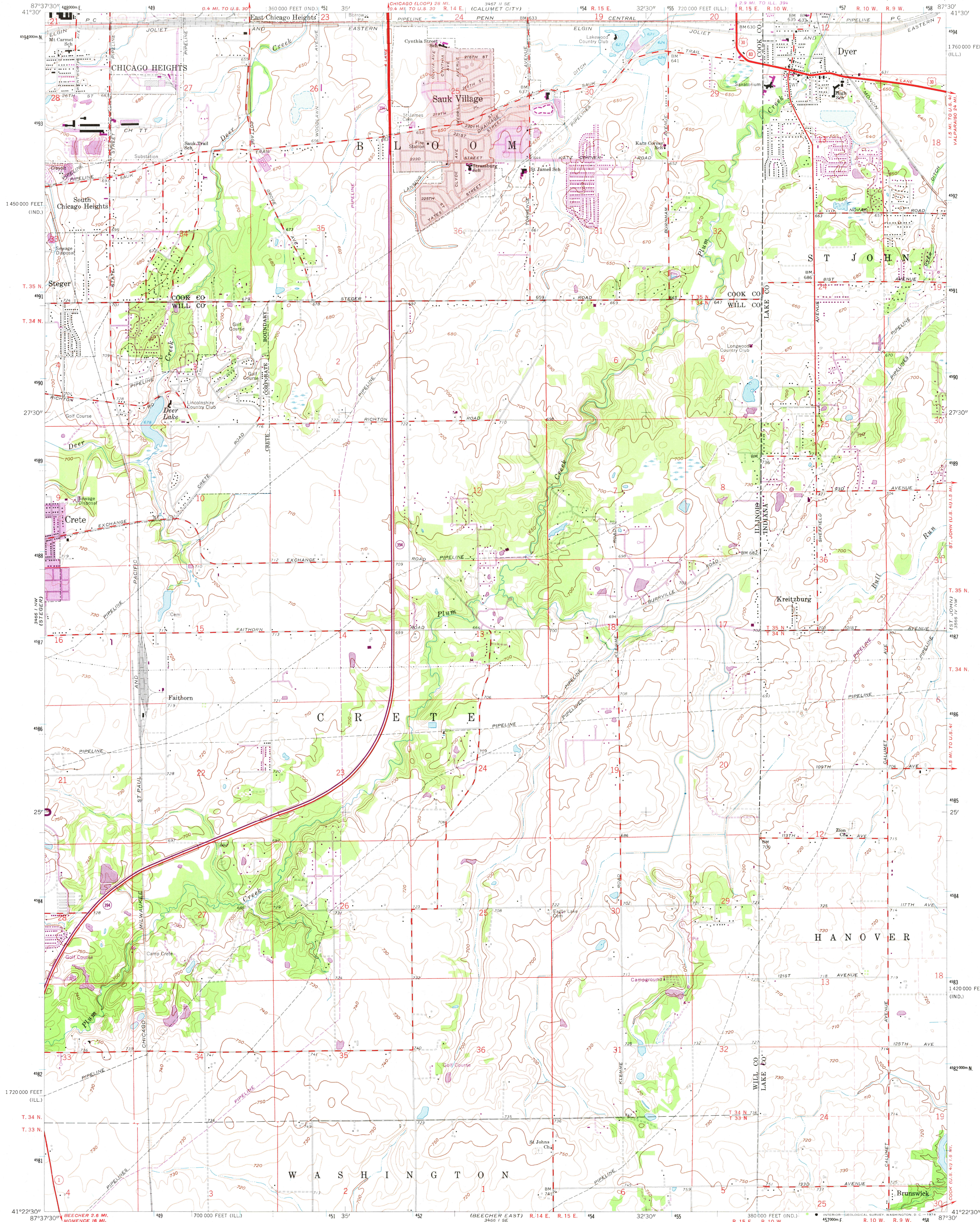


UNITED STATES
DEPARTMENT OF THE INTERIOR
GEOLOGICAL SURVEY

DYER QUADRANGLE
ILLINOIS-INDIANA
7.5 MINUTE SERIES (TOPOGRAPHIC)



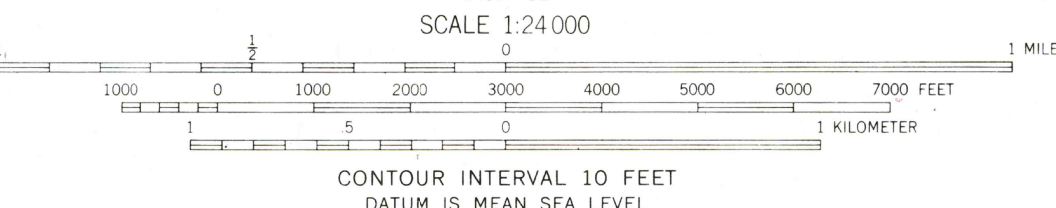
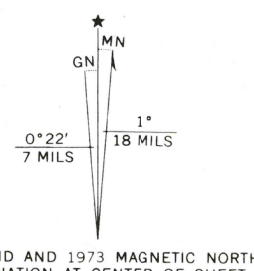
Mapped, edited, and published by the Geological Survey
Illinois area mapped in cooperation with Illinois
Geological Survey

Control by USGS and USC&GS

Planimetry in Illinois by photogrammetric methods from aerial photographs
taken 1939. Topography by planetable surveys 1946. Revised 1962
Planimetry in Indiana by photogrammetric methods from aerial photographs
taken 1952. Topography by planetable surveys 1953.
Revised in cooperation with Indiana Department of Conservation 1962

Polyconic projection. 1927 North American datum
10,000-foot grids based on Illinois coordinate system, east zone, and
Indiana coordinate system, west zone
1000-meter Universal Transverse Mercator grid ticks, zone 16, shown in blue

Fine red dashed lines in Indiana indicate selected fence and field lines where
generally visible on aerial photographs. This information is unchecked
Red tint indicates areas in which only landmark buildings are shown



THIS MAP COMPLIES WITH NATIONAL MAP ACCURACY STANDARDS
FOR SALE BY U. S. GEOLOGICAL SURVEY, WASHINGTON, D. C. 20242,
STATE GEOLOGICAL SURVEY, URBANA, ILLINOIS 61801,
AND INDIANA DEPARTMENT OF NATURAL RESOURCES, INDIANAPOLIS, INDIANA 46204
A FOLDER DESCRIBING TOPOGRAPHIC MAPS AND SYMBOLS IS AVAILABLE ON REQUEST



ROAD CLASSIFICATION
Heavy-duty ——— Light-duty ———
Medium-duty ——— Unimproved dirt ———
U. S. Route ——— State Route ———

DYER, ILL.-IND.
N4122.5-W8730/7.5

USGS
Historical File
Topographic Division

1962
PHOTOREVISED 1973
AMS 3466 I NE-SERIES V863

MAY 16 1974