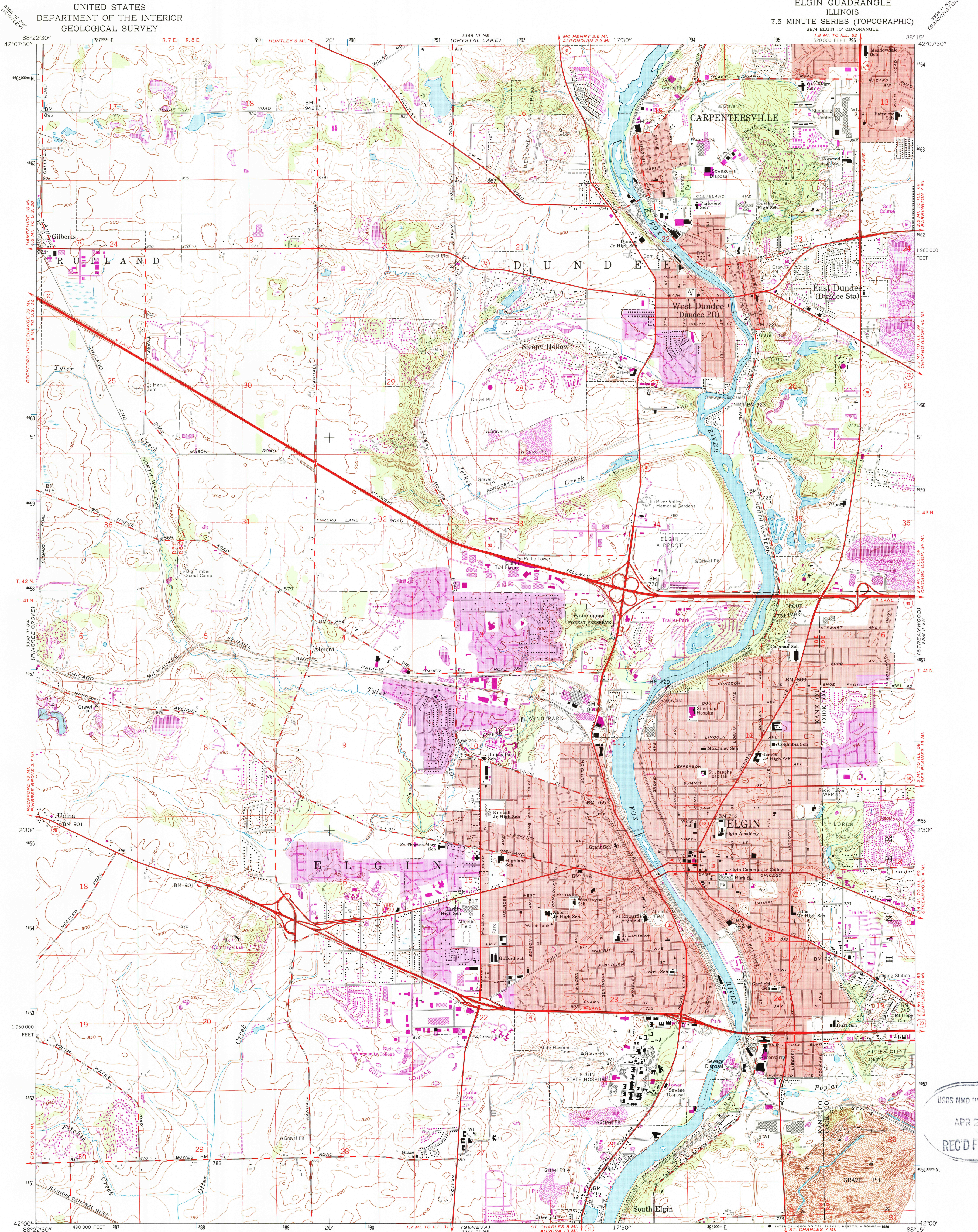


UNITED STATES
DEPARTMENT OF THE INTERIOR
GEOLOGICAL SURVEY

ELGIN QUADRANGLE
ILLINOIS
7.5 MINUTE SERIES (TOPOGRAPHIC)



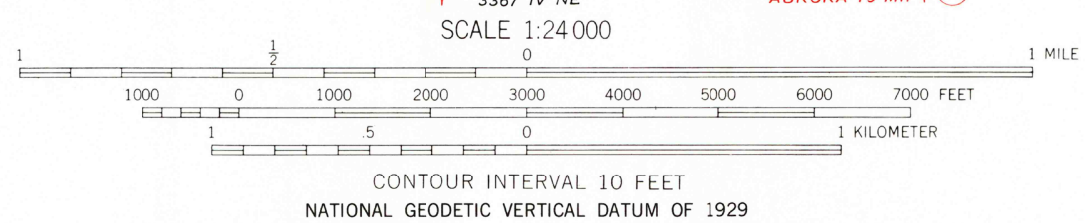
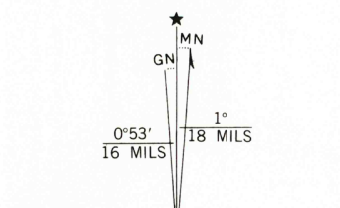
Mapped, edited, and published by the Geological Survey
Control by USGS and USC&GS

Topography by photogrammetric methods from aerial
photographs taken 1958. Field checked 1962

Polyconic projection. 1927 North American datum
10,000-foot grid based on Illinois coordinate system, east zone
1000-meter Universal Transverse Mercator grid ticks,
zone 16, shown in blue

Red tint indicates areas in which only landmark buildings are shown
Fine red dashed lines indicate selected fence and field lines where
generally visible on aerial photographs. This information is unchecked

To place on the predicted North American Datum 1983
move the projection lines 2 meters north and
6 meters east as shown by dashed corner ticks
There may be private inholdings within the boundaries of
the National or State reservations shown on this map



ROAD CLASSIFICATION
Primary highway, hard surface
Secondary highway, hard surface
Unimproved road
Interstate Route
U.S. Route
State Route
Light duty road, hard or improved surface

ELGIN, ILL.
SE/4 ELGIN 15' QUADRANGLE
42088-A3-TF-024
1962
PHOTOREVISED 1972 AND 1980
DMA 3368 III SE—SERIES V863

Revisions shown in purple compiled from aerial photographs
taken 1972 and 1978. Map edited 1980
This information not field checked
Purple tint indicates extension of urban area

USGS NHD HISTORICAL MAP
APR 23 1999
REC'D FILE COPY