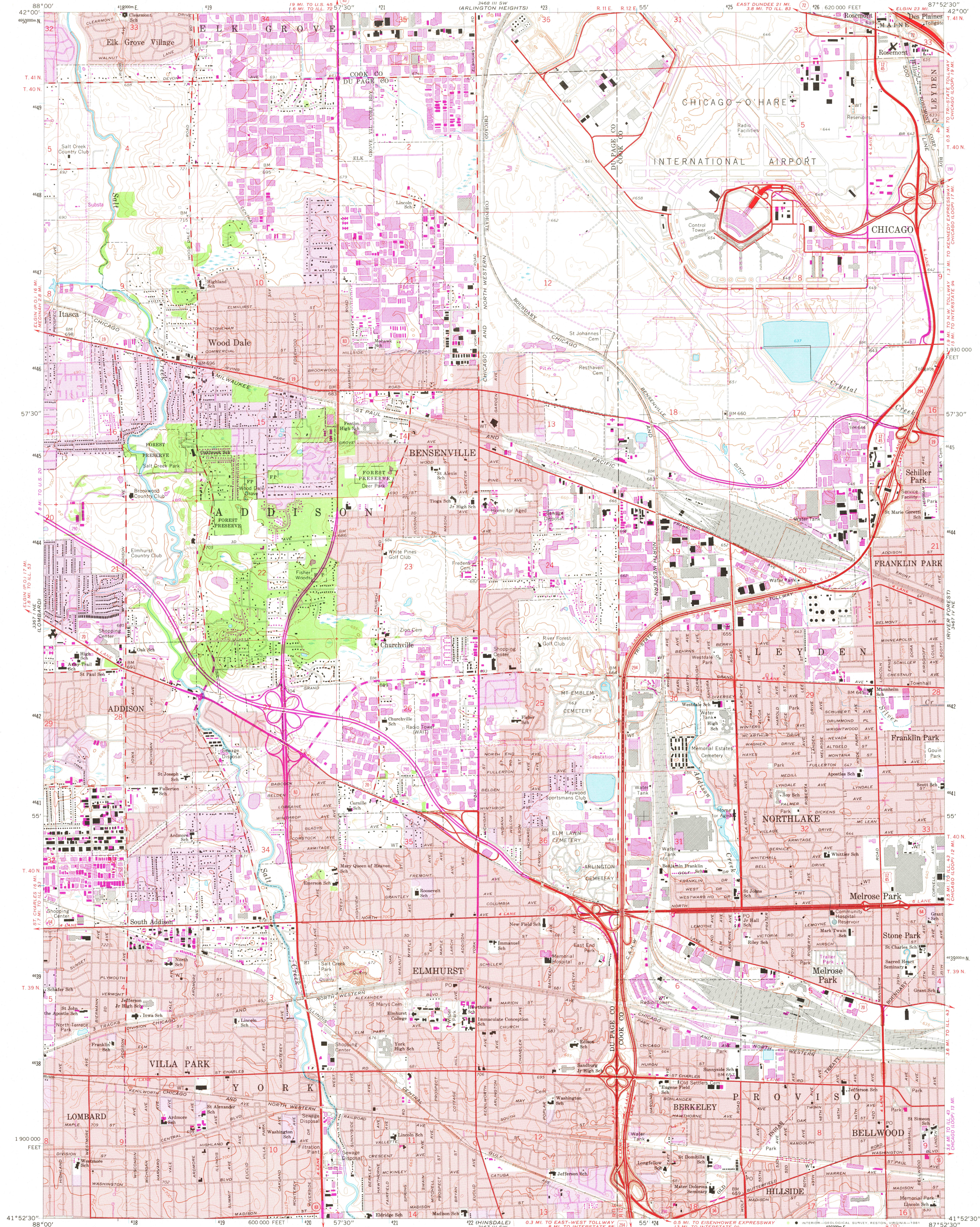


UNITED STATES  
DEPARTMENT OF THE INTERIOR  
GEOLOGICAL SURVEY

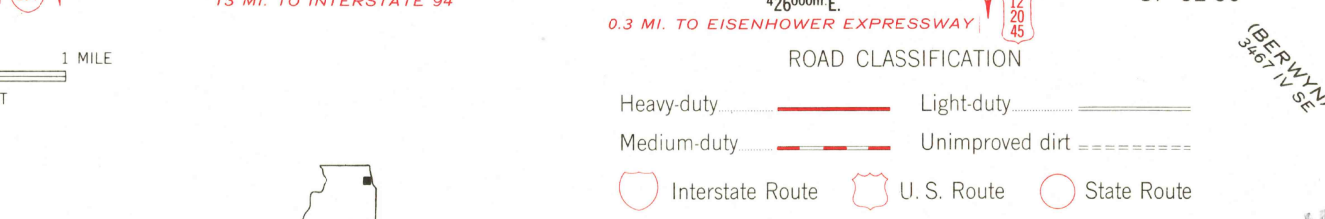
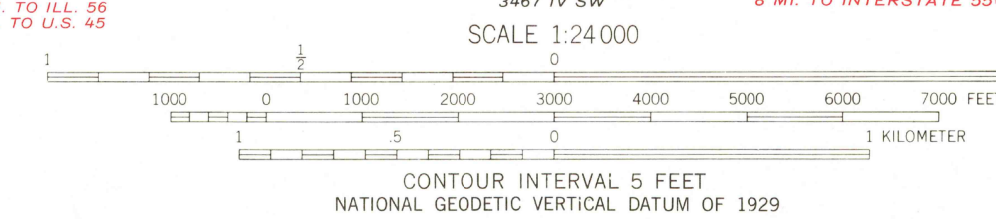
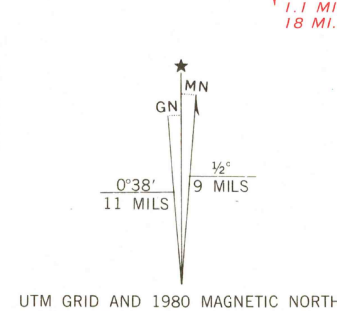
ELMHURST QUADRANGLE  
ILLINOIS  
7.5 MINUTE SERIES (TOPOGRAPHIC)



Mapped, edited, and published by the Geological Survey  
in cooperation with State of Illinois Geological Survey  
Control by USGS, USC&GS, and Cook County Highway Department  
Planimetry by photogrammetric methods from aerial photographs  
taken 1962-63. Topography by planimetric surveys 1926  
Revised 1963

Polycyclic projection. 1927 North American datum  
10,000-foot grid based on Illinois coordinate system, east zone  
1000-meter Universal Transverse Mercator grid ticks,  
zone 16, shown in blue

Red tint indicates areas in which only landmark buildings are shown  
Fine red dashed lines indicate selected fence and field lines where  
generally visible on aerial photographs. This information is unchecked  
To place on the predicted North American Datum 1983  
move the projection lines 2 meters north and  
5 meters east as shown by dashed corner ticks



THIS MAP COMPLIES WITH NATIONAL MAP ACCURACY STANDARDS  
FOR SALE BY U. S. GEOLOGICAL SURVEY, RESTON, VIRGINIA 22092  
AND BY THE STATE GEOLOGICAL SURVEY, URBANA, ILLINOIS 61801  
A FOLDER DESCRIBING TOPOGRAPHIC MAPS AND SYMBOLS IS AVAILABLE ON REQUEST

QUADRANGLE LOCATION  
Revisions shown in purple compiled from aerial photographs  
taken 1972 and 1978. Map edited 1980  
This information not field checked  
Purple tint indicates extension of urban area

ELMHURST, ILL.  
N4152.5—W8752.5/7.5

1963  
PHOTOREVISED 1972 AND 1980  
DMA 3467 IV NW—SERIES V863

USGS  
Historical File  
National Mapping Div.

MAY 5 1981  
3200