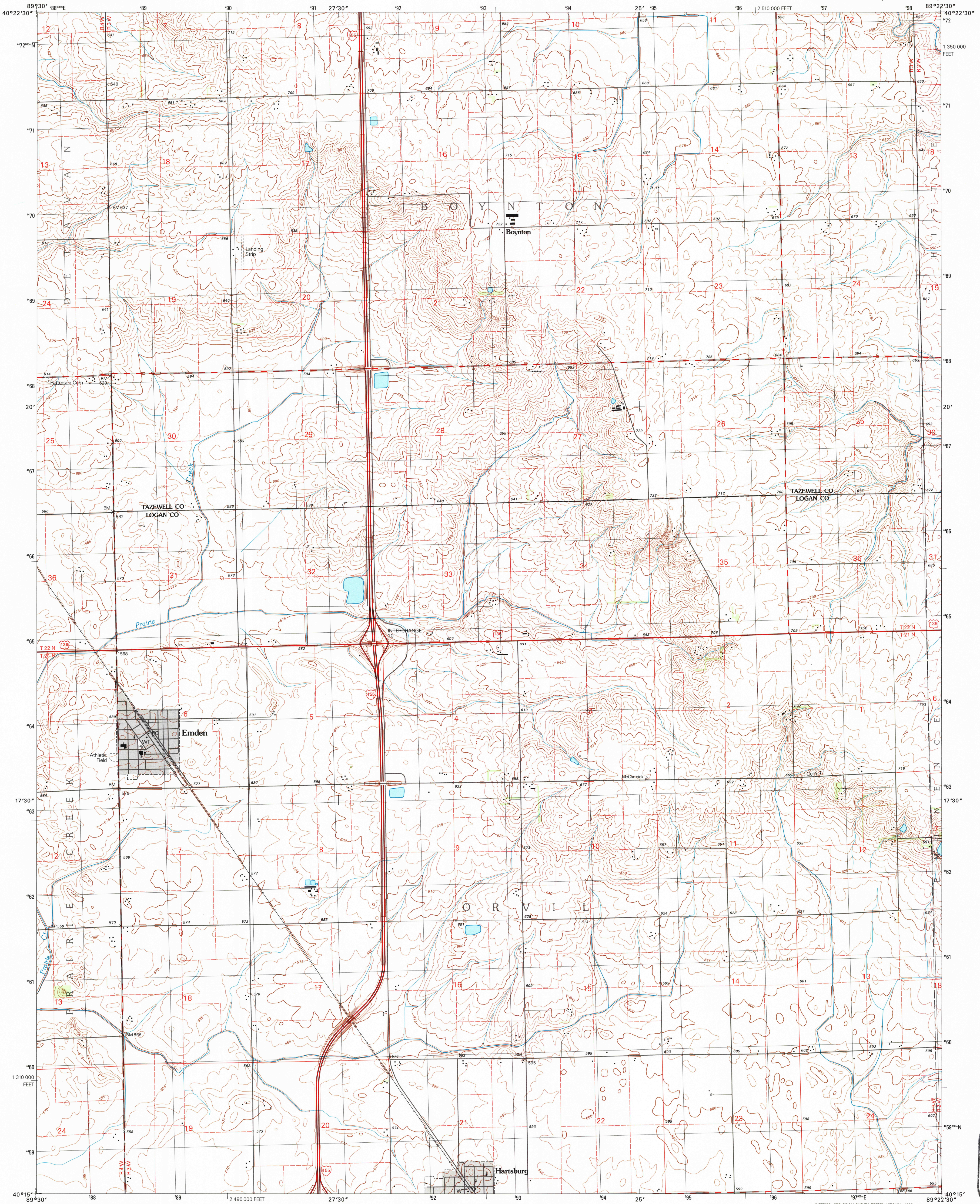


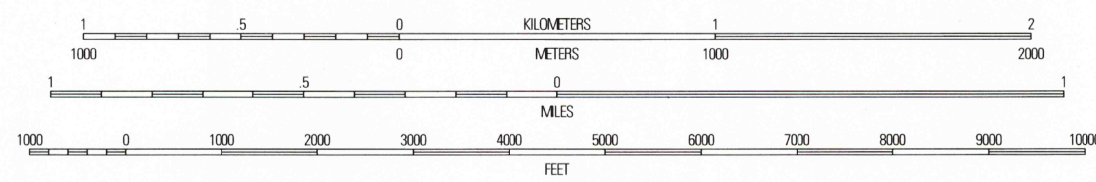
UNITED STATES
DEPARTMENT OF THE INTERIOR
GEOLOGICAL SURVEY

EMDEN QUADRANGLE
ILLINOIS
7.5-MINUTE SERIES (TOPOGRAPHIC)



Produced by the United States Geological Survey
in cooperation with State of Illinois agencies
Compiled by photogrammetric methods from imagery dated 1973
Field checked 1976. Revised from imagery dated 1994 and
other sources. Field checked 1996. Map edited 1997
North American Datum of 1983 (NAD 83). Projection and
1000-meter grid: Universal Transverse Mercator, zone 16
10 000-foot ticks: Illinois Coordinate System of 1983 (west zone)
North American Datum of 1927 (NAD 27) is shown by dashed
corner ticks. The values of the shift between NAD 83 and NAD 27
for 7.5-minute intersections are obtainable from National Geodetic
Survey NADCON software

UTM GRID AND 1997 MAGNETIC NORTH
DECLINATION AT CENTER OF SHEET



CONTOUR INTERVAL 5 FEET
NATIONAL GEODETIC VERTICAL DATUM OF 1929

THIS MAP COMPLES WITH NATIONAL MAP ACCURACY STANDARDS
FOR SALE BY U.S. GEOLOGICAL SURVEY, P.O. BOX 25286, DENVER, COLORADO 80225
AND ILLINOIS GEOLOGICAL SURVEY, CHAMPAIGN, ILLINOIS 61820
A FOLDER DESCRIBING TOPOGRAPHIC MAPS AND SYMBOLS IS AVAILABLE ON REQUEST



QUADRANGLE LOCATION

1	2	3
4	5	6
7	8	9

ADJOINING 7.5 QUADRANGLE NAMES

ROAD CLASSIFICATION
Primary highway
hard surface
Secondary highway
hard surface
Light-duty road, hard or
improved surface
Unimproved road
Interstate Route
U.S. Route
State Route

EMDEN, IL

1996

DMA 3164 IV SW-SERIES U863

