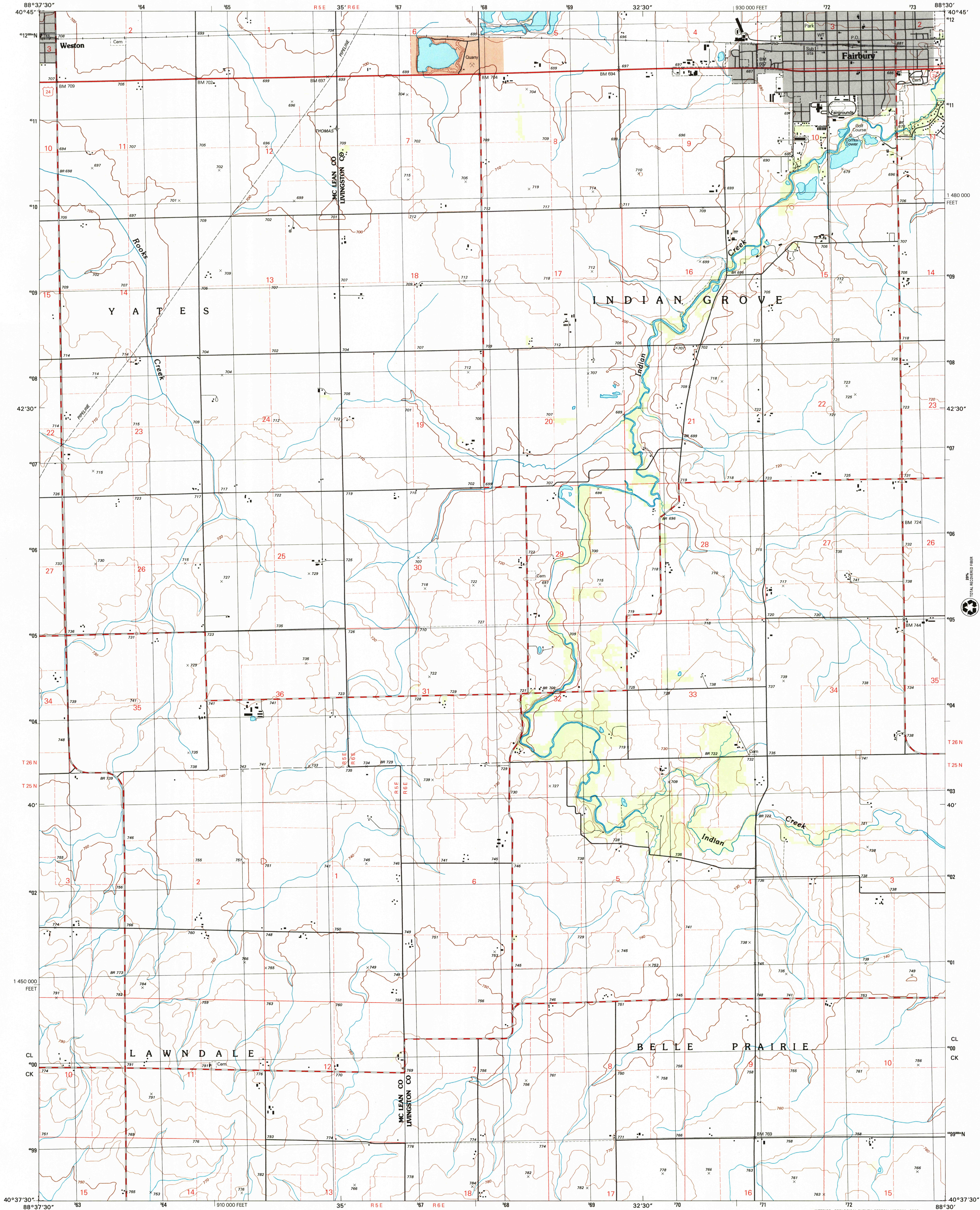


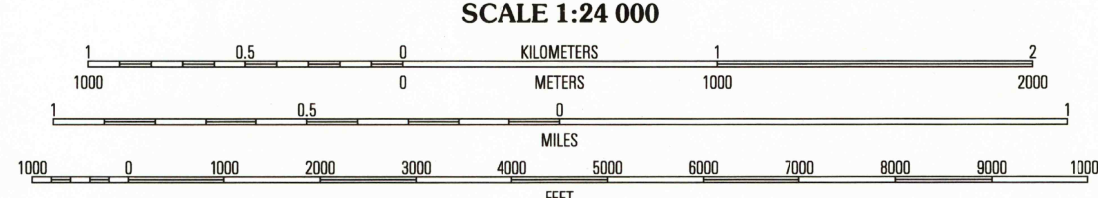
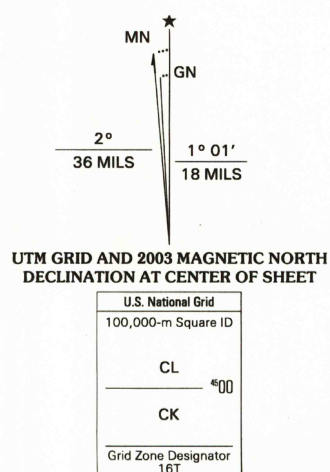


U.S. DEPARTMENT OF THE INTERIOR
U.S. GEOLOGICAL SURVEY

FAIRBURY QUADRANGLE
ILLINOIS
7.5-MINUTE SERIES (TOPOGRAPHIC)



Produced by the United States Geological Survey
Contours.....National elevation Dataset, 1983
Roads.....Illinois Department of Transportation, 2001
Other Planimetry.....2001
Public Land Survey System and Survey Control.....1985
Boundaries.....2002
Woodland.....LANDSAT 7, 2001
Houses of Worship, Schools, and Other Labeled Buildings.....1985
North American Datum of 1983 (NAD 83). Projection and
1 000-meter grid: Universal Transverse Mercator, zone 16T
10 000-foot ticks: Illinois Coordinate System of 1983
(east zone)
North American Datum of 1927 (NAD 27) is shown by dashed
corner ticks. The values of the shift between NAD 83 and
NAD 27 for 7.5-minute intersections are obtainable from
National Geodetic Survey NADCON software



CONTOUR INTERVAL 10 FEET
NORTH AMERICAN VERTICAL DATUM OF 1988
TO CONVERT FROM FEET TO METERS, MULTIPLY BY 0.3048
THIS MAP COMPLIES WITH NATIONAL MAP ACCURACY STANDARDS
FOR SALE BY U.S. GEOLOGICAL SURVEY, P.O. BOX 25286, DENVER, COLORADO 80225
AND ILLINOIS GEOLOGICAL SURVEY, CHAMPAIGN, ILLINOIS 61820
A FOLDER DESCRIBING TOPOGRAPHIC MAPS AND SYMBOLS IS AVAILABLE ON REQUEST



ROAD CLASSIFICATION
Primary highway
Secondary highway
Interstate Route
U.S. Route
State Route
Light-duty road, hard or
improved surface
Unimproved road

1	2	3
4	5	6
7	8	

DEC 03 2003
FAIRBURY, IL
2001
NIMA 3265 II NE-SERIES V863

USGS Library
Reston, VA.
Topo Archive

