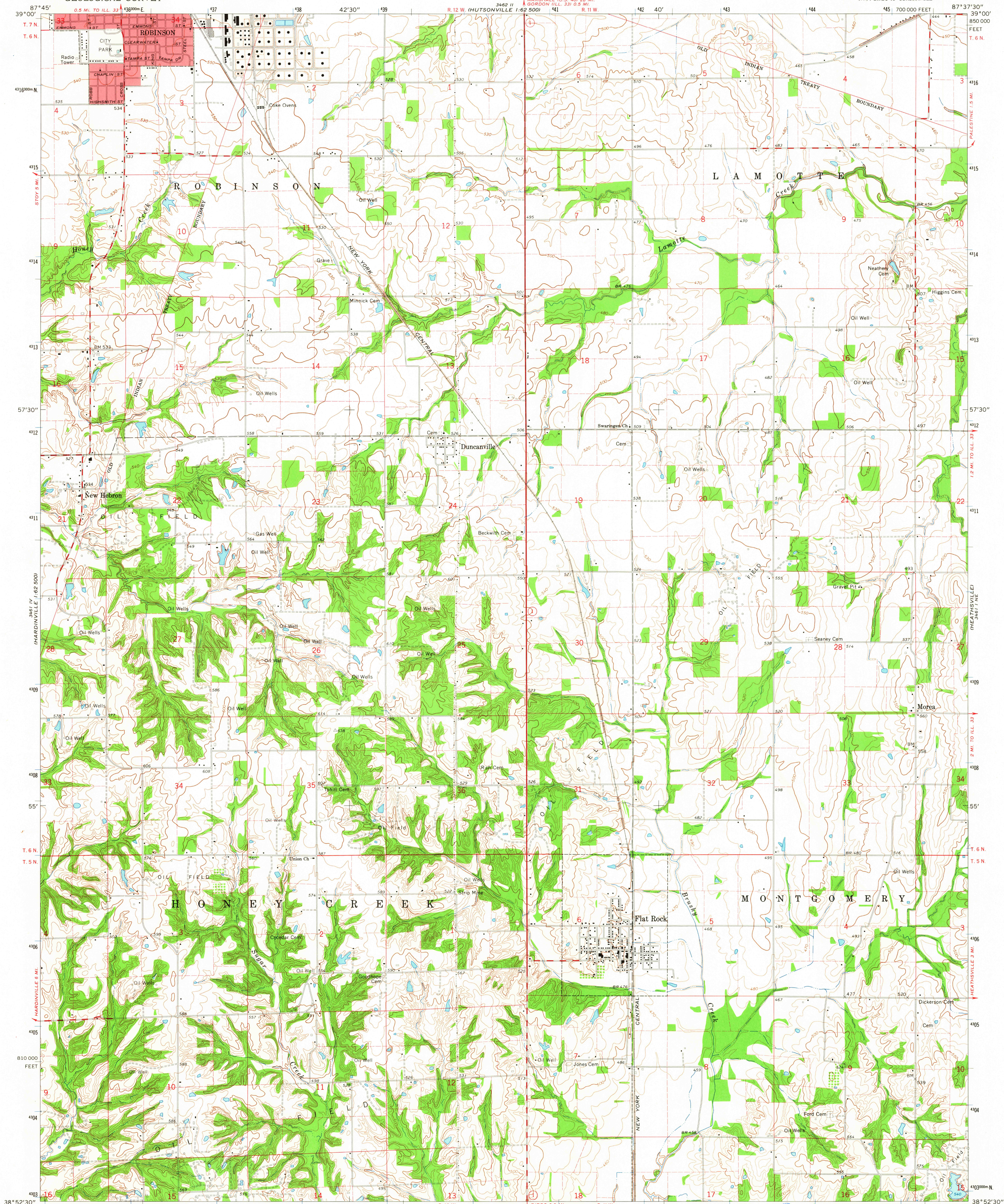


UNITED STATES
DEPARTMENT OF THE INTERIOR
GEOLOGICAL SURVEY

FLAT ROCK QUADRANGLE
ILLINOIS—CRAWFORD CO.
7.5 MINUTE SERIES (TOPOGRAPHIC)
NW/4 BIRDS 15' QUADRANGLE

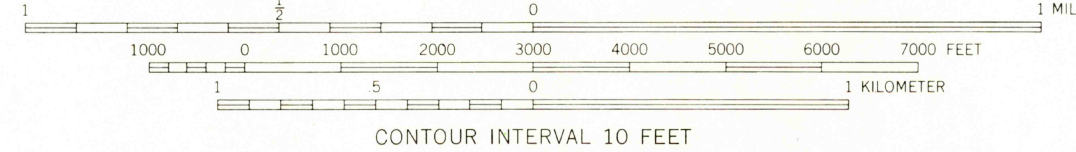
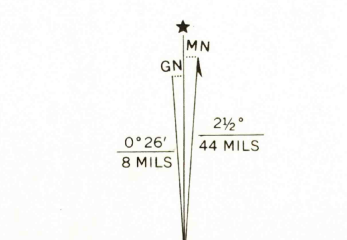


Mapped, edited, and published by the Geological Survey
Control by USGS and USC&GS

Topography by photogrammetric methods from aerial
photographs taken 1963. Field checked 1964

Polyconic projection. 1927 North American datum
10,000-foot grid based on Illinois coordinate system, east zone
1000-meter Universal Transverse Mercator grid ticks,
zone 16, shown in blue

Red tint indicates area in which only landmark buildings are shown
Fine red dashed lines indicate selected fence and field lines where
generally visible on aerial photographs. This information is unchecked



THIS MAP COMPLIES WITH NATIONAL MAP ACCURACY STANDARDS
FOR SALE BY U.S. GEOLOGICAL SURVEY, WASHINGTON, D.C. 20242
AND BY THE STATE GEOLOGICAL SURVEY, URBANA, ILLINOIS
A FOLDER DESCRIBING TOPOGRAPHIC MAPS AND SYMBOLS IS AVAILABLE ON REQUEST

Historical File
Topographic Division



ROAD CLASSIFICATION
Heavy-duty ——— Light-duty ———
Medium-duty ——— Unimproved dirt ———
State Route ———

U.S.G.S.
FILE COPY
TOPOGRAPHIC DIVISION

FLAT ROCK, ILL.
NW/4 BIRDS 15' QUADRANGLE
N3852.5—W8737.5/7.5

1964
AMS 3461 1 NW—SERIES V863

MAY 2 5 1965

2655