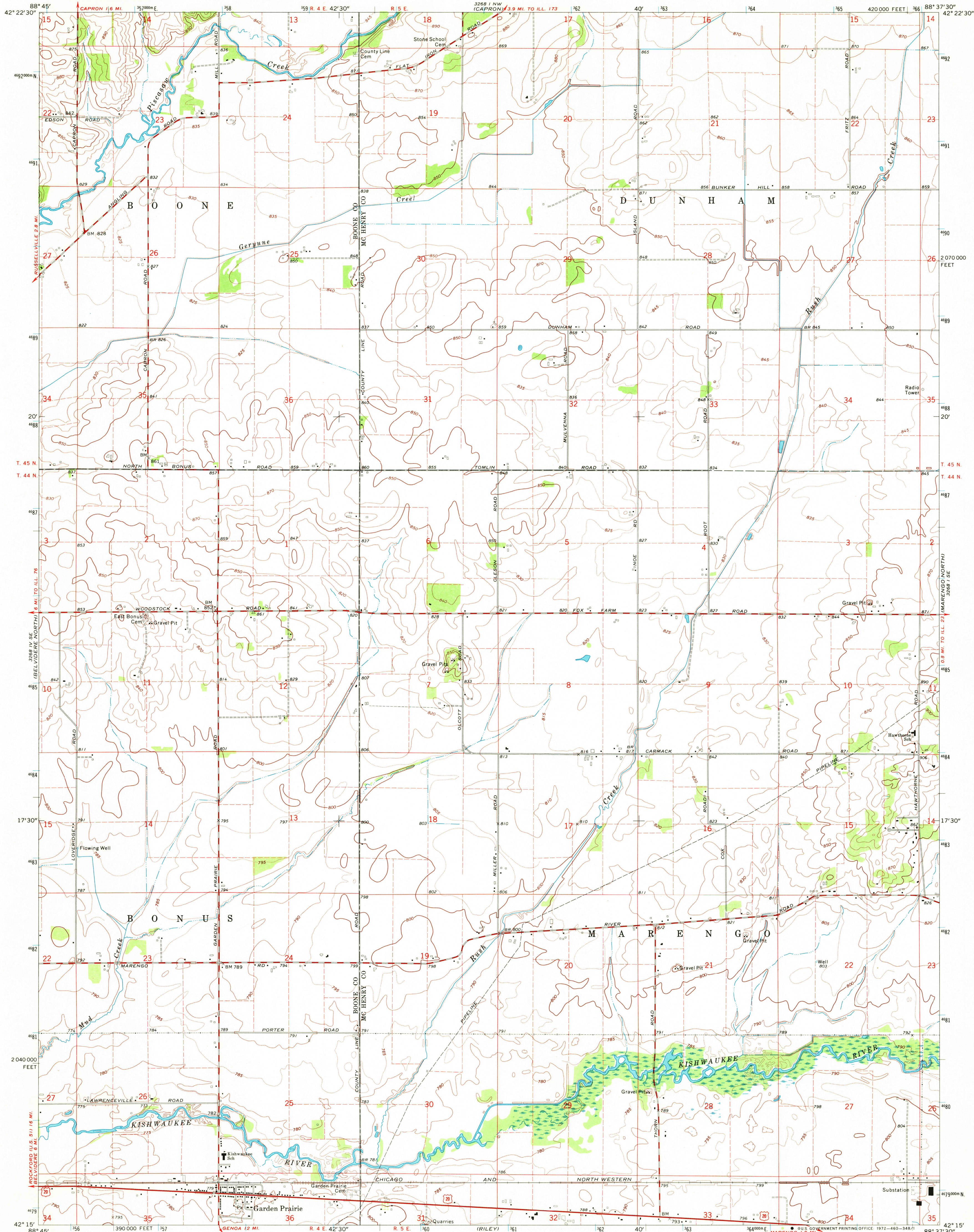


UNITED STATES  
DEPARTMENT OF THE INTERIOR  
GEOLOGICAL SURVEY

GARDEN PRAIRIE QUADRANGLE  
ILLINOIS  
7.5 MINUTE SERIES (TOPOGRAPHIC)



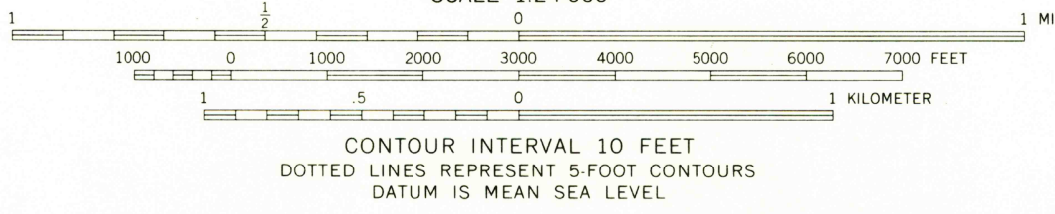
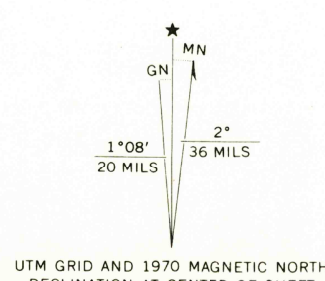
Mapped, edited, and published by the Geological Survey

Control by USGS and USC&GS

Topography by photogrammetric methods from aerial photographs taken 1966. Field checked 1970

Polyconic projection. 1927 North American datum  
10,000-foot grid based on Illinois coordinate system, east zone  
1000-meter Universal Transverse Mercator grid ticks,  
zone 16, shown in blue

Fine red dashed lines indicate selected fence and field lines where  
generally visible on aerial photographs. This information is unchecked



THIS MAP COMPLIES WITH NATIONAL MAP ACCURACY STANDARDS  
FOR SALE BY U.S. GEOLOGICAL SURVEY, WASHINGTON, D.C. 20242  
AND BY THE STATE GEOLOGICAL SURVEY, URBANA, ILLINOIS 61801  
A FOLDER DESCRIBING TOPOGRAPHIC MAPS AND SYMBOLS IS AVAILABLE ON REQUEST

ROAD CLASSIFICATION  
Primary highway, all weather, hard surface  
Secondary highway, all weather, hard surface  
Light-duty road, all weather, improved surface  
Unimproved road, fair or dry weather  
U.S. Route



GARDEN PRAIRIE, ILL.  
SW 1/4 HARVARD 15' QUADRANGLE  
N4215-WB837.5/7.5

1970

AMS 3268 I SW-SERIES V863

USGS  
HISTORICAL FILE  
TOPOGRAPHIC DIVISION

DEC 20 1972